

Datasheet for ABIN6741558  
**anti-LIN28A antibody (N-Term)**[Go to Product page](#)

## 4 Images

## Overview

Quantity:	100 µL
Target:	LIN28A
Binding Specificity:	N-Term
Reactivity:	Human, Pig, Cow, Dog, Sheep
Host:	Rabbit
Clonality:	Polyclonal
Conjugate:	This LIN28A antibody is un-conjugated
Application:	Western Blotting (WB), Immunohistochemistry (IHC), Immunohistochemistry (Paraffin-embedded Sections) (IHC (p))

## Product Details

Brand:	IHC-plus™
Immunogen:	Synthetic peptide from N-Terminus of human LIN28A (Q9H9Z2, NP_078950). Percent identity by BLAST analysis: Human, Chimpanzee, Gorilla, Gibbon, Galago, Marmoset, Panda, Dog, Cat, Bovine, Pig (100%), Rabbit (92%), Monkey, Mouse, Rat, Elephant (90%), Sheep, Guinea pig (85%).  Type of Immunogen: Synthetic peptide
Isotype:	IgG
Specificity:	Human LIN28A / LIN28
Predicted Reactivity:	Percent identity by BLAST analysis: Dog, Bovine, Pig (100%) Rat, Sheep (85%).
Purification:	Immunoaffinity purified

## Target Details

Target:	LIN28A
Alternative Name:	LIN28A / LIN28 ( <a href="#">LIN28A Products</a> )
Background:	Name/Gene ID: LIN28A  Synonyms: LIN28A, CSDD1, Lin-28 homolog (C. elegans), LIN-28, Lin-28A, LIN28, Protein lin-28 homolog A, Lin-28 homolog A (C. elegans), ZCCHC1, RNA-binding protein LIN-28
Gene ID:	79727
NCBI Accession:	<a href="#">NP_078950</a>
UniProt:	<a href="#">Q9H9Z2</a>
Pathways:	<a href="#">Stem Cell Maintenance</a>

## Application Details

Application Notes:	Approved: IHC, IHC-P (5 µg/mL), WB (0.2 - 1 µg/mL)  Usage: Immunohistochemistry: This antibody was validated for use in immunohistochemistry on a panel of 21 formalin-fixed, paraffin-embedded (FFPE) human tissues after heat induced antigen retrieval in pH 6.0 citrate buffer. After incubation with the primary antibody, slides were incubated with biotinylated secondary antibody, followed by alkaline phosphatase-streptavidin and chromogen. The stained slides were evaluated by a pathologist to confirm staining specificity. The optimal working concentration for this antibody was determined to be 5 µg/mL. Western Blot: Suggested dilution at 1 µg/mL in 5 % skim milk / PBS buffer, and HRP conjugated anti-Rabbit IgG should be diluted in 1:50000 - 100000 as second antibody. ELISA titer in peptide based assay: 1:62500.
Comment:	Target Species of Antibody: Human
Restrictions:	For Research Use only

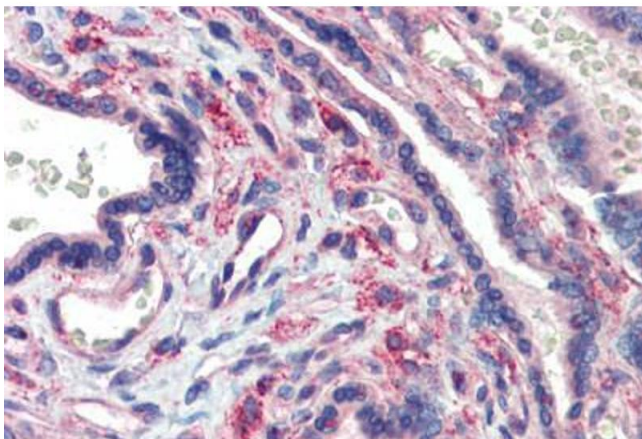
## Handling

Format:	Lyophilized
Reconstitution:	Distilled water
Concentration:	Lot specific
Buffer:	Lyophilized from PBS with 2 % sucrose

## Handling

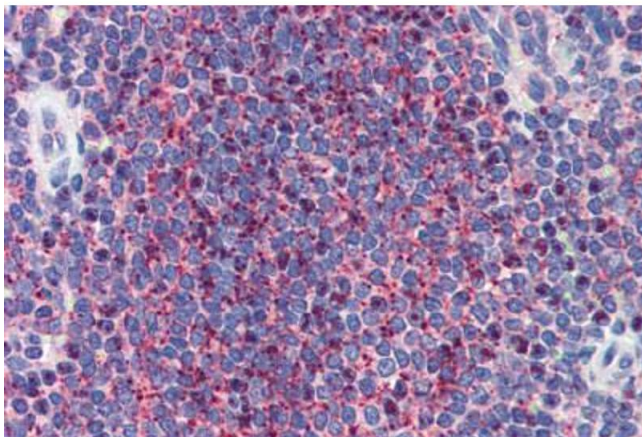
Handling Advice:	Avoid repeat freeze-thaw cycles.
Storage:	4 °C, -20 °C
Storage Comment:	Long term: -20°C, the use of 50% glycerol is recommended if storing aliquots in -20°C for long term use (up to 1 year) Short term (less than 1 week): 4°C. Avoid freeze-thaw cycles.

## Images



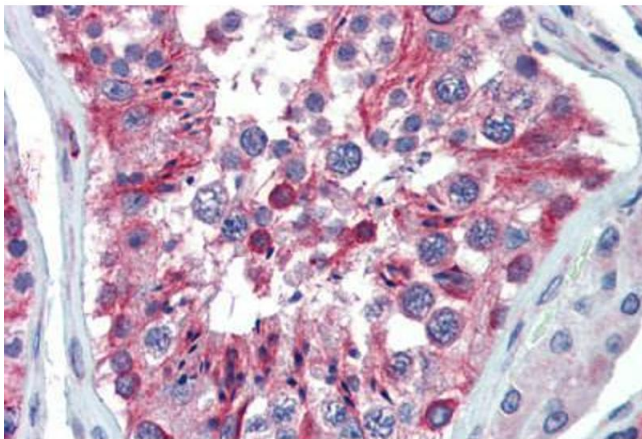
### Immunohistochemistry (Paraffin-embedded Sections)

**Image 1.** Human Placenta (formalin-fixed, paraffin-embedded) stained with LIN28 antibody ABIN462196 followed by biotinylated goat anti-rabbit IgG secondary antibody ABIN481713, alkaline phosphatase-streptavidin and chromogen.



### Immunohistochemistry (Paraffin-embedded Sections)

**Image 2.** Human Spleen (formalin-fixed, paraffin-embedded) stained with LIN28 antibody ABIN462196 followed by biotinylated goat anti-rabbit IgG secondary antibody ABIN481713, alkaline phosphatase-streptavidin and chromogen.



#### Immunohistochemistry (Paraffin-embedded Sections)

**Image 3.** Human Testis (formalin-fixed, paraffin-embedded) stained with LIN28 antibody ABIN462196 followed by biotinylated goat anti-rabbit IgG secondary antibody ABIN481713, alkaline phosphatase-streptavidin and chromogen.

Please check the [product details page](#) for more images. Overall 4 images are available for ABIN6741558.