

Datasheet for ABIN6741560
anti-ZNF165 antibody (AA 216-265)

3 Images

[Go to Product page](#)

Overview

Quantity:	100 µL
Target:	ZNF165
Binding Specificity:	AA 216-265
Reactivity:	Human, Pig, Monkey
Host:	Rabbit
Clonality:	Polyclonal
Conjugate:	This ZNF165 antibody is un-conjugated
Application:	Western Blotting (WB), Immunohistochemistry (IHC), Immunohistochemistry (Paraffin-embedded Sections) (IHC (p))

Product Details

Brand:	IHC-plus™
Immunogen:	Synthetic peptide located between aa216-265 of human ZNF165 (P49910, NP_003438). Percent identity by BLAST analysis: Human, Monkey (100%), Gorilla, Gibbon (92%), Pig (85%). Type of Immunogen: Synthetic peptide
Isotype:	IgG
Specificity:	Human ZNF165
Predicted Reactivity:	Percent identity by BLAST analysis: Human (100%) Pig (85%).
Purification:	Immunoaffinity purified

Target Details

Target:	ZNF165
Alternative Name:	ZNF165 (ZNF165 Products)
Background:	Name/Gene ID: ZNF165 Family: Zinc Finger Synonyms: ZNF165, Cancer/testis antigen 53, CT53, LD65, ZPF165, Zinc finger protein 165, ZSCAN7
Gene ID:	7718
NCBI Accession:	NP_003438
UniProt:	P49910

Application Details

Application Notes:	Approved: IHC, IHC-P (5 µg/mL), WB (0.2 - 1 µg/mL) Usage: Immunohistochemistry: This antibody was validated for use in immunohistochemistry on a panel of 21 formalin-fixed, paraffin-embedded (FFPE) human tissues after heat induced antigen retrieval in pH 6.0 citrate buffer. After incubation with the primary antibody, slides were incubated with biotinylated secondary antibody, followed by alkaline phosphatase-streptavidin and chromogen. The stained slides were evaluated by a pathologist to confirm staining specificity. The optimal working concentration for this antibody was determined to be 5 µg/mL. Western Blot: Suggested dilution at 1 µg/mL in 5 % skim milk / PBS buffer, and HRP conjugated anti-Rabbit IgG should be diluted in 1:50000 - 100000 as second antibody. ELISA titer in peptide based assay: 1:12500.
Comment:	Target Species of Antibody: Human
Restrictions:	For Research Use only

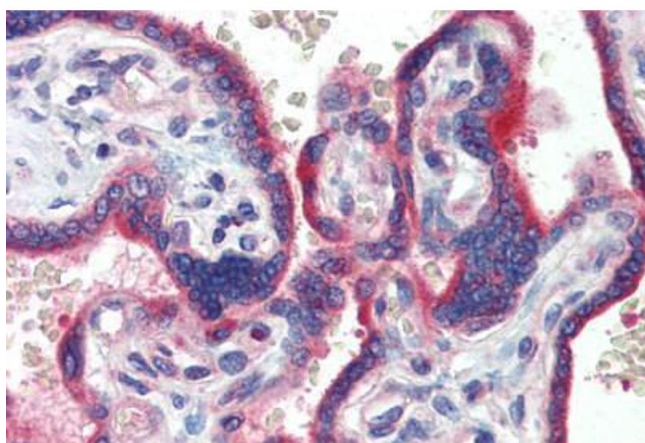
Handling

Format:	Lyophilized
Reconstitution:	Distilled water
Concentration:	Lot specific
Buffer:	Lyophilized from PBS with 2 % sucrose

Handling

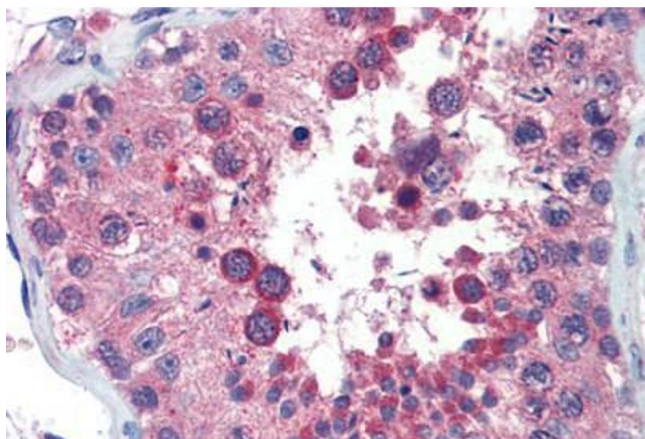
Handling Advice:	Avoid repeat freeze-thaw cycles.
Storage:	4 °C,-20 °C
Storage Comment:	Long term: -20°C, the use of 50% glycerol is recommended if storing aliquots in -20°C for long term use (up to 1 year) Short term (less than 1 week): 4°C. Avoid freeze-thaw cycles.

Images



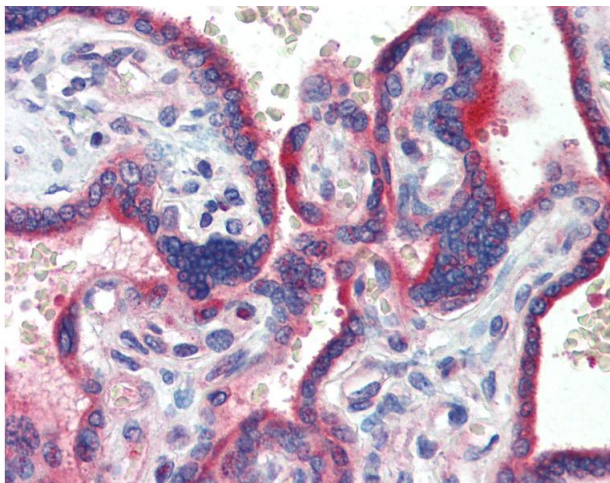
Immunohistochemistry (Paraffin-embedded Sections)

Image 1. Human Placenta (formalin-fixed, paraffin-embedded) stained with ZNF165 antibody ABIN462198 followed by biotinylated goat anti-rabbit IgG secondary antibody ABIN481713, alkaline phosphatase-streptavidin and chromogen.



Immunohistochemistry (Paraffin-embedded Sections)

Image 2. Human Testis (formalin-fixed, paraffin-embedded) stained with ZNF165 antibody ABIN462198 followed by biotinylated goat anti-rabbit IgG secondary antibody ABIN481713, alkaline phosphatase-streptavidin and chromogen.



Immunohistochemistry

Image 3. Anti-ZNF165 antibody IHC of human placenta. Immunohistochemistry of formalin-fixed, paraffin-embedded tissue after heat-induced antigen retrieval. Antibody concentration 5 ug/ml. This image was taken for the unconjugated form of this product. Other ...