

Datasheet for ABIN6741564
anti-NR1I2 antibody (AA 108-157)

2 Images

[Go to Product page](#)

Overview

Quantity:	100 µL
Target:	NR1I2
Binding Specificity:	AA 108-157
Reactivity:	Human
Host:	Rabbit
Clonality:	Polyclonal
Conjugate:	This NR1I2 antibody is un-conjugated
Application:	Western Blotting (WB), Immunohistochemistry (IHC), Immunohistochemistry (Paraffin-embedded Sections) (IHC (p))

Product Details

Brand:	IHC-plus™
Immunogen:	Synthetic peptide located between aa108-157 of human NR1I2 (O75469, NP_003880). Percent identity by BLAST analysis: Human, Gorilla (100%), Gibbon, Monkey (85%). Type of Immunogen: Synthetic peptide
Isotype:	IgG
Specificity:	Human NR1I2 / PXR
Predicted Reactivity:	Percent identity by BLAST analysis: Human (100%).
Purification:	Immunoaffinity purified

Target Details

Target:	NR1I2
Alternative Name:	NR1I2 / PXR / PAR (NR1I2 Products)
Background:	Name/Gene ID: NR1I2 Subfamily: NR1 Thyroid hormone-like Family: NHR Synonyms: NR1I2, BXR, Orphan nuclear receptor PXR, Orphan nuclear receptor PAR1, PARq, PRR, PXR, Pregnane X receptor, ONR1, SAR, SXR
Gene ID:	8856
NCBI Accession:	NP_003880
UniProt:	O75469
Pathways:	Nuclear Receptor Transcription Pathway , Steroid Hormone Mediated Signaling Pathway

Application Details

Application Notes:	Approved: IHC, IHC-P (5 µg/mL), WB (0.2 - 1 µg/mL) Usage: Immunohistochemistry: This antibody was validated for use in immunohistochemistry on a panel of 21 formalin-fixed, paraffin-embedded (FFPE) human tissues after heat induced antigen retrieval in pH 6.0 citrate buffer. After incubation with the primary antibody, slides were incubated with biotinylated secondary antibody, followed by alkaline phosphatase-streptavidin and chromogen. The stained slides were evaluated by a pathologist to confirm staining specificity. The optimal working concentration for this antibody was determined to be 5 µg/mL. Western Blot: Suggested dilution at 1 µg/mL in 5 % skim milk / PBS buffer, and HRP conjugated anti-Rabbit IgG should be diluted in 1:50000 - 100000 as second antibody. ELISA titer in peptide based assay: 1:1562500.
Comment:	Target Species of Antibody: Human
Restrictions:	For Research Use only

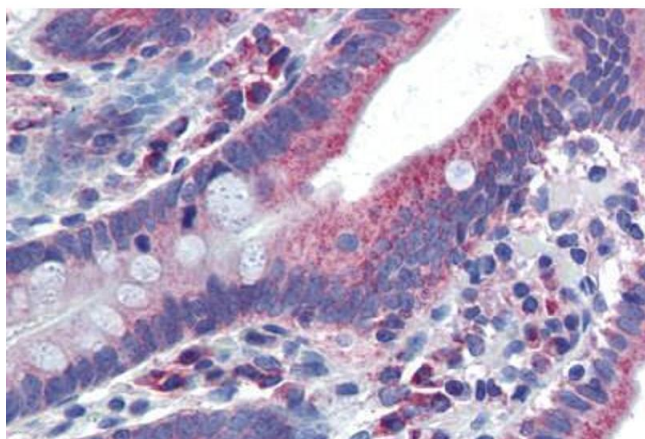
Handling

Format:	Lyophilized
Reconstitution:	Distilled water

Handling

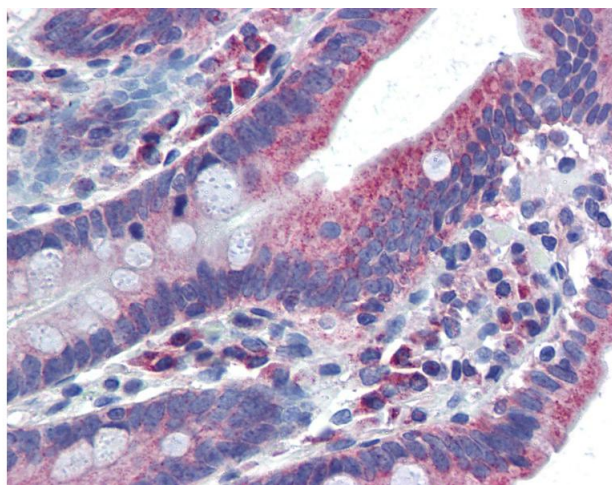
Concentration:	Lot specific
Buffer:	Lyophilized from PBS with 2 % sucrose
Handling Advice:	Avoid repeat freeze-thaw cycles.
Storage:	4 °C,-20 °C
Storage Comment:	Long term: -20°C, the use of 50% glycerol is recommended if storing aliquots in -20°C for long term use (up to 1 year) Short term (less than 1 week): 4°C. Avoid freeze-thaw cycles.

Images



Immunohistochemistry (Paraffin-embedded Sections)

Image 1. Human Small Intestine (formalin-fixed, paraffin-embedded) stained with NR1I2 antibody ABIN462202 followed by biotinylated goat anti-rabbit IgG secondary antibody ABIN481713, alkaline phosphatase-streptavidin and chromogen.



Immunohistochemistry

Image 2. Anti-PXR antibody IHC of human small intestine. Immunohistochemistry of formalin-fixed, paraffin-embedded tissue after heat-induced antigen retrieval. Antibody concentration 5 ug/ml. This image was taken for the unconjugated form of this product. Ot ...