



[Go to Product page](#)

Datasheet for ABIN6741569

## anti-TEAD4 antibody (C-Term)

### 3 Images

#### Overview

Quantity:	100 µL
Target:	TEAD4
Binding Specificity:	C-Term
Reactivity:	Human, Mouse, Rat, Guinea Pig, Rabbit, Horse, Cow, Dog, Pig, Bat
Host:	Rabbit
Clonality:	Polyclonal
Conjugate:	This TEAD4 antibody is un-conjugated
Application:	Western Blotting (WB), Immunohistochemistry (IHC), Immunohistochemistry (Paraffin-embedded Sections) (IHC (p))

#### Product Details

Brand:	IHC-plus™
Immunogen:	Synthetic peptide from C-Terminus of human TEAD4 (Q96BK2, NP_003204). Percent identity by BLAST analysis: Human, Chimpanzee, Gorilla, Gibbon, Monkey, Galago, Mouse, Rat, Elephant, Panda, Dog, Bovine, Bat, Rabbit, Horse, Pig, Opossum, Guinea pig (100%), Marmoset, Turkey, Zebra finch, Chicken, Platypus, Xenopus, Stickleback, Zebrafish (92%), Lizard (85%).  Type of Immunogen: Synthetic peptide
Isotype:	IgG
Specificity:	Human TEAD4
Predicted Reactivity:	Percent identity by BLAST analysis: Human, Mouse, Dog, Bovine, Rabbit, Horse, Pig, Guinea pig

## Product Details

---

(100%) Chicken, Xenopus (92%).

Purification: Immunoaffinity purified

## Target Details

---

Target: TEAD4

Alternative Name: TEAD4 ([TEAD4 Products](#))

Background: Name/Gene ID: TEAD4

Synonyms: TEAD4, EFTR-2, HRTEF-1B, RTEF1, RTEF-1, TCF13L1, TEF-3, TEAD-4, TEF3, Transcription factor 13-like 1, Transcription factor RTEF-1, TEFR-1, TEA domain family member 4

Gene ID: 7004

NCBI Accession: [NP\\_003204](#)

UniProt: [Q15561](#)

Pathways: [Regulation of Lipid Metabolism by PPARalpha](#)

## Application Details

---

Application Notes: Approved: IHC, IHC-P (5 µg/mL), WB (0.2 - 1 µg/mL)

Usage: Immunohistochemistry: This antibody was validated for use in immunohistochemistry on a panel of 21 formalin-fixed, paraffin-embedded (FFPE) human tissues after heat induced antigen retrieval in pH 6.0 citrate buffer. After incubation with the primary antibody, slides were incubated with biotinylated secondary antibody, followed by alkaline phosphatase-streptavidin and chromogen. The stained slides were evaluated by a pathologist to confirm staining specificity. The optimal working concentration for this antibody was determined to be 5 µg/mL.

Comment: Target Species of Antibody: Human

Restrictions: For Research Use only

## Handling

---

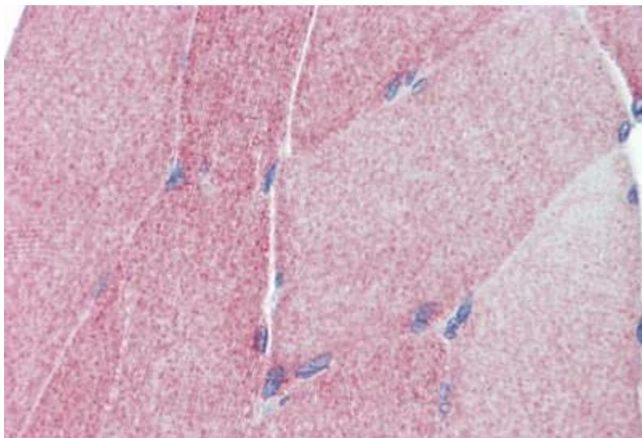
Format: Lyophilized

Reconstitution: After adding water, will consist of PBS buffer with 2 % sucrose

## Handling

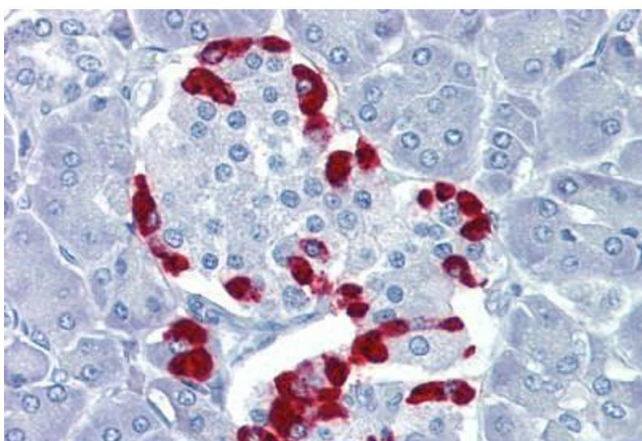
Concentration:	Lot specific
Buffer:	Lyophilized from PBS with 2 % sucrose
Handling Advice:	Avoid repeat freeze-thaw cycles.
Storage:	4 °C,-20 °C
Storage Comment:	Long term: -20°C, the use of 50% glycerol is recommended if storing aliquots in -20°C for long term use (up to 1 year) Short term (less than 1 week): 4°C. Avoid freeze-thaw cycles.

## Images



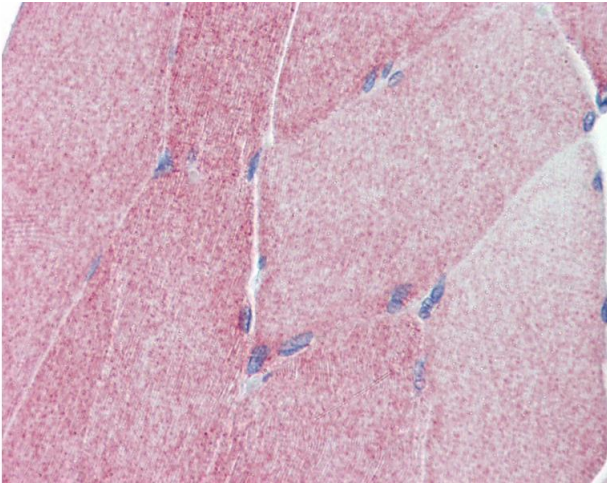
### Immunohistochemistry (Paraffin-embedded Sections)

**Image 1.** Human Skeletal Muscle (formalin-fixed, paraffin-embedded) stained with TEAD4 antibody ABIN462208 followed by biotinylated goat anti-rabbit IgG secondary antibody ABIN481713, alkaline phosphatase-streptavidin and chromogen.



### Immunohistochemistry (Paraffin-embedded Sections)

**Image 2.** Human Pancreas (formalin-fixed, paraffin-embedded) stained with TEAD4 antibody ABIN462208 followed by biotinylated goat anti-rabbit IgG secondary antibody ABIN481713, alkaline phosphatase-streptavidin and chromogen.



### Immunohistochemistry

**Image 3.** Anti-TEAD4 antibody IHC of human skeletal muscle. Immunohistochemistry of formalin-fixed, paraffin-embedded tissue after heat-induced antigen retrieval. Antibody concentration 5 ug/ml. This image was taken for the unconjugated form of this product. ...