



[Go to Product page](#)

Datasheet for ABIN6741572
anti-ONECUT1 antibody (C-Term)

3 Images

Overview

Quantity:	100 µL
Target:	ONECUT1
Binding Specificity:	C-Term
Reactivity:	Human, Rat, Dog, Rabbit, Pig, Horse, Zebrafish (Danio rerio), Bat, Monkey
Host:	Rabbit
Clonality:	Polyclonal
Conjugate:	This ONECUT1 antibody is un-conjugated
Application:	Western Blotting (WB), Immunohistochemistry (IHC), Immunohistochemistry (Paraffin-embedded Sections) (IHC (p))

Product Details

Brand:	IHC-plus™
Immunogen:	Synthetic peptide from C-Terminus of human ONECUT1 (Q9UBC0, NP_004489). Percent identity by BLAST analysis: Human, Chimpanzee, Gorilla, Gibbon, Monkey, Galago, Marmoset, Rat, Elephant, Dog, Bat, Rabbit, Horse, Pig, Zebra finch (100%), Bovine (92%), Mouse, Opossum (85%). Type of Immunogen: Synthetic peptide
Isotype:	IgG
Specificity:	Human ONECUT1
Predicted Reactivity:	Percent identity by BLAST analysis: Human, Rat, Dog, Rabbit, Pig (100%) Bovine (92%).

Product Details

Purification: Immunoaffinity purified

Target Details

Target: ONECUT1

Alternative Name: ONECUT1 / HNF6 ([ONECUT1 Products](#))

Background: Name/Gene ID: ONECUT1

Synonyms: ONECUT1, Hepatocyte nuclear factor 6, HNF6, One cut domain family member 1, One cut homeobox 1, HNF-6, HNF6A

Gene ID: 3175

NCBI Accession: [NP_004489](#)

UniProt: [Q9UBC0](#)

Application Details

Application Notes: Approved: IHC, IHC-P (5 µg/mL), WB (0.2 - 1 µg/mL)

Usage: Immunohistochemistry: This antibody was validated for use in immunohistochemistry on a panel of 21 formalin-fixed, paraffin-embedded (FFPE) human tissues after heat induced antigen retrieval in pH 6.0 citrate buffer. After incubation with the primary antibody, slides were incubated with biotinylated secondary antibody, followed by alkaline phosphatase-streptavidin and chromogen. The stained slides were evaluated by a pathologist to confirm staining specificity. The optimal working concentration for this antibody was determined to be 5 µg/mL. Western Blot: Suggested dilution at 1 µg/mL in 5 % skim milk / PBS buffer, and HRP conjugated anti-Rabbit IgG should be diluted in 1:50000 - 100000 as second antibody. ELISA titer in peptide based assay: 1:312500.

Comment: Target Species of Antibody: Human

Restrictions: For Research Use only

Handling

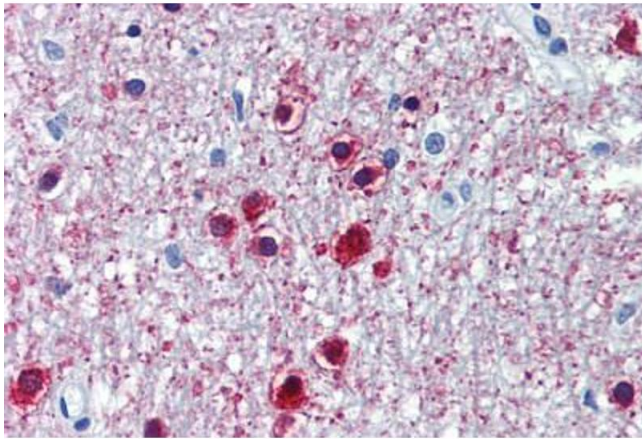
Format: Lyophilized

Reconstitution: Distilled water

Handling

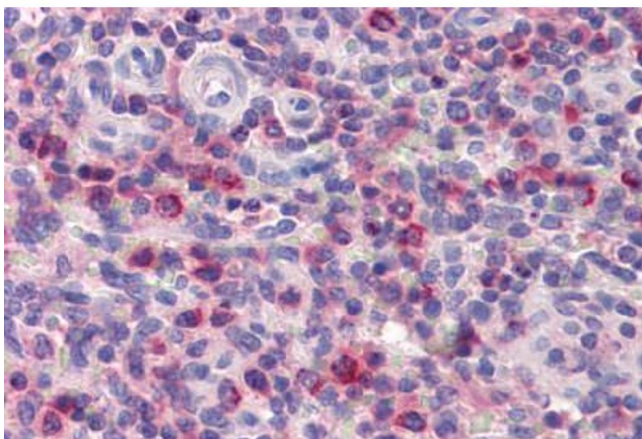
Concentration:	Lot specific
Buffer:	Lyophilized from PBS with 2 % sucrose
Handling Advice:	Avoid repeat freeze-thaw cycles.
Storage:	4 °C,-20 °C
Storage Comment:	Long term: -20°C, the use of 50% glycerol is recommended if storing aliquots in -20°C for long term use (up to 1 year) Short term (less than 1 week): 4°C. Avoid freeze-thaw cycles.

Images



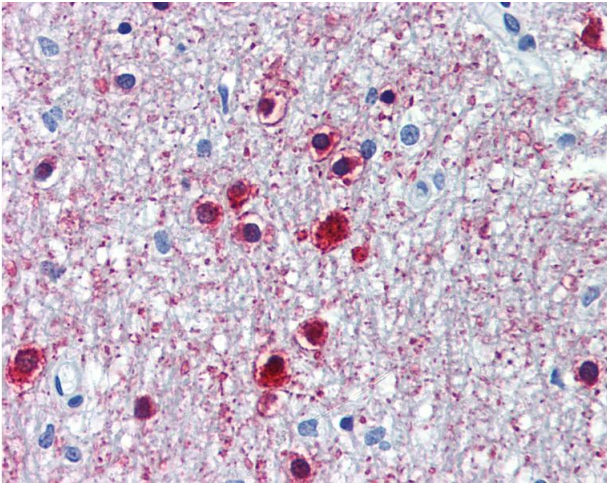
Immunohistochemistry (Paraffin-embedded Sections)

Image 1. Human Brain, Cerebellum (formalin-fixed, paraffin-embedded) stained with ONECUT1 antibody ABIN462211 followed by biotinylated goat anti-rabbit IgG secondary antibody ABIN481713, alkaline phosphatase-streptavidin and chromogen.



Immunohistochemistry (Paraffin-embedded Sections)

Image 2. Human Spleen (formalin-fixed, paraffin-embedded) stained with ONECUT1 antibody ABIN462211 followed by biotinylated goat anti-rabbit IgG secondary antibody ABIN481713, alkaline phosphatase-streptavidin and chromogen.



Immunohistochemistry

Image 3. Anti-ONECUT1 antibody IHC of human brain, cerebellum. Immunohistochemistry of formalin-fixed, paraffin-embedded tissue after heat-induced antigen retrieval. Antibody concentration 5 ug/ml. This image was taken for the unconjugated form of this produ ...