

Datasheet for ABIN6741579
anti-TRIM68 antibody (AA 395-444)

3 Images

[Go to Product page](#)

Overview

Quantity:	100 µL
Target:	TRIM68
Binding Specificity:	AA 395-444
Reactivity:	Human, Mouse, Cow, Horse, Pig, Dog, Monkey
Host:	Rabbit
Clonality:	Polyclonal
Conjugate:	This TRIM68 antibody is un-conjugated
Application:	Western Blotting (WB), Immunohistochemistry (IHC), Immunohistochemistry (Paraffin-embedded Sections) (IHC (p))

Product Details

Brand:	IHC-plus™
Immunogen:	Synthetic peptide located between aa395-444 of human TRIM68 (Q6AZZ1, NP_060543). Percent identity by BLAST analysis: Human, Gorilla, Gibbon, Monkey, Marmoset, Mouse, Elephant, Panda, Dog, Bovine, Horse, Pig (100%), Galago, Bat (92%), Opossum (84%), Turkey, Chicken (80%), Rat (78%). Type of Immunogen: Synthetic peptide
Isotype:	IgG
Specificity:	Human TRIM68
Predicted Reactivity:	Percent identity by BLAST analysis: Human, Mouse, Dog, Bovine, Horse, Pig (100%).

Product Details

Purification: Immunoaffinity purified

Target Details

Target: TRIM68

Alternative Name: TRIM68 ([TRIM68 Products](#))

Background: Name/Gene ID: TRIM68
Family: Tripartite Motif

Synonyms: TRIM68, GC109, RNF137, Ro/SSA1 related protein, SS-56, Tripartite motif containing 68, RING finger protein 137, SS56, Tripartite motif-containing 68, SSA protein SS-56

Gene ID: 55128

NCBI Accession: [NP_060543](#)

UniProt: [Q6AZZ1](#)

Pathways: [Intracellular Steroid Hormone Receptor Signaling Pathway](#), [Regulation of Intracellular Steroid Hormone Receptor Signaling](#)

Application Details

Application Notes: Approved: IHC, IHC-P (5 - 10 µg/mL), WB (0.2 - 1 µg/mL)

Usage: Immunohistochemistry: This antibody was validated for use in immunohistochemistry on a panel of 21 formalin-fixed, paraffin-embedded (FFPE) human tissues after heat induced antigen retrieval in pH 6.0 citrate buffer. After incubation with the primary antibody, slides were incubated with biotinylated secondary antibody, followed by alkaline phosphatase-streptavidin and chromogen. The stained slides were evaluated by a pathologist to confirm staining specificity. The optimal working concentration for this antibody was determined to be 5 µg/mL. Western Blot: Suggested dilution at 1 µg/mL in 5 % skim milk / PBS buffer, and HRP conjugated anti-Rabbit IgG should be diluted in 1:50000 - 100000 as second antibody. ELISA titer in peptide based assay: 1:1562500.

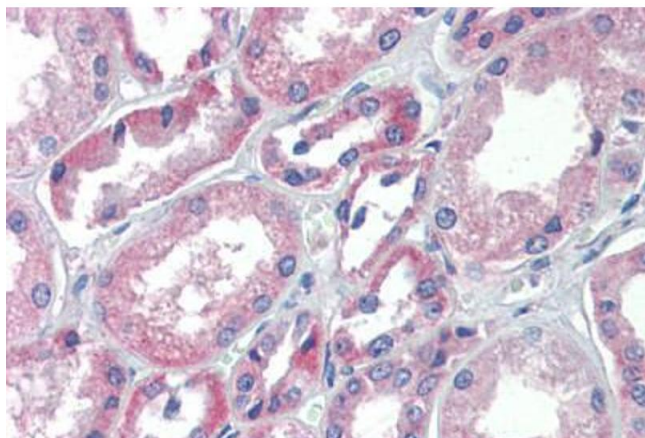
Comment: Target Species of Antibody: Human

Restrictions: For Research Use only

Handling

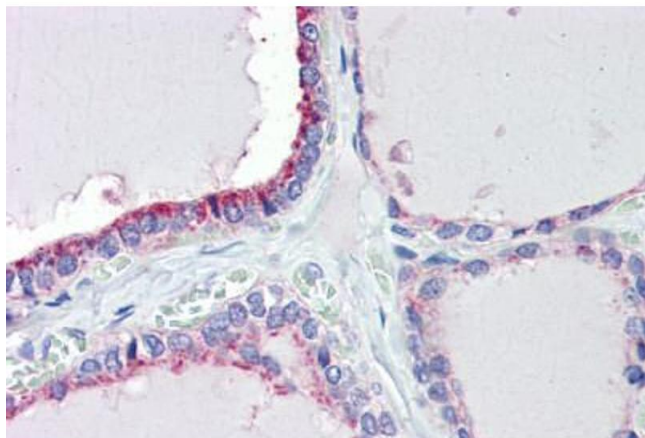
Format:	Lyophilized
Reconstitution:	Reconstitute with 50 µL sterile dH ₂ O.
Concentration:	Lot specific
Buffer:	Lyophilized from PBS with 2 % sucrose
Handling Advice:	Avoid repeat freeze-thaw cycles.
Storage:	4 °C, -20 °C
Storage Comment:	Long term: -20°C, the use of 50% glycerol is recommended if storing aliquots in -20°C for long term use (up to 1 year) Short term (less than 1 week): 4°C. Avoid freeze-thaw cycles.

Images



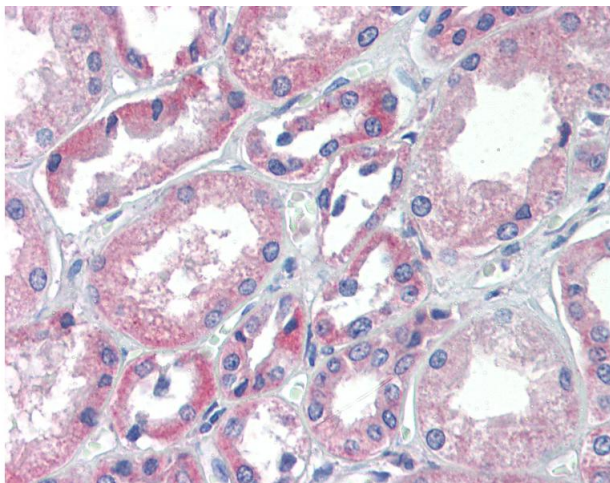
Immunohistochemistry (Paraffin-embedded Sections)

Image 1. Human Kidney (formalin-fixed, paraffin-embedded) stained with TRIM68 antibody ABIN462217 followed by biotinylated goat anti-rabbit IgG secondary antibody ABIN481713, alkaline phosphatase-streptavidin and chromogen.



Immunohistochemistry (Paraffin-embedded Sections)

Image 2. Human Thyroid (formalin-fixed, paraffin-embedded) stained with TRIM68 antibody ABIN462217 followed by biotinylated goat anti-rabbit IgG secondary antibody ABIN481713, alkaline phosphatase-streptavidin and chromogen.



Immunohistochemistry

Image 3. Anti-TRIM68 antibody IHC of human kidney. Immunohistochemistry of formalin-fixed, paraffin-embedded tissue after heat-induced antigen retrieval. Antibody concentration 5 ug/ml. This image was taken for the unconjugated form of this product. Other fo ...