

Datasheet for ABIN6741581  
**anti-BACH2 antibody (C-Term)**

## 3 Images

[Go to Product page](#)

## Overview

Quantity:	100 µL
Target:	BACH2
Binding Specificity:	C-Term
Reactivity:	Human, Rabbit, Monkey
Host:	Rabbit
Clonality:	Polyclonal
Conjugate:	This BACH2 antibody is un-conjugated
Application:	Western Blotting (WB), Immunohistochemistry (IHC), Immunohistochemistry (Paraffin-embedded Sections) (IHC (p))

## Product Details

Brand:	IHC-plus™
Immunogen:	Synthetic peptide from C-Terminus of human BACH2 (Q9BYV9, NP_068585). Percent identity by BLAST analysis: Human, Chimpanzee, Gorilla, Monkey, Marmoset (100%), Gibbon, Mouse, Rat, Horse, Guinea pig (92%), Galago, Elephant, Rabbit (85%).  Type of Immunogen: Synthetic peptide
Isotype:	IgG
Specificity:	Human BACH2
Predicted Reactivity:	Percent identity by BLAST analysis: Human (100%) Mouse, Rat, Horse, Guinea pig (92%) Rabbit (85%).

## Product Details

Purification: Immunoaffinity purified

## Target Details

Target: BACH2

Alternative Name: BACH2 ([BACH2 Products](#))

Background: Name/Gene ID: BACH2

Synonyms: BACH2, BTBD25, BTB and CNC homolog 2

Gene ID: 60468

NCBI Accession: [NP\\_068585](#)

UniProt: [Q9BYV9](#)

## Application Details

Application Notes: Approved: IHC, IHC-P (2.5 - 5 µg/mL), WB (0.2 - 1 µg/mL)

Usage: Immunohistochemistry: This antibody was validated for use in immunohistochemistry on a panel of 21 formalin-fixed, paraffin-embedded (FFPE) human tissues after heat induced antigen retrieval in pH 6.0 citrate buffer. After incubation with the primary antibody, slides were incubated with biotinylated secondary antibody, followed by alkaline phosphatase-streptavidin and chromogen. The stained slides were evaluated by a pathologist to confirm staining specificity. The optimal working concentration for this antibody was determined to be 2.5 µg/mL. Western Blot: Suggested dilution at 1 µg/mL in 5 % skim milk / PBS buffer, and HRP conjugated anti-Rabbit IgG should be diluted in 1:50000 - 100000 as second antibody. ELISA titer in peptide based assay: 1:1562500.

Comment: Target Species of Antibody: Human

Restrictions: For Research Use only

## Handling

Format: Lyophilized

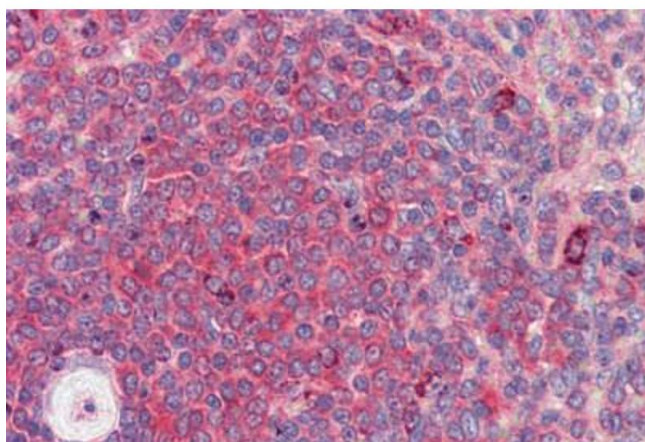
Reconstitution: Distilled water

Concentration: Lot specific

## Handling

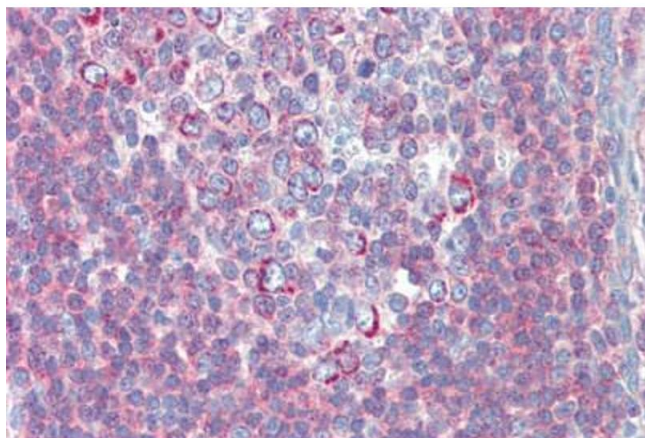
Buffer:	Lyophilized from PBS with 2 % sucrose
Handling Advice:	Avoid repeat freeze-thaw cycles.
Storage:	4 °C, -20 °C
Storage Comment:	Long term: -20°C, the use of 50% glycerol is recommended if storing aliquots in -20°C for long term use (up to 1 year) Short term (less than 1 week): 4°C. Avoid freeze-thaw cycles.

## Images



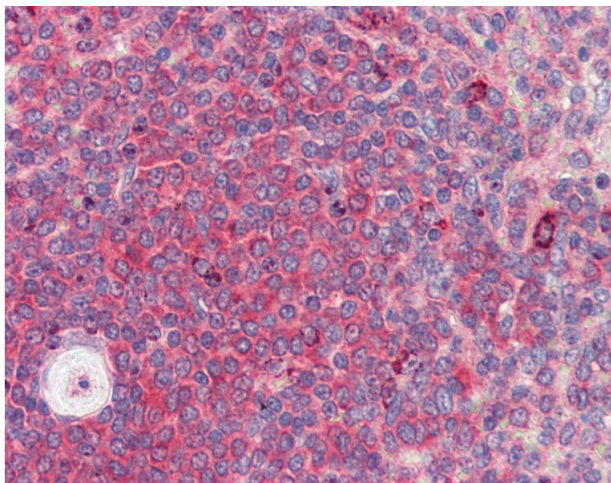
### Immunohistochemistry (Paraffin-embedded Sections)

**Image 1.** Human Spleen (formalin-fixed, paraffin-embedded) stained with BACH2 antibody ABIN462219 followed by biotinylated goat anti-rabbit IgG secondary antibody ABIN481713, alkaline phosphatase-streptavidin and chromogen.



### Immunohistochemistry (Paraffin-embedded Sections)

**Image 2.** Human Tonsil (formalin-fixed, paraffin-embedded) stained with BACH2 antibody ABIN462219 followed by biotinylated goat anti-rabbit IgG secondary antibody ABIN481713, alkaline phosphatase-streptavidin and chromogen.



#### Immunohistochemistry

**Image 3.** Anti-BACH2 antibody IHC of human spleen. Immunohistochemistry of formalin-fixed, paraffin-embedded tissue after heat-induced antigen retrieval. Antibody concentration 2.5 ug/ml. This image was taken for the unconjugated form of this product. Other f ...