



[Go to Product page](#)

Datasheet for ABIN6741584  
**anti-TRIM8 antibody (AA 36-85)**

4 Images

Overview

Quantity:	100 µL
Target:	TRIM8
Binding Specificity:	AA 36-85
Reactivity:	Human, Mouse, Rat, Dog, Cow, Pig, Rabbit, Zebrafish (Danio rerio), Hamster, Monkey
Host:	Rabbit
Clonality:	Polyclonal
Conjugate:	This TRIM8 antibody is un-conjugated
Application:	Western Blotting (WB), Immunohistochemistry (IHC), Immunohistochemistry (Paraffin-embedded Sections) (IHC (p))

Product Details

Brand:	IHC-plus™
Immunogen:	Synthetic peptide located between aa36-85 of human TRIM8 (Q9BZR9, NP_112174). Percent identity by BLAST analysis: Human, Chimpanzee, Gorilla, Gibbon, Monkey, Galago, Marmoset, Mouse, Rat, Hamster, Panda, Dog, Bovine, Rabbit, Pig (100%), Horse, Turkey, Zebra finch, Chicken, Lizard, Xenopus (92%), Opossum (91%).  Type of Immunogen: Synthetic peptide
Isotype:	IgG
Specificity:	Human TRIM8 / GERP
Predicted Reactivity:	Percent identity by BLAST analysis: Human, Mouse, Rat, Dog, Bovine, Rabbit, Pig (100%) Horse,

## Product Details

---

Chicken, Xenopus (92%).

Purification: Immunoaffinity purified

## Target Details

---

Target: TRIM8

Alternative Name: TRIM8 / GERP ([TRIM8 Products](#))

Background: Name/Gene ID: TRIM8  
Family: Tripartite Motif

Synonyms: TRIM8, RING finger protein 27, Tripartite motif-containing 8, Tripartite motif containing 8, GERP, RNF27, Tripartite motif protein TRIM8

Gene ID: 81603

NCBI Accession: [NP\\_112174](#)

UniProt: [Q9BZR9](#)

## Application Details

---

Application Notes: Approved: IHC, IHC-P (5 - 10 µg/mL), WB (0.2 - 1 µg/mL)

Usage: Immunohistochemistry: This antibody was validated for use in immunohistochemistry on a panel of 21 formalin-fixed, paraffin-embedded (FFPE) human tissues after heat induced antigen retrieval in pH 6.0 citrate buffer. After incubation with the primary antibody, slides were incubated with biotinylated secondary antibody, followed by alkaline phosphatase-streptavidin and chromogen. The stained slides were evaluated by a pathologist to confirm staining specificity. The optimal working concentration for this antibody was determined to be 10 µg/mL. Western Blot: Suggested dilution at 1 µg/mL in 5 % skim milk / PBS buffer, and HRP conjugated anti-Rabbit IgG should be diluted in 1:50000 - 100000 as second antibody. ELISA titer in peptide based assay: 1:62500.

Comment: Target Species of Antibody: Human

Restrictions: For Research Use only

## Handling

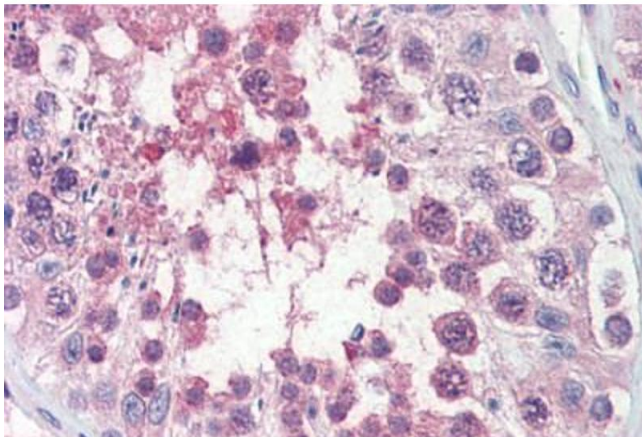
---

Format: Lyophilized

## Handling

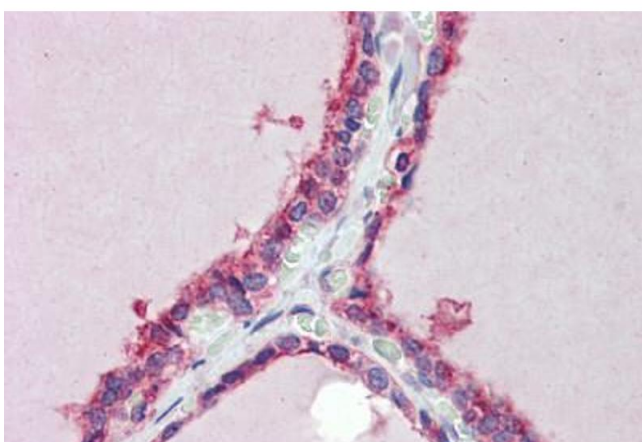
Reconstitution:	Distilled water
Concentration:	Lot specific
Buffer:	Lyophilized from PBS with 2 % sucrose
Handling Advice:	Avoid repeat freeze-thaw cycles.
Storage:	4 °C, -20 °C
Storage Comment:	Long term: -20°C, the use of 50% glycerol is recommended if storing aliquots in -20°C for long term use (up to 1 year) Short term (less than 1 week): 4°C. Avoid freeze-thaw cycles.

## Images



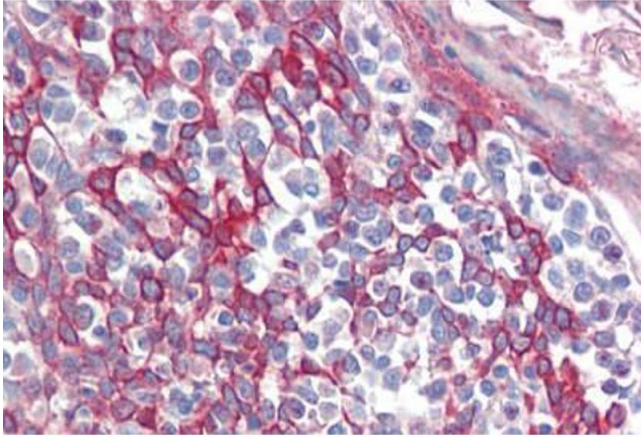
### Immunohistochemistry (Paraffin-embedded Sections)

**Image 1.** Human Testis (formalin-fixed, paraffin-embedded) stained with TRIM8 antibody ABIN462222 followed by biotinylated goat anti-rabbit IgG secondary antibody ABIN481713, alkaline phosphatase-streptavidin and chromogen.



### Immunohistochemistry (Paraffin-embedded Sections)

**Image 2.** Human Thyroid (formalin-fixed, paraffin-embedded) stained with TRIM8 antibody ABIN462222 followed by biotinylated goat anti-rabbit IgG secondary antibody ABIN481713, alkaline phosphatase-streptavidin and chromogen.



### Immunohistochemistry (Paraffin-embedded Sections)

**Image 3.** Human Tonsil (formalin-fixed, paraffin-embedded) stained with TRIM8 antibody ABIN462222 followed by biotinylated goat anti-rabbit IgG secondary antibody ABIN481713, alkaline phosphatase-streptavidin and chromogen.

Please check the [product details page](#) for more images. Overall 4 images are available for ABIN6741584.