



[Go to Product page](#)

Datasheet for ABIN6741586  
**anti-FUS antibody (N-Term)**

3 Images

Overview

Quantity:	100 µL
Target:	FUS
Binding Specificity:	N-Term
Reactivity:	Human, Mouse, Rat, Monkey
Host:	Rabbit
Clonality:	Polyclonal
Conjugate:	This FUS antibody is un-conjugated
Application:	Western Blotting (WB), Immunohistochemistry (IHC), Immunohistochemistry (Paraffin-embedded Sections) (IHC (p))

Product Details

Brand:	IHC-plus™
Immunogen:	Synthetic peptide from N-Terminus of human FUS. Percent identity by BLAST analysis: Human, Gorilla, Gibbon, Marmoset, Mouse, Rat, Elephant, Opossum, Platypus (100%), Dog, Bovine, Rabbit, Pig (92%).  Type of Immunogen: Synthetic peptide
Isotype:	IgG
Specificity:	Human FUS
Predicted Reactivity:	Percent identity by BLAST analysis: Human, Mouse (100%) Rat, Dog, Bovine, Rabbit, Pig (92%).
Purification:	Immunoaffinity purified

## Target Details

---

Target:	FUS
Alternative Name:	FUS / Gadd153 ( <a href="#">FUS Products</a> )
Target Type:	Viral Protein
Background:	Name/Gene ID: FUS  Synonyms: FUS, 75 kDa DNA-pairing protein, ALS6, CHOP, FUS-CHOP, FUS1, Fused in sarcoma, HnRNP-P2, HNRNPP2, Oncogene TLS, RNA-binding protein FUS, TLS, C/EBP-homologous protein, ETM4, Fus-like protein, Oncogene FUS, POMP75
Gene ID:	2521
UniProt:	<a href="#">P35637</a>

## Application Details

---

Application Notes:	Approved: IHC, IHC-P (5 µg/mL), WB (0.2 - 1 µg/mL)  Usage: Immunohistochemistry: This antibody was validated for use in immunohistochemistry on a panel of 21 formalin-fixed, paraffin-embedded (FFPE) human tissues after heat induced antigen retrieval in pH 6.0 citrate buffer. After incubation with the primary antibody, slides were incubated with biotinylated secondary antibody, followed by alkaline phosphatase-streptavidin and chromogen. The stained slides were evaluated by a pathologist to confirm staining specificity. The optimal working concentration for this antibody was determined to be 10 µg/mL.
Comment:	Target Species of Antibody: Human
Restrictions:	For Research Use only

## Handling

---

Format:	Lyophilized
Reconstitution:	After adding water, will consist of PBS buffer with 2 % sucrose
Concentration:	Lot specific
Buffer:	Lyophilized from PBS with 2 % sucrose
Handling Advice:	Avoid repeat freeze-thaw cycles.
Storage:	4 °C, -20 °C

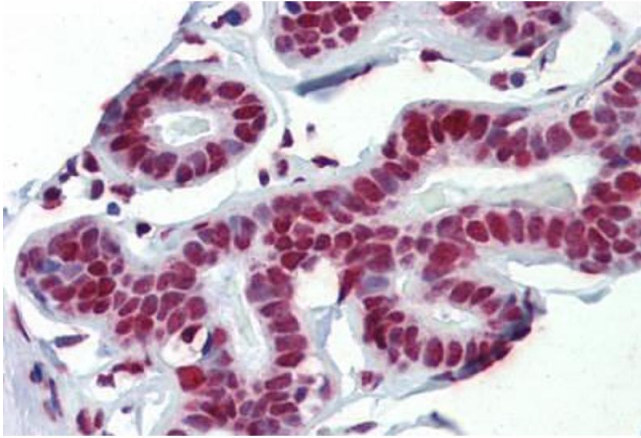
## Handling

### Storage Comment:

Long term: -20°C, the use of 50% glycerol is recommended if storing aliquots in -20°C for long term use (up to 1 year)

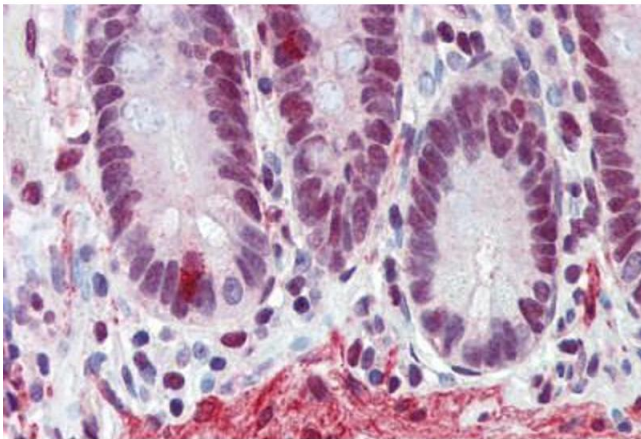
Short term (less than 1 week): 4°C. Avoid freeze-thaw cycles.

## Images



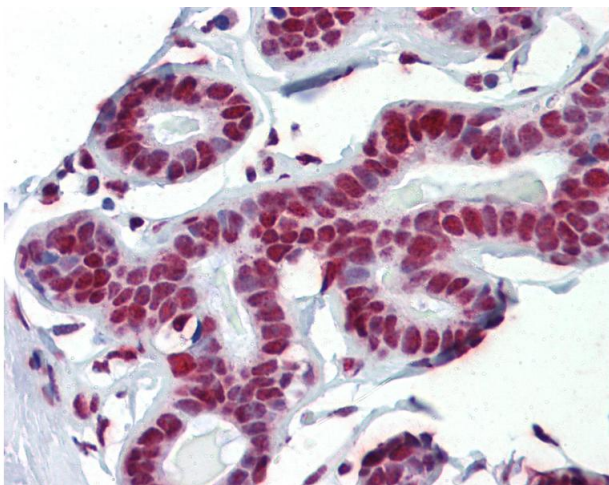
### Immunohistochemistry (Paraffin-embedded Sections)

**Image 1.** Human Breast (formalin-fixed, paraffin-embedded) stained with FUS antibody ABIN462224 followed by biotinylated goat anti-rabbit IgG secondary antibody ABIN481713, alkaline phosphatase-streptavidin and chromogen.



### Immunohistochemistry (Paraffin-embedded Sections)

**Image 2.** Human Small Intestine (formalin-fixed, paraffin-embedded) stained with FUS antibody ABIN462224 followed by biotinylated goat anti-rabbit IgG secondary antibody ABIN481713, alkaline phosphatase-streptavidin and chromogen.



### Immunohistochemistry

**Image 3.** Anti-FUS antibody IHC of human breast. Immunohistochemistry of formalin-fixed, paraffin-embedded tissue after heat-induced antigen retrieval. Antibody concentration 5 ug/ml. This image was taken for the unconjugated form of this product. Other forms ...