

Datasheet for ABIN6741588 anti-SSB antibody (AA 82-131)



[Go to Product page](#)

3 Images

Overview

Quantity:	100 µL
Target:	SSB
Binding Specificity:	AA 82-131
Reactivity:	Human, Mouse, Rat, Dog, Monkey, Horse, Rabbit, Cow, Guinea Pig, Bat, Hamster
Host:	Rabbit
Clonality:	Polyclonal
Conjugate:	This SSB antibody is un-conjugated
Application:	Western Blotting (WB), Immunohistochemistry (IHC), Immunohistochemistry (Paraffin-embedded Sections) (IHC (p))

Product Details

Brand:	IHC-plus™
Immunogen:	Synthetic peptide located between aa82-131 of human SSB (P05455, NP_003133). Percent identity by BLAST analysis: Human, Chimpanzee, Gibbon, Galago, Marmoset, Mouse, Rat, Hamster, Dog, Bovine, Bat, Rabbit, Horse, Guinea pig (100%), Pig, Opossum, Platypus (92%). Type of Immunogen: Synthetic peptide
Isotype:	IgG
Specificity:	Human SSB
Predicted Reactivity:	Percent identity by BLAST analysis: Human, Mouse, Rat, Dog, Horse (100%) Pig (92%).
Purification:	Immunoaffinity purified

Target Details

Target:	SSB
Alternative Name:	SSB / La (SSB Products)
Background:	Name/Gene ID: SSB Synonyms: SSB, Autoantigen La, La, La ribonucleoprotein, Lupus La antigen, SS-B, SS-B/La protein, La autoantigen, LARP3, Lupus La protein
Gene ID:	6741
NCBI Accession:	NP_003133
UniProt:	P05455

Application Details

Application Notes:	Approved: IHC, IHC-P (5 µg/mL), WB (0.25 µg/mL) Usage: Immunohistochemistry: This antibody was validated for use in immunohistochemistry on a panel of 21 formalin-fixed, paraffin-embedded (FFPE) human tissues after heat induced antigen retrieval in pH 6.0 citrate buffer. After incubation with the primary antibody, slides were incubated with biotinylated secondary antibody, followed by alkaline phosphatase-streptavidin and chromogen. The stained slides were evaluated by a pathologist to confirm staining specificity. The optimal working concentration for this antibody was determined to be 5 µg/mL.
Comment:	Target Species of Antibody: Human
Restrictions:	For Research Use only

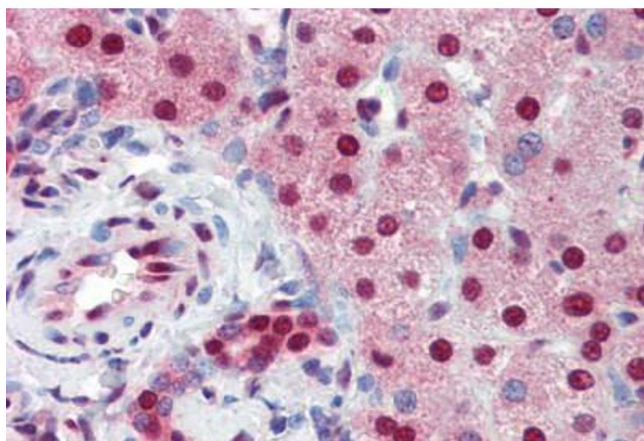
Handling

Format:	Lyophilized
Reconstitution:	ddH2O
Concentration:	Lot specific
Buffer:	Lyophilized from PBS with 2 % sucrose
Handling Advice:	Avoid repeat freeze-thaw cycles.
Storage:	4 °C, -20 °C
Storage Comment:	Long term: -20°C, the use of 50% glycerol is recommended if storing aliquots in -20°C for long

term use (up to 1 year)

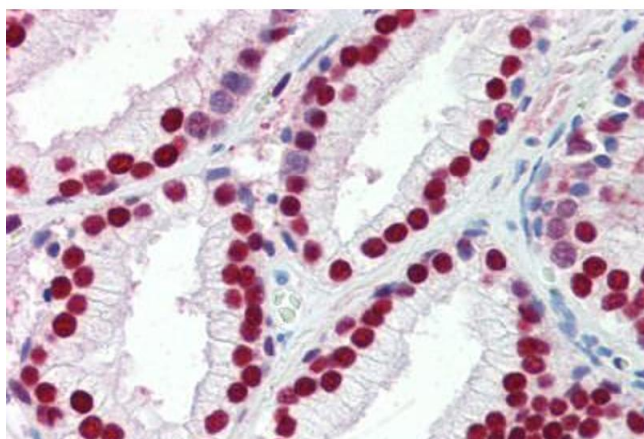
Short term (less than 1 week): 4°C. Avoid freeze-thaw cycles.

Images



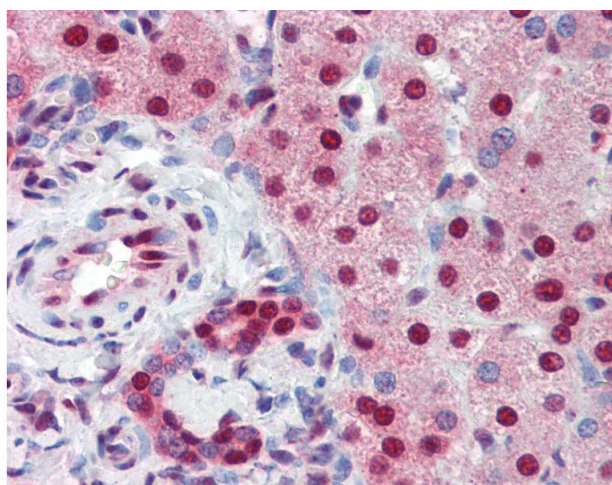
Immunohistochemistry (Paraffin-embedded Sections)

Image 1. Human Liver (formalin-fixed, paraffin-embedded) stained with SSB antibody ABIN462226 followed by biotinylated goat anti-rabbit IgG secondary antibody ABIN481713, alkaline phosphatase-streptavidin and chromogen.



Immunohistochemistry (Paraffin-embedded Sections)

Image 2. Human Prostate (formalin-fixed, paraffin-embedded) stained with SSB antibody ABIN462226 followed by biotinylated goat anti-rabbit IgG secondary antibody ABIN481713, alkaline phosphatase-streptavidin and chromogen.



Immunohistochemistry

Image 3. Anti-SSB antibody IHC of human liver. Immunohistochemistry of formalin-fixed, paraffin-embedded tissue after heat-induced antigen retrieval. Antibody concentration 5 ug/ml. This image was taken for the unconjugated form of this product. Other forms ...