

Datasheet for ABIN6741589  
**anti-SNRPA1 antibody (AA 191-240)**



[Go to Product page](#)

3 Images

## Overview

Quantity:	100 µL
Target:	SNRPA1 (SNRPA)
Binding Specificity:	AA 191-240
Reactivity:	Human, Mouse, Rat, Dog, Sheep, Cow, Horse, Guinea Pig, Zebrafish (Danio rerio), Rabbit, Monkey, Pig
Host:	Rabbit
Clonality:	Polyclonal
Conjugate:	This SNRPA1 antibody is un-conjugated
Application:	Western Blotting (WB), Immunohistochemistry (IHC), Immunohistochemistry (Paraffin-embedded Sections) (IHC (p))

## Product Details

Brand:	IHC-plus™
Immunogen:	Synthetic peptide located between aa191-240 of human SNRPA (P09012, NP_004587). Percent identity by BLAST analysis: Human, Chimpanzee, Gorilla, Gibbon, Monkey, Galago, Marmoset, Mouse, Rat, Sheep, Panda, Dog, Bovine, Rabbit, Horse, Pig, Opossum, Guinea pig (100%), Xenopus, Frog (92%), Zebrafish (84%).  Type of Immunogen: Synthetic peptide
Isotype:	IgG
Specificity:	Human SNRPA

## Product Details

Predicted Reactivity:	Percent identity by BLAST analysis: Human, Mouse, Rat, Sheep, Dog, Bovine, Pig, Guinea pig (100%) Xenopus (92%) Zebrafish (84%).
Purification:	Immunoaffinity purified

## Target Details

Target:	SNRPA1 (SNRPA)
Alternative Name:	SNRPA / U1A ( <a href="#">SNRPA Products</a> )
Background:	Name/Gene ID: SNRPA  Synonyms: SNRPA, U1A, Mud1, U1 snRNP A, U1 snRNP-specific protein A, U1-A
Gene ID:	6626
NCBI Accession:	<a href="#">NP_004587</a>
UniProt:	<a href="#">P09012</a>

## Application Details

Application Notes:	Approved: IHC, IHC-P (5 µg/mL), WB (0.2 - 1 µg/mL)  Usage: Immunohistochemistry: This antibody was validated for use in immunohistochemistry on a panel of 21 formalin-fixed, paraffin-embedded (FFPE) human tissues after heat induced antigen retrieval in pH 6.0 citrate buffer. After incubation with the primary antibody, slides were incubated with biotinylated secondary antibody, followed by alkaline phosphatase-streptavidin and chromogen. The stained slides were evaluated by a pathologist to confirm staining specificity. The optimal working concentration for this antibody was determined to be 5 µg/mL.
Comment:	Target Species of Antibody: Human
Restrictions:	For Research Use only

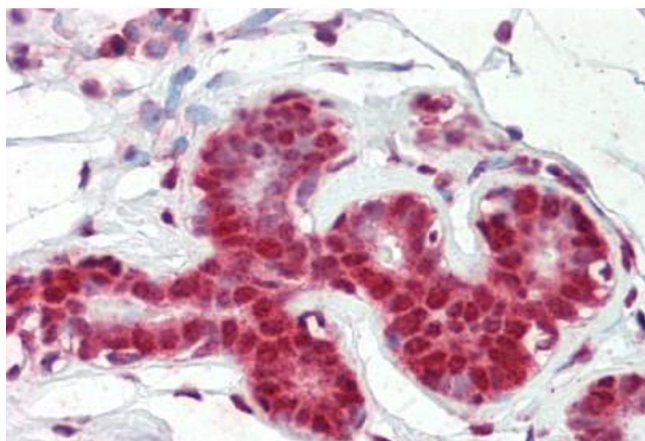
## Handling

Format:	Lyophilized
Reconstitution:	After adding water, will consist of PBS buffer with 2 % sucrose
Concentration:	Lot specific
Buffer:	Lyophilized from PBS with 2 % sucrose

## Handling

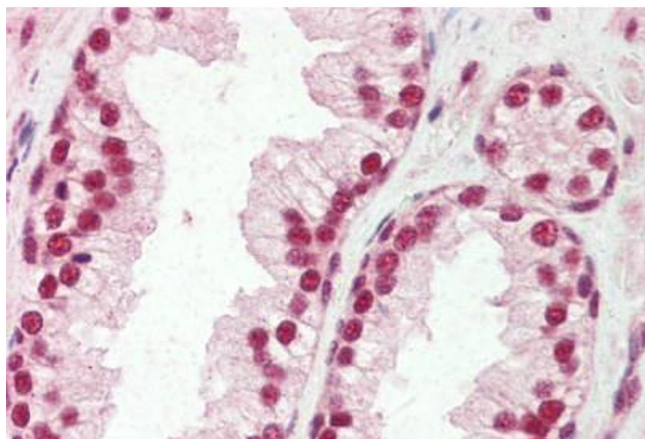
Handling Advice:	Avoid repeat freeze-thaw cycles.
Storage:	4 °C, -20 °C
Storage Comment:	Long term: -20°C, the use of 50% glycerol is recommended if storing aliquots in -20°C for long term use (up to 1 year) Short term (less than 1 week): 4°C. Avoid freeze-thaw cycles.

## Images



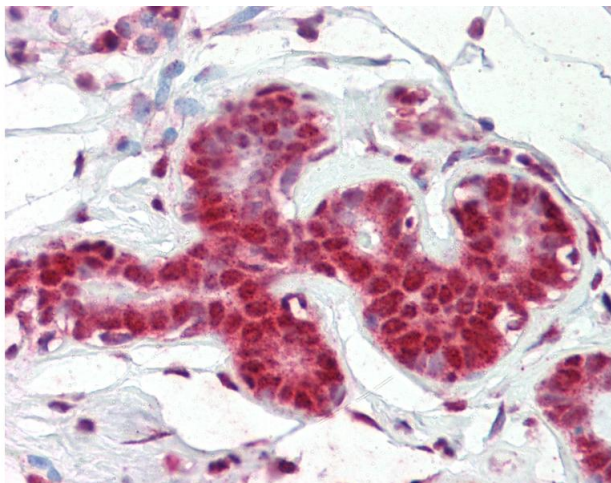
### Immunohistochemistry (Paraffin-embedded Sections)

**Image 1.** Human Breast (formalin-fixed, paraffin-embedded) stained with SNRPA antibody ABIN462227 followed by biotinylated goat anti-rabbit IgG secondary antibody ABIN481713, alkaline phosphatase-streptavidin and chromogen.



### Immunohistochemistry (Paraffin-embedded Sections)

**Image 2.** Human Prostate (formalin-fixed, paraffin-embedded) stained with SNRPA antibody ABIN462227 followed by biotinylated goat anti-rabbit IgG secondary antibody ABIN481713, alkaline phosphatase-streptavidin and chromogen.



#### Immunohistochemistry

**Image 3.** Anti-SNRPA antibody IHC of human breast. Immunohistochemistry of formalin-fixed, paraffin-embedded tissue after heat-induced antigen retrieval. Antibody concentration 5 ug/ml. This image was taken for the unconjugated form of this product. Other for ...