

Datasheet for ABIN6741590 anti-RPF1 antibody (AA 45-94)



[Go to Product page](#)

4 Images

Overview

| | |
|----------------------|--|
| Quantity: | 100 µL |
| Target: | RPF1 |
| Binding Specificity: | AA 45-94 |
| Reactivity: | Human, Mouse, Rat, Rabbit, Cow, Guinea Pig, Horse, Bat, Monkey |
| Host: | Rabbit |
| Clonality: | Polyclonal |
| Conjugate: | This RPF1 antibody is un-conjugated |
| Application: | Western Blotting (WB), Immunohistochemistry (IHC), Immunohistochemistry (Paraffin-embedded Sections) (IHC (p)) |

Product Details

| | |
|-----------------------|---|
| Brand: | IHC-plus™ |
| Immunogen: | Synthetic peptide located between aa45-94 of human RPF1 (Q9H9Y2, NP_079341). Percent identity by BLAST analysis: Human, Chimpanzee, Gorilla, Orangutan, Gibbon, Monkey, Galago, Marmoset, Mouse, Rat, Elephant, Bovine, Bat, Rabbit, Horse, Opossum, Guinea pig (100%), Dog, Zebra finch, Chicken, Armadillo (92%). Type of Immunogen: Synthetic peptide |
| Isotype: | IgG |
| Specificity: | Human RPF1 / BXDC5 |
| Predicted Reactivity: | Percent identity by BLAST analysis: Human, Orangutan, Mouse, Rat, Bovine (100%) Dog, |

Product Details

Armadillo (92%).

Purification: Immunoaffinity purified

Target Details

Target: RPF1

Alternative Name: BXDC5 / RPF1 ([RPF1 Products](#))

Background: Name/Gene ID: RPF1

Synonyms: RPF1, BBR140, Brix domain containing 5, BXDC5, Ribosome production factor 1, RNA processing factor 1 (RPF1), RP11-118B23.1

Gene ID: 80135

NCBI Accession: [NP_079341](#)

UniProt: [Q9H9Y2](#)

Application Details

Application Notes: Approved: IHC, IHC-P (5 µg/mL), WB (0.2 - 1 µg/mL)

Usage: Immunohistochemistry: This antibody was validated for use in immunohistochemistry on a panel of 21 formalin-fixed, paraffin-embedded (FFPE) human tissues after heat induced antigen retrieval in pH 6.0 citrate buffer. After incubation with the primary antibody, slides were incubated with biotinylated secondary antibody, followed by alkaline phosphatase-streptavidin and chromogen. The stained slides were evaluated by a pathologist to confirm staining specificity. The optimal working concentration for this antibody was determined to be 5 µg/mL.

Comment: Target Species of Antibody: Human

Restrictions: For Research Use only

Handling

Format: Lyophilized

Reconstitution: After adding water, will consist of PBS buffer with 2 % sucrose

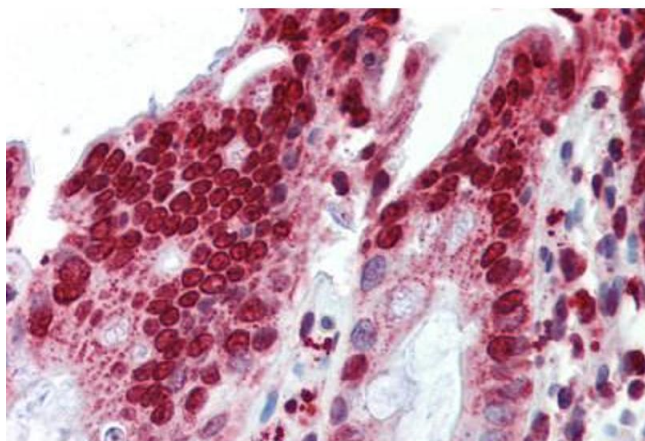
Concentration: Lot specific

Buffer: Lyophilized from PBS with 2 % sucrose

Handling

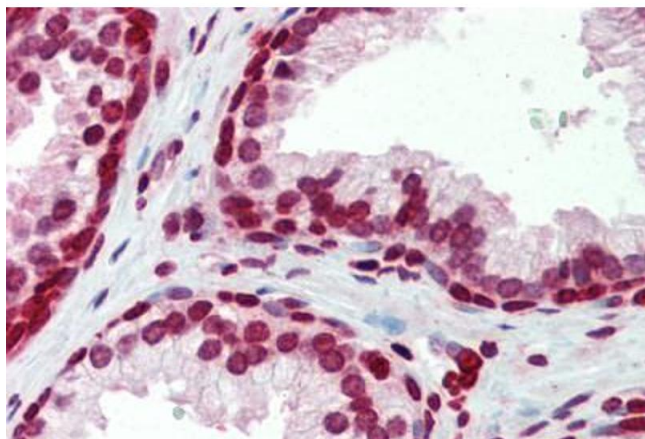
| | |
|------------------|---|
| Handling Advice: | Avoid repeat freeze-thaw cycles. |
| Storage: | 4 °C, -20 °C |
| Storage Comment: | Long term: -20°C, the use of 50% glycerol is recommended if storing aliquots in -20°C for long term use (up to 1 year) Short term (less than 1 week): 4°C. Avoid freeze-thaw cycles. |

Images



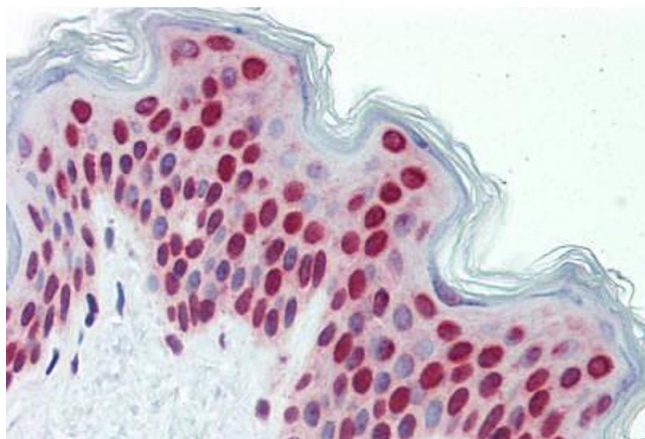
Immunohistochemistry (Paraffin-embedded Sections)

Image 1. Human Colon (formalin-fixed, paraffin-embedded) stained with BXDC5 antibody ABIN462228 followed by biotinylated goat anti-rabbit IgG secondary antibody ABIN481713, alkaline phosphatase-streptavidin and chromogen.



Immunohistochemistry (Paraffin-embedded Sections)

Image 2. Human Prostate (formalin-fixed, paraffin-embedded) stained with BXDC5 antibody ABIN462228 followed by biotinylated goat anti-rabbit IgG secondary antibody ABIN481713, alkaline phosphatase-streptavidin and chromogen.



Immunohistochemistry (Paraffin-embedded Sections)

Image 3. Human Skin (formalin-fixed, paraffin-embedded) stained with BXDC5 antibody ABIN462228 followed by biotinylated goat anti-rabbit IgG secondary antibody ABIN481713, alkaline phosphatase-streptavidin and chromogen.

Please check the [product details page](#) for more images. Overall 4 images are available for ABIN6741590.