

Datasheet for ABIN6741598

anti-GTPBP10 antibody (AA 254-303)**3** Images[Go to Product page](#)

Overview

Quantity:	100 µL
Target:	GTPBP10
Binding Specificity:	AA 254-303
Reactivity:	Human, Mouse, Rat, Rabbit, Horse, Pig, Hamster, Monkey
Host:	Rabbit
Clonality:	Polyclonal
Conjugate:	This GTPBP10 antibody is un-conjugated
Application:	Western Blotting (WB), Immunohistochemistry (IHC), Immunohistochemistry (Paraffin-embedded Sections) (IHC (p))

Product Details

Brand:	IHC-plus™
Immunogen:	<p>Synthetic peptide located between aa254-303 of human GTPBP10 (A4D1E9, NP_149098).</p> <p>Percent identity by BLAST analysis: Human, Chimpanzee, Gorilla, Gibbon, Baboon, Monkey, Galago, Marmoset, Mouse, Rat, Shrew, Hamster, Elephant, Rabbit, Horse, Pig, Opossum, Armadillo, Lizard, Stickleback (100%), Dog, Bovine, Bat, Guinea pig (92%), Salmon (90%), Turkey, Zebra finch, Chicken, Platypus (85%), Zebrafish (84%).</p> <p>Type of Immunogen: Synthetic peptide</p>
Isotype:	IgG
Specificity:	Human GTPBP10

Product Details

Predicted Reactivity: Percent identity by BLAST analysis: Human, Mouse, Rat, Rabbit, Horse, Pig (100%) Dog, Guinea pig (92%) Chicken (85%).

Purification: Immunoaffinity purified

Target Details

Target: GTPBP10

Alternative Name: GTPBP10 ([GTPBP10 Products](#))

Background: Name/Gene ID: GTPBP10

Synonyms: GTPBP10, DKFZP686A10121, ObgH2, Protein obg homolog 2, UG0751c10, GTP-binding protein 10

Gene ID: 85865

NCBI Accession: [NP_149098](#)

UniProt: [A4D1E9](#)

Application Details

Application Notes: Approved: IHC, IHC-P (5 µg/mL), WB

Usage: Immunohistochemistry: This antibody was validated for use in immunohistochemistry on a panel of 21 formalin-fixed, paraffin-embedded (FFPE) human tissues after heat induced antigen retrieval in pH 6.0 citrate buffer. After incubation with the primary antibody, slides were incubated with biotinylated secondary antibody, followed by alkaline phosphatase-streptavidin and chromogen. The stained slides were evaluated by a pathologist to confirm staining specificity. The optimal working concentration for this antibody was determined to be 5 µg/mL. ELISA titer using peptide based assay: 1:312500. Western Blot: Suggested dilution at 1 µg/mL in 5 % skim milk / PBS buffer, and HRP conjugated anti-Rabbit IgG should be diluted in 1:50000 - 100000 as second antibody.

Comment: Target Species of Antibody: Human

Restrictions: For Research Use only

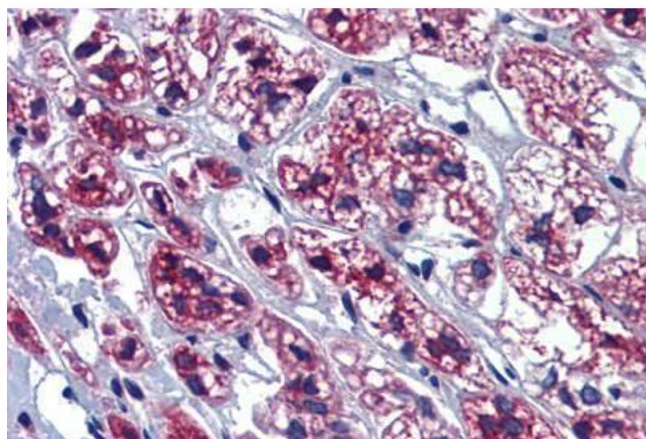
Handling

Format: Lyophilized

Handling

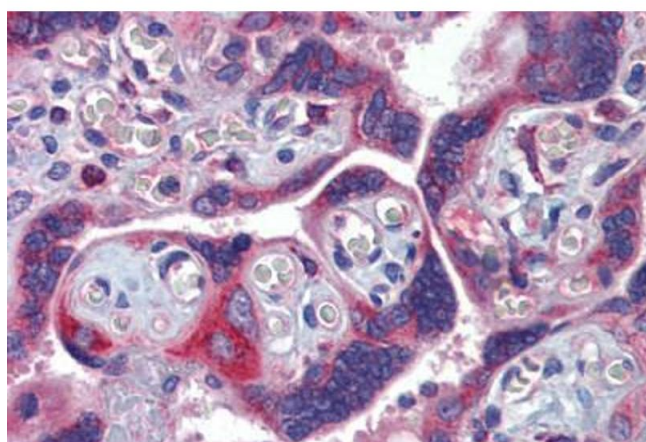
Reconstitution:	Distilled Water.
Concentration:	Lot specific
Buffer:	Lyophilized from PBS with 2 % sucrose
Handling Advice:	Avoid repeat freeze-thaw cycles.
Storage:	4 °C, -20 °C
Storage Comment:	Long term: -20°C, the use of 50% glycerol is recommended if storing aliquots in -20°C for long term use (up to 1 year) Short term (less than 1 week): 4°C. Avoid freeze-thaw cycles.

Images



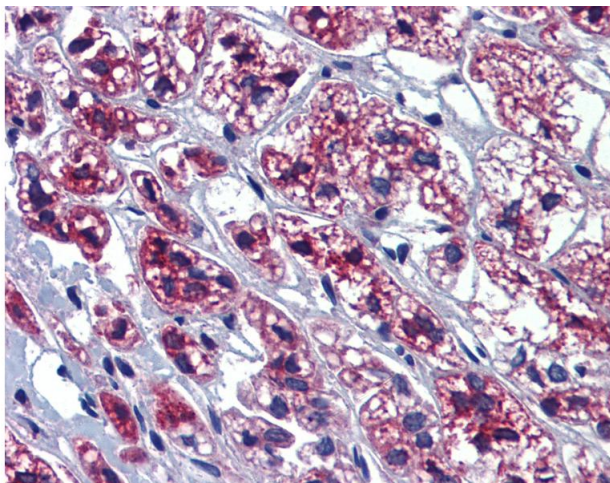
Immunohistochemistry (Paraffin-embedded Sections)

Image 1. Human Adrenal (formalin-fixed, paraffin-embedded) stained with GTPBP10 antibody ABIN462237 followed by biotinylated goat anti-rabbit IgG secondary antibody ABIN481713, alkaline phosphatase-streptavidin and chromogen.



Immunohistochemistry (Paraffin-embedded Sections)

Image 2. Human Placenta (formalin-fixed, paraffin-embedded) stained with GTPBP10 antibody ABIN462237 followed by biotinylated goat anti-rabbit IgG secondary antibody ABIN481713, alkaline phosphatase-streptavidin and chromogen.



Immunohistochemistry

Image 3. Anti-GTPBP10 antibody IHC of human adrenal. Immunohistochemistry of formalin-fixed, paraffin-embedded tissue after heat-induced antigen retrieval. Antibody concentration 5 ug/ml. This image was taken for the unconjugated form of this product. Other ...