



[Go to Product page](#)

Datasheet for ABIN6741602  
**anti-SLC35A5 antibody (AA 36-85)**

3 Images

### Overview

Quantity:	100 µL
Target:	SLC35A5
Binding Specificity:	AA 36-85
Reactivity:	Human, Mouse, Rat, Cow, Dog, Guinea Pig, Horse, Bat, Monkey, Pig
Host:	Rabbit
Clonality:	Polyclonal
Conjugate:	This SLC35A5 antibody is un-conjugated
Application:	Western Blotting (WB), Immunohistochemistry (IHC), Immunohistochemistry (Paraffin-embedded Sections) (IHC (p))

### Product Details

Brand:	IHC-plus™
Immunogen:	Synthetic peptide located between aa36-85 of human SLC35A5 (Q9BS91, NP_060415). Percent identity by BLAST analysis: Human, Chimpanzee, Gorilla, Orangutan, Gibbon, Monkey, Marmoset, Mouse, Rat, Elephant, Dog, Bovine, Bat, Horse, Pig, Guinea pig, Platypus (100%), Rabbit, Turkey, Zebra finch, Chicken, Lizard (92%), Opossum (85%), Zebrafish (84%).  Type of Immunogen: Synthetic peptide
Isotype:	IgG
Specificity:	Human SLC35A5
Predicted Reactivity:	Percent identity by BLAST analysis: Human, Mouse, Rat, Dog, Horse, Pig, Guinea pig (100%)

## Product Details

---

Rabbit, Chicken (92%).

Purification: Immunoaffinity purified

## Target Details

---

Target: SLC35A5

Alternative Name: SLC35A5 ([SLC35A5 Products](#))

Background: Name/Gene ID: SLC35A5  
Subfamily: Drug/metabolite transporter  
Family: Transporter

Synonyms: SLC35A5

Gene ID: 55032

NCBI Accession: [NP\\_060415](#)

UniProt: [Q9BS91](#)

## Application Details

---

Application Notes: Approved: IHC, IHC-P (5 µg/mL), WB

Usage: Immunohistochemistry: This antibody was validated for use in immunohistochemistry on a panel of 21 formalin-fixed, paraffin-embedded (FFPE) human tissues after heat induced antigen retrieval in pH 6.0 citrate buffer. After incubation with the primary antibody, slides were incubated with biotinylated secondary antibody, followed by alkaline phosphatase-streptavidin and chromogen. The stained slides were evaluated by a pathologist to confirm staining specificity. The optimal working concentration for this antibody was determined to be 5 µg/mL. ELISA titer using peptide based assay: 1:62500. Western Blot: Suggested dilution at 1 µg/mL in 5 % skim milk / PBS buffer, and HRP conjugated anti-Rabbit IgG should be diluted in 1:50000 - 100000 as second antibody.

Comment: Target Species of Antibody: Human

Restrictions: For Research Use only

## Handling

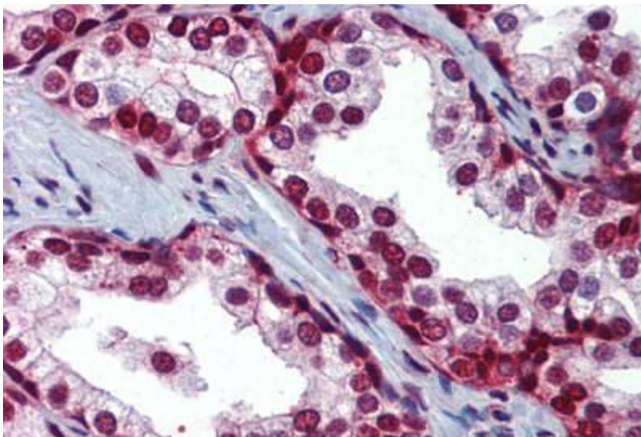
---

Format: Lyophilized

## Handling

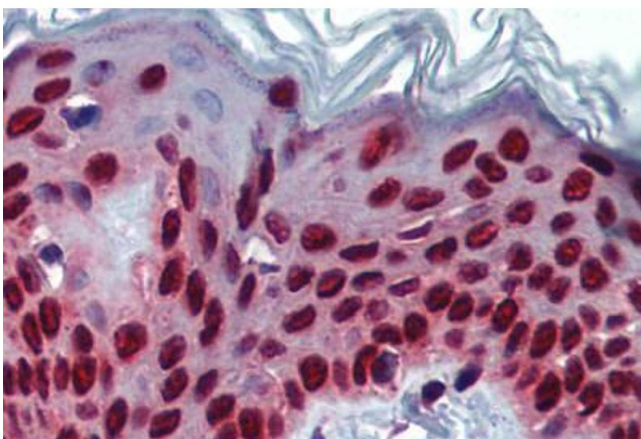
Reconstitution:	Distilled Water.
Concentration:	Lot specific
Buffer:	Lyophilized from PBS with 2 % sucrose
Handling Advice:	Avoid repeat freeze-thaw cycles.
Storage:	4 °C, -20 °C
Storage Comment:	Long term: -20°C, the use of 50% glycerol is recommended if storing aliquots in -20°C for long term use (up to 1 year) Short term (less than 1 week): 4°C. Avoid freeze-thaw cycles.

## Images



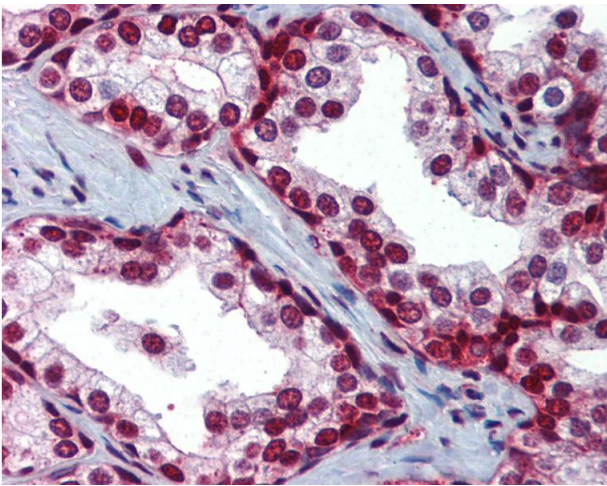
### Immunohistochemistry (Paraffin-embedded Sections)

**Image 1.** Human Prostate (formalin-fixed, paraffin-embedded) stained with SLC35A5 antibody ABIN462241 followed by biotinylated goat anti-rabbit IgG secondary antibody ABIN481713, alkaline phosphatase-streptavidin and chromogen.



### Immunohistochemistry (Paraffin-embedded Sections)

**Image 2.** Human Skin (formalin-fixed, paraffin-embedded) stained with SLC35A5 antibody ABIN462241 followed by biotinylated goat anti-rabbit IgG secondary antibody ABIN481713, alkaline phosphatase-streptavidin and chromogen.



### Immunohistochemistry

**Image 3.** Anti-SLC35A5 antibody IHC of human prostate. Immunohistochemistry of formalin-fixed, paraffin-embedded tissue after heat-induced antigen retrieval. Antibody concentration 5 ug/ml. This image was taken for the unconjugated form of this product. Other ...