

Datasheet for ABIN6741604 anti-SLC39A5 antibody (AA 38-87)



[Go to Product page](#)

3 Images

Overview

Quantity:	100 µL
Target:	SLC39A5
Binding Specificity:	AA 38-87
Reactivity:	Human, Cow, Dog, Guinea Pig, Monkey, Pig
Host:	Rabbit
Clonality:	Polyclonal
Conjugate:	This SLC39A5 antibody is un-conjugated
Application:	Western Blotting (WB), Immunohistochemistry (IHC), Immunohistochemistry (Paraffin-embedded Sections) (IHC (p))

Product Details

Brand:	IHC-plus™
Immunogen:	Synthetic peptide located between aa38-87 of human SLC39A5 (Q6ZMH5, NP_775867). Percent identity by BLAST analysis: Human, Chimpanzee, Gorilla, Gibbon, Monkey, Marmoset, Platypus (100%), Galago, Mouse, Rat, Hamster, Elephant, Bat, Rabbit, Horse (92%), Panda, Dog, Bovine, Pig, Guinea pig (85%). Type of Immunogen: Synthetic peptide
Isotype:	IgG
Specificity:	Human SLC39A5
Predicted Reactivity:	Percent identity by BLAST analysis: Human (100%) Rat, Rabbit (92%) Dog, Bovine, Pig, Guinea

Product Details

pig (85%).

Purification: Immunoaffinity purified

Target Details

Target: SLC39A5

Alternative Name: SLC39A5 / ZIP5 ([SLC39A5 Products](#))

Background: Name/Gene ID: SLC39A5

Synonyms: SLC39A5, LZT-Hs7, ZIP5, Zrt- and Irt-like protein 5, ZIP-5, Zinc transporter ZIP5

Gene ID: 283375

NCBI Accession: [NP_775867](#)

UniProt: [Q6ZMH5](#)

Pathways: [Transition Metal Ion Homeostasis](#)

Application Details

Application Notes: Approved: IHC, IHC-P (5 µg/mL), WB

Usage: Immunohistochemistry: This antibody was validated for use in immunohistochemistry on a panel of 21 formalin-fixed, paraffin-embedded (FFPE) human tissues after heat induced antigen retrieval in pH 6.0 citrate buffer. After incubation with the primary antibody, slides were incubated with biotinylated secondary antibody, followed by alkaline phosphatase-streptavidin and chromogen. The stained slides were evaluated by a pathologist to confirm staining specificity. The optimal working concentration for this antibody was determined to be 5 µg/mL. ELISA titer using peptide based assay: 1:312500. Western Blot: Suggested dilution at 1 µg/mL in 5 % skim milk / PBS buffer, and HRP conjugated anti-Rabbit IgG should be diluted in 1:50000 - 100000 as second antibody.

Comment: Target Species of Antibody: Human

Restrictions: For Research Use only

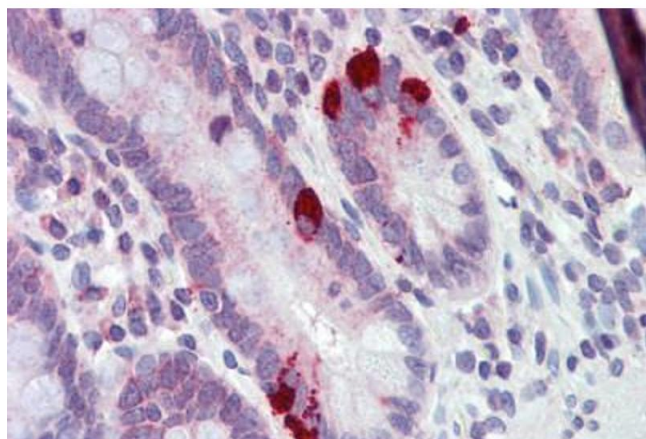
Handling

Format: Lyophilized

Handling

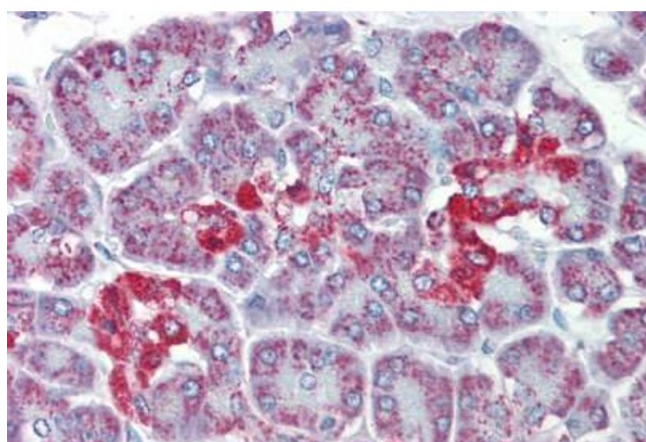
Reconstitution:	Distilled Water.
Concentration:	Lot specific
Buffer:	Lyophilized from PBS with 2 % sucrose
Handling Advice:	Avoid repeat freeze-thaw cycles.
Storage:	4 °C, -20 °C
Storage Comment:	Long term: -20°C, the use of 50% glycerol is recommended if storing aliquots in -20°C for long term use (up to 1 year) Short term (less than 1 week): 4°C. Avoid freeze-thaw cycles.

Images



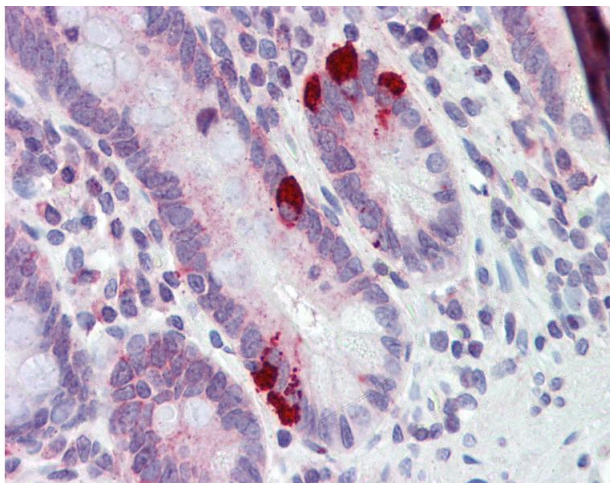
Immunohistochemistry (Paraffin-embedded Sections)

Image 1. Human Small Intestine (formalin-fixed, paraffin-embedded) stained with SLC39A5 antibody ABIN462243 followed by biotinylated goat anti-rabbit IgG secondary antibody ABIN481713, alkaline phosphatase-streptavidin and chromogen.



Immunohistochemistry (Paraffin-embedded Sections)

Image 2. Human Pancreas (formalin-fixed, paraffin-embedded) stained with SLC39A5 antibody ABIN462243 followed by biotinylated goat anti-rabbit IgG secondary antibody ABIN481713, alkaline phosphatase-streptavidin and chromogen.



Immunohistochemistry

Image 3. Anti-SLC39A5 antibody IHC of human small intestine. Immunohistochemistry of formalin-fixed, paraffin-embedded tissue after heat-induced antigen retrieval. Antibody concentration 5 ug/ml. This image was taken for the unconjugated form of this product ...