



[Go to Product page](#)

Datasheet for ABIN6741605
anti-PODXL antibody (AA 301-350)

3 Images

Overview

Quantity:	100 µL
Target:	PODXL
Binding Specificity:	AA 301-350
Reactivity:	Human, Monkey
Host:	Rabbit
Clonality:	Polyclonal
Conjugate:	This PODXL antibody is un-conjugated
Application:	Western Blotting (WB), Immunohistochemistry (IHC), Immunohistochemistry (Paraffin-embedded Sections) (IHC (p))

Product Details

Brand:	IHC-plus™
Immunogen:	Synthetic peptide located between aa301-350 of human PODXL (A6NHX8, NP_001018121). Percent identity by BLAST analysis: Human, Chimpanzee, Gibbon, Monkey (100%), Gorilla (92%). Type of Immunogen: Synthetic peptide
Isotype:	IgG
Specificity:	Human PODXL
Predicted Reactivity:	Percent identity by BLAST analysis: Human (100%).
Purification:	Immunoaffinity purified

Target Details

Target:	PODXL
Alternative Name:	PODXL / Podocalyxin (PODXL Products)
Background:	Name/Gene ID: PODXL Synonyms: PODXL, GCTM-2 antigen, gp200, PCLP, PCLP-1, PCLP1, Podocalyxin-like protein 1, Podocalyxin, Podocalyxin-like, TRA-1-60, TRA-1-81
Gene ID:	5420
NCBI Accession:	NP_001018121
UniProt:	O00592
Pathways:	Tube Formation

Application Details

Application Notes:	Approved: IHC, IHC-P (5 µg/mL), WB Usage: Immunohistochemistry: This antibody was validated for use in immunohistochemistry on a panel of 21 formalin-fixed, paraffin-embedded (FFPE) human tissues after heat induced antigen retrieval in pH 6.0 citrate buffer. After incubation with the primary antibody, slides were incubated with biotinylated secondary antibody, followed by alkaline phosphatase-streptavidin and chromogen. The stained slides were evaluated by a pathologist to confirm staining specificity. The optimal working concentration for this antibody was determined to be 5 µg/mL. ELISA titer using peptide based assay: 1:312500. Western Blot: Suggested dilution at 0.5 µg/mL in 5 % skim milk / PBS buffer, and HRP conjugated anti-Rabbit IgG should be diluted in 1:50000 - 100000 as second antibody.
Comment:	Target Species of Antibody: Human
Restrictions:	For Research Use only

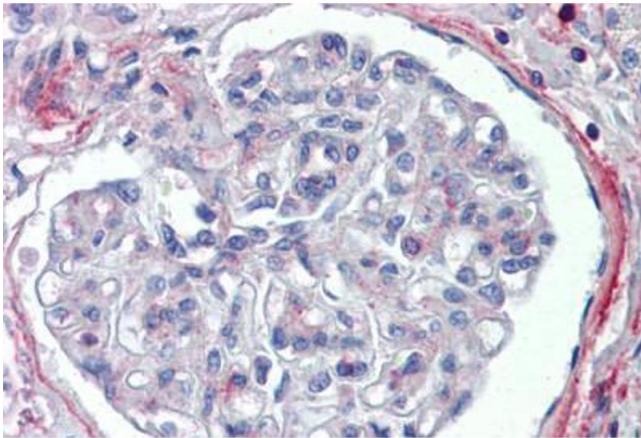
Handling

Format:	Lyophilized
Reconstitution:	Distilled Water.
Concentration:	Lot specific
Buffer:	Lyophilized from PBS with 2 % sucrose

Handling

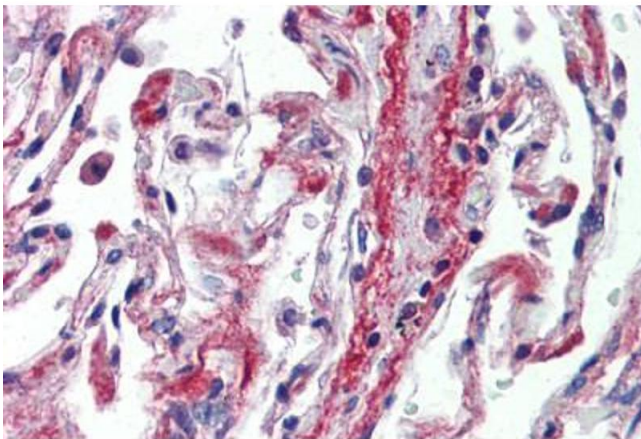
Handling Advice:	Avoid repeat freeze-thaw cycles.
Storage:	4 °C,-20 °C
Storage Comment:	Long term: -20°C, the use of 50% glycerol is recommended if storing aliquots in -20°C for long term use (up to 1 year) Short term (less than 1 week): 4°C. Avoid freeze-thaw cycles.

Images



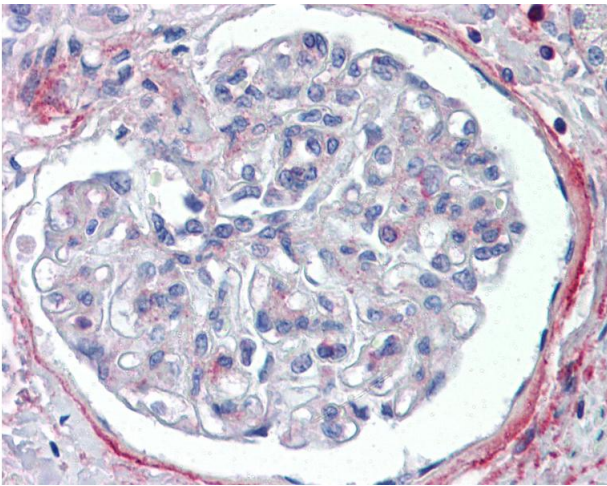
Immunohistochemistry (Paraffin-embedded Sections)

Image 1. Human Kidney (formalin-fixed, paraffin-embedded) stained with PODXL antibody ABIN462244 followed by biotinylated goat anti-rabbit IgG secondary antibody ABIN481713, alkaline phosphatase-streptavidin and chromogen.



Immunohistochemistry (Paraffin-embedded Sections)

Image 2. Human Lung (formalin-fixed, paraffin-embedded) stained with PODXL antibody ABIN462244 followed by biotinylated goat anti-rabbit IgG secondary antibody ABIN481713, alkaline phosphatase-streptavidin and chromogen.



Immunohistochemistry

Image 3. Anti-PODXL antibody IHC of human kidney. Immunohistochemistry of formalin-fixed, paraffin-embedded tissue after heat-induced antigen retrieval. Antibody concentration 5 ug/ml. This image was taken for the unconjugated form of this product. Other for ...