



[Go to Product page](#)

Datasheet for ABIN6741612
anti-CBLN4 antibody (AA 125-174)

3 Images

Overview

Quantity:	100 µL
Target:	CBLN4
Binding Specificity:	AA 125-174
Reactivity:	Human, Mouse, Rat, Monkey, Cow, Pig, Rabbit, Zebrafish (Danio rerio), Dog, Guinea Pig, Horse, Xenopus laevis, Bat, Chicken
Host:	Rabbit
Clonality:	Polyclonal
Conjugate:	This CBLN4 antibody is un-conjugated
Application:	Western Blotting (WB), Immunohistochemistry (IHC), Immunohistochemistry (Paraffin-embedded Sections) (IHC (p))

Product Details

Brand:	IHC-plus™
Immunogen:	Synthetic peptide located between aa125-174 of human CBLN4 (Q9NTU7, NP_542184). Percent identity by BLAST analysis: Human, Chimpanzee, Gorilla, Gibbon, Monkey, Galago, Marmoset, Mouse, Rat, Elephant, Panda, Dog, Bovine, Bat, Rabbit, Horse, Pig, Opossum, Guinea pig, Turkey, Zebra finch, Chicken, Platypus, Xenopus, Stickleback, Zebrafish (100%), Salmon, Smelt (92%), Lizard, Seabass (85%). Type of Immunogen: Synthetic peptide
Isotype:	IgG

Product Details

Specificity:	Human CBLN4
Predicted Reactivity:	Percent identity by BLAST analysis: Human, Mouse, Rat, Dog, Bovine, Rabbit, Pig, Guinea pig, Chicken, Xenopus, Zebrafish (100%).
Purification:	Immunoaffinity purified

Target Details

Target:	CBLN4
Alternative Name:	CBLN4 / Cerebellin 4 (CBLN4 Products)
Background:	Name/Gene ID: CBLN4 Synonyms: CBLN4, CBLNL1, Cerebellin precursor-like 1, Cerebellin-4, Cerebellin 4 precursor, Cerebellin-like glycoprotein 1, DJ885A10.1
Gene ID:	140689
NCBI Accession:	NP_542184
UniProt:	Q9NTU7

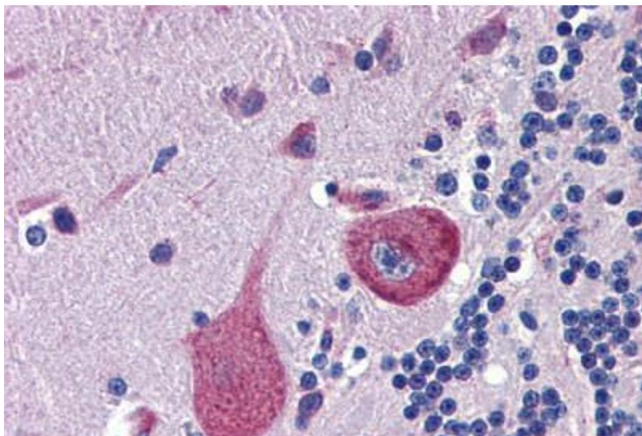
Application Details

Application Notes:	Approved: IHC, IHC-P (5 µg/mL), WB Usage: Immunohistochemistry: This antibody was validated for use in immunohistochemistry on a panel of 21 formalin-fixed, paraffin-embedded (FFPE) human tissues after heat induced antigen retrieval in pH 6.0 citrate buffer. After incubation with the primary antibody, slides were incubated with biotinylated secondary antibody, followed by alkaline phosphatase-streptavidin and chromogen. The stained slides were evaluated by a pathologist to confirm staining specificity. The optimal working concentration for this antibody was determined to be 5 µg/mL. ELISA titer using peptide based assay: 1:312500. Western Blot: Suggested dilution at 1 µg/mL in 5 % skim milk / PBS buffer, and HRP conjugated anti-Rabbit IgG should be diluted in 1:50000 - 100000 as second antibody.
Comment:	Target Species of Antibody: Human
Restrictions:	For Research Use only

Handling

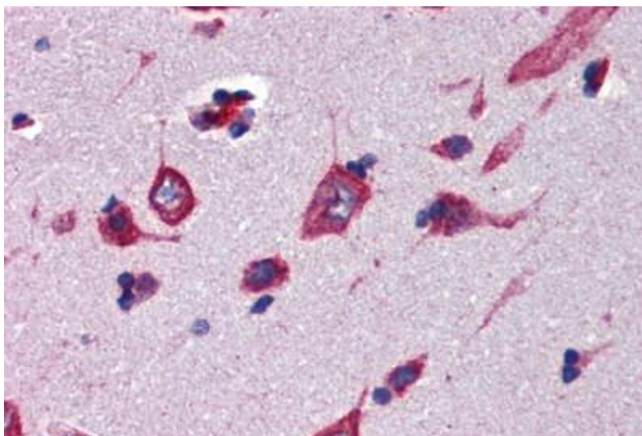
Format:	Lyophilized
Reconstitution:	Distilled Water.
Concentration:	Lot specific
Buffer:	Lyophilized from PBS with 2 % sucrose
Handling Advice:	Avoid repeat freeze-thaw cycles.
Storage:	4 °C,-20 °C
Storage Comment:	Long term: -20°C, the use of 50% glycerol is recommended if storing aliquots in -20°C for long term use (up to 1 year) Short term (less than 1 week): 4°C. Avoid freeze-thaw cycles.

Images



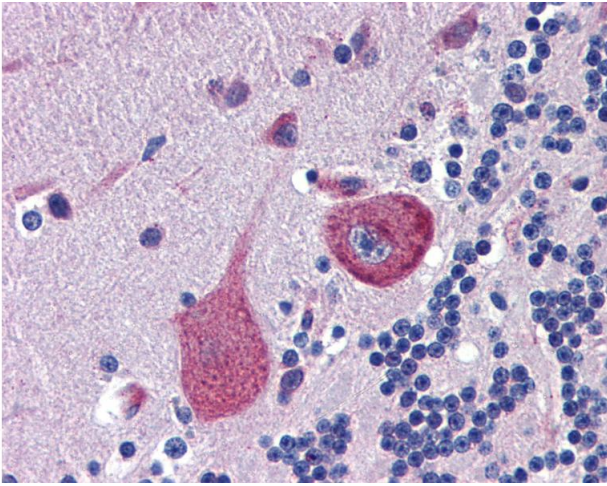
Immunohistochemistry (Paraffin-embedded Sections)

Image 1. Human Brain, Cerebellum (formalin-fixed, paraffin-embedded) stained with CBLN4 antibody ABIN462251 followed by biotinylated goat anti-rabbit IgG secondary antibody ABIN481713, alkaline phosphatase-streptavidin and chromogen.



Immunohistochemistry (Paraffin-embedded Sections)

Image 2. Human Brain, Cortex (formalin-fixed, paraffin-embedded) stained with CBLN4 antibody ABIN462251 followed by biotinylated goat anti-rabbit IgG secondary antibody ABIN481713, alkaline phosphatase-streptavidin and chromogen.



Immunohistochemistry

Image 3. Anti-CBLN4 antibody IHC of human brain, cerebellum. Immunohistochemistry of formalin-fixed, paraffin-embedded tissue after heat-induced antigen retrieval. Antibody concentration 5 ug/ml. This image was taken for the unconjugated form of this product ...