

Datasheet for ABIN6741614  
**anti-PLEKHH2 antibody (AA 1043-1092)**



[Go to Product page](#)

3 Images

Overview

|                      |  |
|----------------------|--|
| Quantity:            | 100 µL   |
| Target:              | PLEKHH2  |
| Binding Specificity: | AA 1043-1092   |
| Reactivity:          | Human, Mouse, Rabbit, Cow, Dog, Guinea Pig, Horse, Bat, Monkey, Pig  |
| Host:                | Rabbit   |
| Clonality:           | Polyclonal   |
| Conjugate:           | This PLEKHH2 antibody is un-conjugated   |
| Application:         | Western Blotting (WB), Immunohistochemistry (IHC), Immunohistochemistry (Paraffin-embedded Sections) (IHC (p)) |

Product Details

|                       |  |
|-----------------------|--|
| Brand:                | IHC-plus™  |
| Immunogen:            | Synthetic peptide located between aa1043-1092 of human PLEKHH2 (Q8IVE3, NP_742066).<br>Percent identity by BLAST analysis: Human, Gorilla, Gibbon, Monkey, Galago, Marmoset, Mouse, Elephant, Panda, Dog, Bovine, Bat, Rabbit, Horse, Pig, Guinea pig, Zebra finch (100%), Rat, Opossum (92%), Turkey, Chicken (86%), Xenopus, Drosophila (84%).<br><br>Type of Immunogen: Synthetic peptide |
| Isotype:              | IgG  |
| Specificity:          | Human PLEKHH2  |
| Predicted Reactivity: | Percent identity by BLAST analysis: Dog, Bovine, Rabbit, Horse, Guinea pig (100%) Rat (92%)  |

## Product Details

---

Chicken (86%).

Purification: Immunoaffinity purified

## Target Details

---

Target: PLEKHH2

Alternative Name: PLEKHH2 ([PLEKHH2 Products](#))

Background: Name/Gene ID: PLEKHH2

Synonyms: PLEKHH2, KIAA2028, PLEKHH1L

Gene ID: 130271

NCBI Accession: [NP\\_742066](#)

UniProt: [Q8IVE3](#)

## Application Details

---

Application Notes: Approved: IHC, IHC-P (10 µg/mL), WB

Usage: Immunohistochemistry: This antibody was validated for use in immunohistochemistry on a panel of 21 formalin-fixed, paraffin-embedded (FFPE) human tissues after heat induced antigen retrieval in pH 6.0 citrate buffer. After incubation with the primary antibody, slides were incubated with biotinylated secondary antibody, followed by alkaline phosphatase-streptavidin and chromogen. The stained slides were evaluated by a pathologist to confirm staining specificity. The optimal working concentration for this antibody was determined to be 10 µg/mL. ELISA titer using peptide based assay: 1:1562500. Western Blot: Suggested dilution at 1 µg/mL in 5 % skim milk / PBS buffer, and HRP conjugated anti-Rabbit IgG should be diluted in 1:50000 - 100000 as second antibody.

Comment: Target Species of Antibody: Human

Restrictions: For Research Use only

## Handling

---

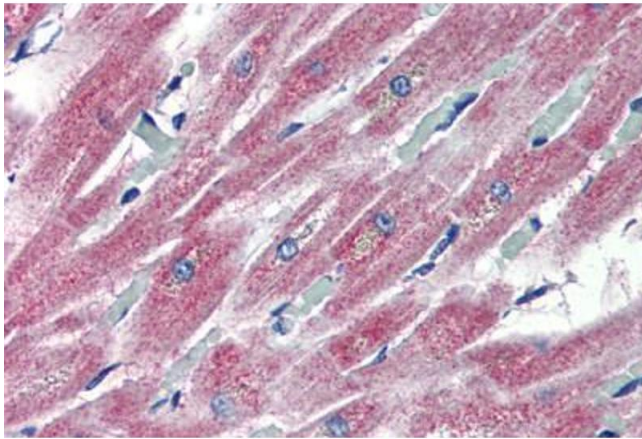
Format: Lyophilized

Reconstitution: Distilled Water.

## Handling

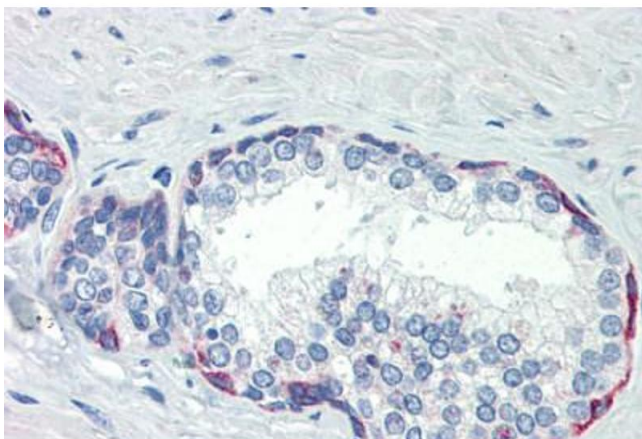
|                  |   |
|------------------|---|
| Concentration:   | Lot specific  |
| Buffer:          | Lyophilized from PBS with 2 % sucrose   |
| Handling Advice: | Avoid repeat freeze-thaw cycles.  |
| Storage:         | 4 °C,-20 °C   |
| Storage Comment: | Long term: -20°C, the use of 50% glycerol is recommended if storing aliquots in -20°C for long term use (up to 1 year)<br>Short term (less than 1 week): 4°C. Avoid freeze-thaw cycles. |

## Images



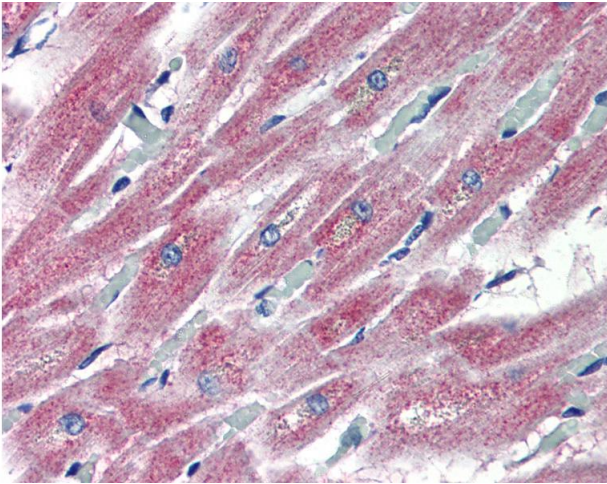
### Immunohistochemistry (Paraffin-embedded Sections)

**Image 1.** Human Heart (formalin-fixed, paraffin-embedded) stained with PLEKHH2 antibody ABIN462253 followed by biotinylated goat anti-rabbit IgG secondary antibody ABIN481713, alkaline phosphatase-streptavidin and chromogen.



### Immunohistochemistry (Paraffin-embedded Sections)

**Image 2.** Human Prostate (formalin-fixed, paraffin-embedded) stained with PLEKHH2 antibody ABIN462253 followed by biotinylated goat anti-rabbit IgG secondary antibody ABIN481713, alkaline phosphatase-streptavidin and chromogen.



### Immunohistochemistry

**Image 3.** Anti-PLEKHH2 antibody IHC of human heart. Immunohistochemistry of formalin-fixed, paraffin-embedded tissue after heat-induced antigen retrieval. Antibody concentration 10 ug/ml. This image was taken for the unconjugated form of this product. Other f ...