

Datasheet for ABIN6741616
anti-SSX2IP antibody (AA 362-411)

3 Images

[Go to Product page](#)

Overview

Quantity:	100 µL
Target:	SSX2IP
Binding Specificity:	AA 362-411
Reactivity:	Human, Dog, Cow, Guinea Pig, Horse, Rabbit, Monkey, Pig
Host:	Rabbit
Clonality:	Polyclonal
Conjugate:	This SSX2IP antibody is un-conjugated
Application:	Western Blotting (WB), Immunohistochemistry (IHC), Immunohistochemistry (Paraffin-embedded Sections) (IHC (p))

Product Details

Brand:	IHC-plus™
Immunogen:	<p>Synthetic peptide located between aa362-411 of human SSX2IP (Q9Y2D8, NP_054740).</p> <p>Percent identity by BLAST analysis: Human, Chimpanzee, Gorilla, Gibbon, Monkey, Marmoset, Elephant, Dog, Bovine, Rabbit, Horse, Pig, Guinea pig, Platypus (100%), Galago, Mouse, Rat, Bat, Opossum (92%).</p> <p>Type of Immunogen: Synthetic peptide</p>
Isotype:	IgG
Specificity:	Human SSX2IP
Predicted Reactivity:	Percent identity by BLAST analysis: Human, Dog, Bovine, Rabbit, Horse, Pig, Guinea pig (100%)

Product Details

Mouse (92%).

Purification: Immunoaffinity purified

Target Details

Target: SSX2IP

Alternative Name: SSX2IP ([SSX2IP Products](#))

Background: Name/Gene ID: SSX2IP

Synonyms: SSX2IP, ADIP, KIAA0923, SSX2-interacting protein

Gene ID: 117178

NCBI Accession: [NP_054740](#)

Application Details

Application Notes: Approved: IHC, IHC-P (5 µg/mL), WB

Usage: Immunohistochemistry: This antibody was validated for use in immunohistochemistry on a panel of 21 formalin-fixed, paraffin-embedded (FFPE) human tissues after heat induced antigen retrieval in pH 6.0 citrate buffer. After incubation with the primary antibody, slides were incubated with biotinylated secondary antibody, followed by alkaline phosphatase-streptavidin and chromogen. The stained slides were evaluated by a pathologist to confirm staining specificity. The optimal working concentration for this antibody was determined to be 5 µg/mL. ELISA titer using peptide based assay: 1:312500. Western Blot: Suggested dilution at 1 µg/mL in 5 % skim milk / PBS buffer, and HRP conjugated anti-Rabbit IgG should be diluted in 1:50000 - 100000 as second antibody.

Comment: Target Species of Antibody: Human

Restrictions: For Research Use only

Handling

Format: Lyophilized

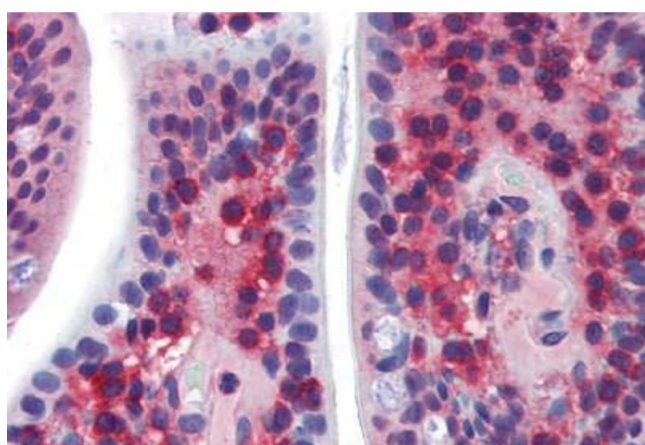
Reconstitution: Distilled Water.

Concentration: Lot specific

Handling

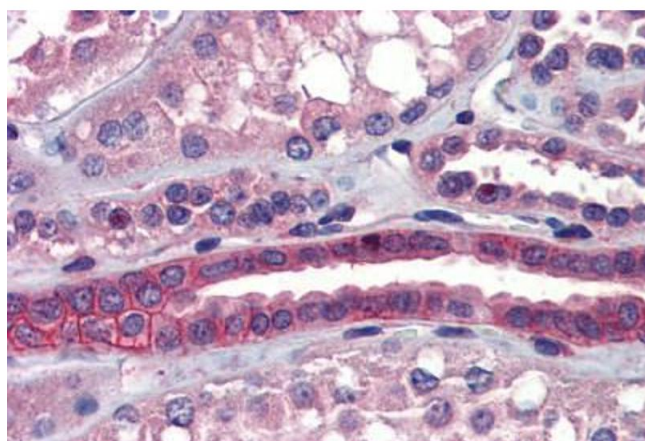
Buffer:	Lyophilized from PBS with 2 % sucrose
Handling Advice:	Avoid repeat freeze-thaw cycles.
Storage:	4 °C, -20 °C
Storage Comment:	Long term: -20°C, the use of 50% glycerol is recommended if storing aliquots in -20°C for long term use (up to 1 year) Short term (less than 1 week): 4°C. Avoid freeze-thaw cycles.

Images



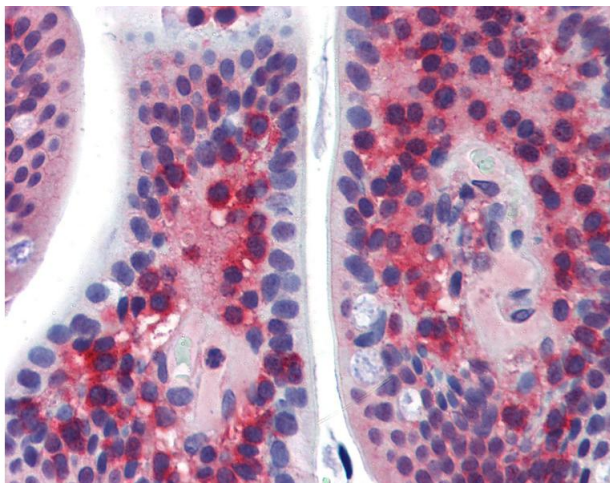
Immunohistochemistry (Paraffin-embedded Sections)

Image 1. Human Small Intestine (formalin-fixed, paraffin-embedded) stained with SSX2IP antibody ABIN462255 followed by biotinylated goat anti-rabbit IgG secondary antibody ABIN481713, alkaline phosphatase-streptavidin and chromogen.



Immunohistochemistry (Paraffin-embedded Sections)

Image 2. Human Kidney (formalin-fixed, paraffin-embedded) stained with SSX2IP antibody ABIN462255 followed by biotinylated goat anti-rabbit IgG secondary antibody ABIN481713, alkaline phosphatase-streptavidin and chromogen.



Immunohistochemistry

Image 3. Anti-SSX2IP antibody IHC of human small intestine. Immunohistochemistry of formalin-fixed, paraffin-embedded tissue after heat-induced antigen retrieval. Antibody concentration 5 ug/ml. This image was taken for the unconjugated form of this product. ...