

Datasheet for ABIN6741620
anti-Ubiquilin 1 antibody (AA 290-339)



[Go to Product page](#)

4 Images

Overview

Quantity:	100 µL
Target:	Ubiquilin 1 (UBQLN1)
Binding Specificity:	AA 290-339
Reactivity:	Human, Horse, Rabbit, Sheep, Cow, Dog, Guinea Pig, Monkey
Host:	Rabbit
Clonality:	Polyclonal
Conjugate:	This Ubiquilin 1 antibody is un-conjugated
Application:	Western Blotting (WB), Immunohistochemistry (IHC), Immunohistochemistry (Paraffin-embedded Sections) (IHC (p))

Product Details

Brand:	IHC-plus™
Immunogen:	Synthetic peptide located between aa290-339 of human UBQLN1 (Q5T6J9, NP_038466). Percent identity by BLAST analysis: Human, Gorilla, Orangutan, Gibbon, Monkey, Galago, Marmoset, Sheep, Elephant, Dog, Bovine, Rabbit, Horse, Guinea pig, Platypus (100%), Mouse, Rat, Panda, Bat (92%), Chicken (85%). Type of Immunogen: Synthetic peptide
Isotype:	IgG
Specificity:	Human UBQLN1
Predicted Reactivity:	Percent identity by BLAST analysis: Human, Sheep, Dog, Bovine, Rabbit, Horse (100%) Mouse,

Product Details

Rat, Chicken (85%).

Purification: Immunoaffinity purified

Target Details

Target: Ubiquilin 1 (UBQLN1)

Alternative Name: UBQLN1 / Ubiquilin ([UBQLN1 Products](#))

Background: Name/Gene ID: UBQLN1

Synonyms: UBQLN1, DA41, HPLIC-1, PLIC-1, Ubiquilin, UBQN, XDRP1, DSK2, PLIC1, Ubiquilin 1, Ubiquilin-1

Gene ID: 29979

NCBI Accession: [NP_038466](#)

UniProt: [Q9UMX0](#)

Application Details

Application Notes: Approved: IHC, IHC-P (5 µg/mL), WB

Usage: Immunohistochemistry: This antibody was validated for use in immunohistochemistry on a panel of 21 formalin-fixed, paraffin-embedded (FFPE) human tissues after heat induced antigen retrieval in pH 6.0 citrate buffer. After incubation with the primary antibody, slides were incubated with biotinylated secondary antibody, followed by alkaline phosphatase-streptavidin and chromogen. The stained slides were evaluated by a pathologist to confirm staining specificity. The optimal working concentration for this antibody was determined to be 5 µg/mL. ELISA titer using peptide based assay: 1:62500. Western Blot: Suggested dilution at 1 µg/mL in 5 % skim milk / PBS buffer, and HRP conjugated anti-Rabbit IgG should be diluted in 1:50000 - 100000 as second antibody.

Comment: Target Species of Antibody: Human

Restrictions: For Research Use only

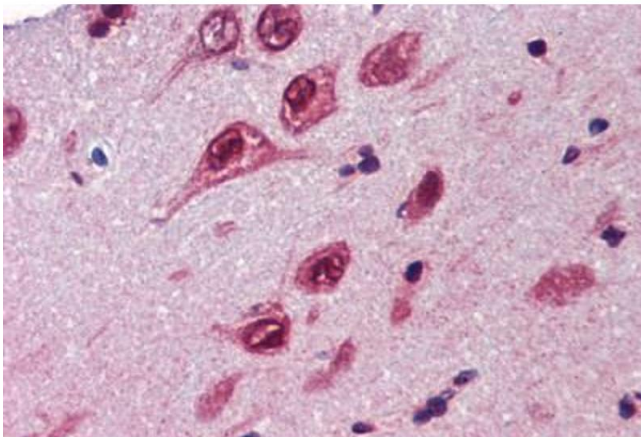
Handling

Format: Lyophilized

Handling

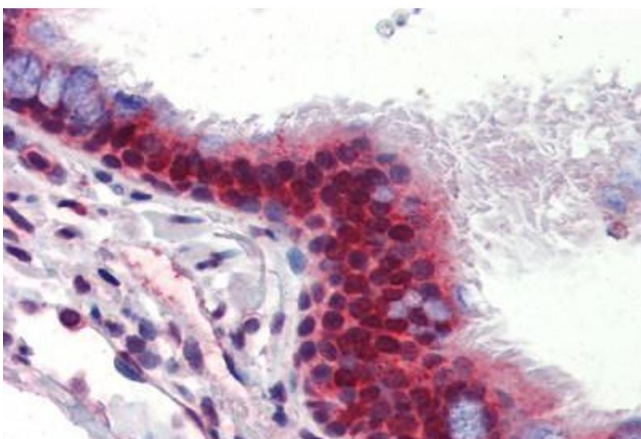
Reconstitution:	Distilled Water.
Concentration:	Lot specific
Buffer:	Lyophilized from PBS with 2 % sucrose
Handling Advice:	Avoid repeat freeze-thaw cycles.
Storage:	4 °C, -20 °C
Storage Comment:	Long term: -20°C, the use of 50% glycerol is recommended if storing aliquots in -20°C for long term use (up to 1 year) Short term (less than 1 week): 4°C. Avoid freeze-thaw cycles.

Images



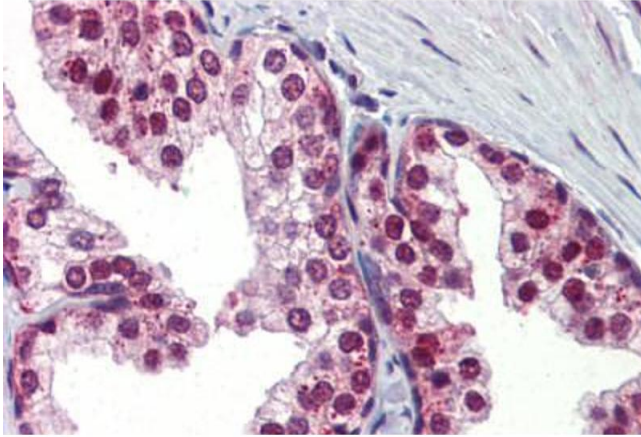
Immunohistochemistry (Paraffin-embedded Sections)

Image 1. Human Brain, Cortex (formalin-fixed, paraffin-embedded) stained with UBQLN1 antibody ABIN462260 followed by biotinylated goat anti-rabbit IgG secondary antibody ABIN481713, alkaline phosphatase-streptavidin and chromogen.



Immunohistochemistry (Paraffin-embedded Sections)

Image 2. Human Lung, Respiratory Epithelium (formalin-fixed, paraffin-embedded) stained with UBQLN1 antibody ABIN462260 followed by biotinylated goat anti-rabbit IgG secondary antibody ABIN481713, alkaline phosphatase-streptavidin and chromogen.



Immunohistochemistry (Paraffin-embedded Sections)

Image 3. Human Prostate (formalin-fixed, paraffin-embedded) stained with UBQLN1 antibody ABIN462260 followed by biotinylated goat anti-rabbit IgG secondary antibody ABIN481713, alkaline phosphatase-streptavidin and chromogen.

Please check the [product details page](#) for more images. Overall 4 images are available for ABIN6741620.