

Datasheet for ABIN6741621  
**anti-TAL1 antibody (C-Term)**

## 4 Images

[Go to Product page](#)

## Overview

Quantity:	100 µL
Target:	TAL1
Binding Specificity:	C-Term
Reactivity:	Human, Dog, Cow, Guinea Pig, Horse, Rabbit, Pig, Monkey, Bat
Host:	Rabbit
Clonality:	Polyclonal
Conjugate:	This TAL1 antibody is un-conjugated
Application:	Western Blotting (WB), Immunohistochemistry (IHC), Immunohistochemistry (Paraffin-embedded Sections) (IHC (p))

## Product Details

Brand:	IHC-plus™
Immunogen:	Synthetic peptide from C-Terminus of human TAL1 (P17542, NP_003180). Percent identity by BLAST analysis: Human, Chimpanzee, Gorilla, Gibbon, Monkey, Galago, Marmoset, Elephant, Dog, Bovine, Bat, Rabbit, Horse, Pig, Guinea pig (100%), Mouse, Rat, Hamster (92%).  Type of Immunogen: Synthetic peptide
Isotype:	IgG
Specificity:	Human TAL1
Predicted Reactivity:	Percent identity by BLAST analysis: Human, Dog, Bovine, Rabbit, Horse, Guinea pig (100%) Mouse, Rat (92%).

## Product Details

Purification: Immunoaffinity purified

## Target Details

Target: TAL1

Alternative Name: TAL1 / SCL ([TAL1 Products](#))

Background: Name/Gene ID: TAL1

Synonyms: TAL1, SCL, Stem cell protein, Tal-1, TCL5, BHLHa17, Tal-1 product

Gene ID: 6886

NCBI Accession: [NP\\_003180](#)

UniProt: [P17542](#)

Pathways: [Stem Cell Maintenance](#)

## Application Details

Application Notes: Approved: IHC, IHC-P (5 µg/mL), WB (2 µg/mL)

Usage: Immunohistochemistry: This antibody was validated for use in immunohistochemistry on a panel of 21 formalin-fixed, paraffin-embedded (FFPE) human tissues after heat induced antigen retrieval in pH 6.0 citrate buffer. After incubation with the primary antibody, slides were incubated with biotinylated secondary antibody, followed by alkaline phosphatase-streptavidin and chromogen. The stained slides were evaluated by a pathologist to confirm staining specificity. The optimal working concentration for this antibody was determined to be 5 µg/mL.

Comment: Target Species of Antibody: Human

Restrictions: For Research Use only

## Handling

Format: Lyophilized

Reconstitution: ddH2O

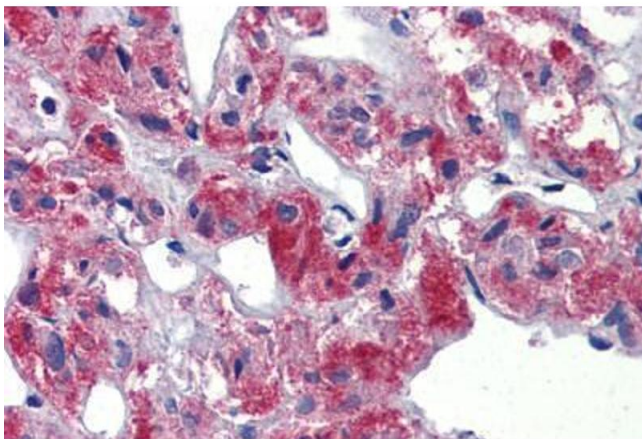
Concentration: Lot specific

Buffer: Lyophilized from PBS, 2 % sucrose.

## Handling

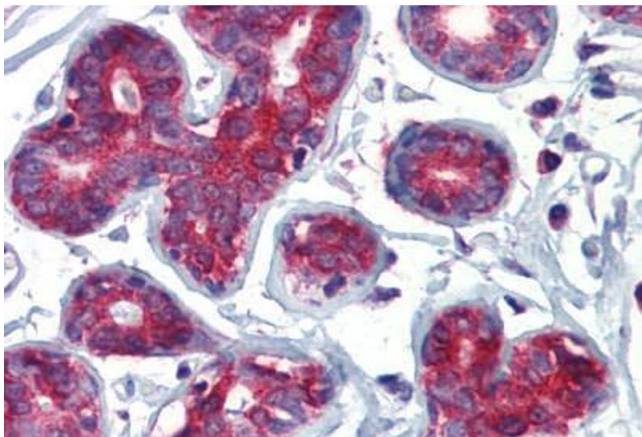
Handling Advice:	avoid freeze thaw cycles.
Storage:	4 °C,-20 °C
Storage Comment:	Long term: -20°C, the use of 50% glycerol is recommended if storing aliquots in -20°C for long term use (up to 1 year) Short term (less than 1 week): 4°C. Avoid freeze-thaw cycles.

## Images



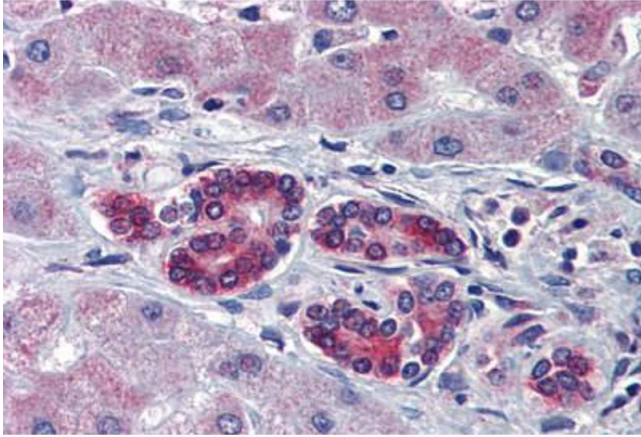
### Immunohistochemistry (Paraffin-embedded Sections)

**Image 1.** Human Adrenal (formalin-fixed, paraffin-embedded) stained with TAL1 antibody ABIN462261 followed by biotinylated goat anti-rabbit IgG secondary antibody ABIN481713, alkaline phosphatase-streptavidin and chromogen.



### Immunohistochemistry (Paraffin-embedded Sections)

**Image 2.** Human Breast (formalin-fixed, paraffin-embedded) stained with TAL1 antibody ABIN462261 followed by biotinylated goat anti-rabbit IgG secondary antibody ABIN481713, alkaline phosphatase-streptavidin and chromogen.



#### Immunohistochemistry (Paraffin-embedded Sections)

**Image 3.** Human Liver (formalin-fixed, paraffin-embedded) stained with TAL1 antibody ABIN462261 followed by biotinylated goat anti-rabbit IgG secondary antibody ABIN481713, alkaline phosphatase-streptavidin and chromogen.

Please check the [product details page](#) for more images. Overall 4 images are available for ABIN6741621.