

Datasheet for ABIN6741623
anti-EGR2 antibody (AA 397-446)[Go to Product page](#)

4 Images

Overview

Quantity:	100 µL
Target:	EGR2
Binding Specificity:	AA 397-446
Reactivity:	Human, Mouse, Horse, Cow, Monkey
Host:	Rabbit
Clonality:	Polyclonal
Conjugate:	This EGR2 antibody is un-conjugated
Application:	Western Blotting (WB), Immunohistochemistry (IHC), Immunohistochemistry (Paraffin-embedded Sections) (IHC (p))

Product Details

Brand:	IHC-plus™
Immunogen:	Synthetic peptide located between aa397-446 of human EGR2 (P11161, NP_000390). Percent identity by BLAST analysis: Human, Chimpanzee, Gorilla, Gibbon, Monkey, Marmoset, Mouse, Bovine (100%), Rat, Hamster, Elephant, Panda, Dog, Rabbit, Pig, Guinea pig (92%), Galago, Horse (85%). Type of Immunogen: Synthetic peptide
Isotype:	IgG
Specificity:	Human EGR2
Predicted Reactivity:	Percent identity by BLAST analysis: Human, Mouse, Bovine (100%) Rat, Dog, Rabbit, Pig (92%)

Product Details

	Horse (85%).
Purification:	Immunoaffinity purified

Target Details

Target:	EGR2
Alternative Name:	EGR2 (EGR2 Products)
Background:	Name/Gene ID: EGR2 Family: Transcription factor Synonyms: EGR2, CMT1D, CMT4E, Early growth response 2, E3 SUMO-protein ligase EGR2, EGR-2, KROX20, Krox-20, AT591, Zinc finger protein Krox-20
Gene ID:	1959
NCBI Accession:	NP_000390
UniProt:	P11161

Application Details

Application Notes:	Approved: IHC, IHC-P (5 µg/mL), WB (0.2 - 1 µg/mL) Usage: Immunohistochemistry: This antibody was validated for use in immunohistochemistry on a panel of 21 formalin-fixed, paraffin-embedded (FFPE) human tissues after heat induced antigen retrieval in pH 6.0 citrate buffer. After incubation with the primary antibody, slides were incubated with biotinylated secondary antibody, followed by alkaline phosphatase-streptavidin and chromogen. The stained slides were evaluated by a pathologist to confirm staining specificity. The optimal working concentration for this antibody was determined to be 5 µg/mL.
Comment:	Target Species of Antibody: Human
Restrictions:	For Research Use only

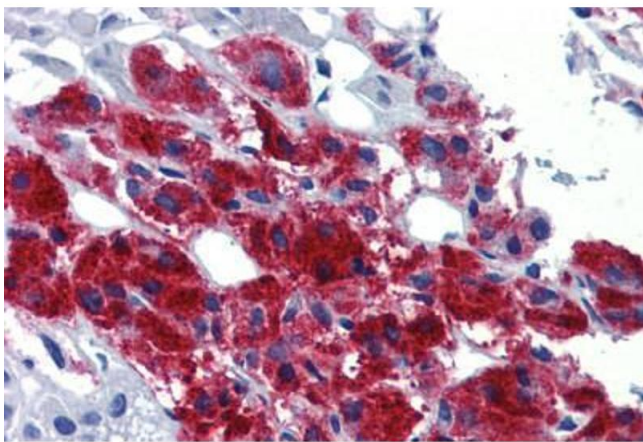
Handling

Format:	Lyophilized
Reconstitution:	Distilled water
Concentration:	Lot specific

Handling

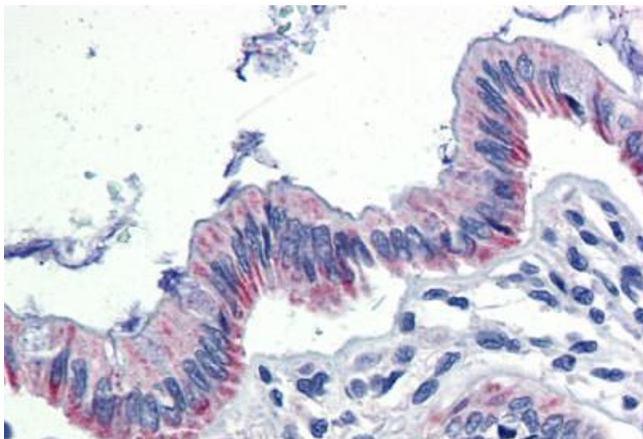
Buffer:	Lyophilized from PBS buffer with 2 % sucrose
Handling Advice:	Avoid repeat freeze-thaw cycles.
Storage:	4 °C, -20 °C
Storage Comment:	Long term: -20°C, the use of 50% glycerol is recommended if storing aliquots in -20°C for long term use (up to 1 year) Short term (less than 1 week): 4°C. Avoid freeze-thaw cycles.

Images



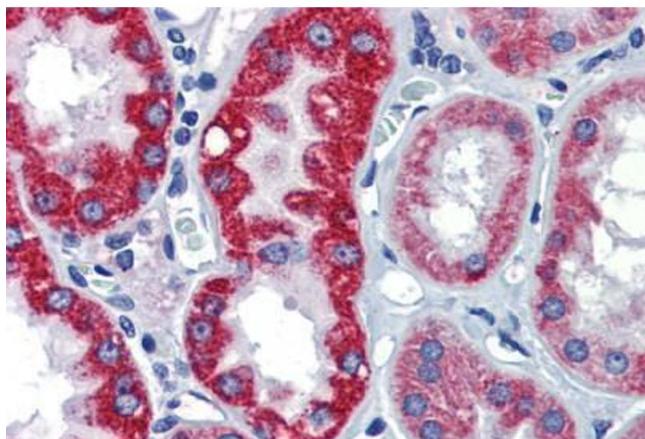
Immunohistochemistry (Paraffin-embedded Sections)

Image 1. Human Adrenal (formalin-fixed, paraffin-embedded) stained with EGR2 antibody ABIN462263 followed by biotinylated goat anti-rabbit IgG secondary antibody ABIN481713, alkaline phosphatase-streptavidin and chromogen.



Immunohistochemistry (Paraffin-embedded Sections)

Image 2. Human Colon (formalin-fixed, paraffin-embedded) stained with EGR2 antibody ABIN462263 followed by biotinylated goat anti-rabbit IgG secondary antibody ABIN481713, alkaline phosphatase-streptavidin and chromogen.



Immunohistochemistry (Paraffin-embedded Sections)

Image 3. Human Kidney (formalin-fixed, paraffin-embedded) stained with EGR2 antibody ABIN462263 followed by biotinylated goat anti-rabbit IgG secondary antibody ABIN481713, alkaline phosphatase-streptavidin and chromogen.

Please check the [product details page](#) for more images. Overall 4 images are available for ABIN6741623.