



[Go to Product page](#)

Datasheet for ABIN6741627
anti-SOX21 antibody (AA 71-120)

1 Image

Overview

Quantity:	100 µL
Target:	SOX21
Binding Specificity:	AA 71-120
Reactivity:	Human, Mouse, Cow, Pig, Monkey, Chicken
Host:	Rabbit
Clonality:	Polyclonal
Conjugate:	This SOX21 antibody is un-conjugated
Application:	Western Blotting (WB)

Product Details

Immunogen:	Synthetic peptide located between aa71-120 of human SOX21 (Q9Y651, NP_009015). Percent identity by BLAST analysis: Human, Gorilla, Monkey, Galago, Marmoset, Mouse, Bovine, Pig, Opossum, Chicken (100%), Xenopus (91%), Stickleback, Medaka, Pufferfish, Zebrafish (85%), Lizard (80%). Type of Immunogen: Synthetic peptide
Isotype:	IgG
Specificity:	Human SOX21
Predicted Reactivity:	Percent identity by BLAST analysis: Human, Mouse, Bovine, Chicken (100%) Xenopus (84%).
Purification:	Immunoaffinity purified

Target Details

Target:	SOX21
Alternative Name:	SOX21 (SOX21 Products)
Background:	Name/Gene ID: SOX21 Family: Transcription factor Synonyms: SOX21, SOXA, Transcription factor SOX-21, SRY-box 21, SOX-A, SOX25
Gene ID:	11166
NCBI Accession:	NP_009015
UniProt:	Q9Y651

Application Details

Application Notes:	Approved: WB (0.2 - 1 µg/mL) Usage: Western Blot: Suggested dilution at 1 µg/mL in 5 % skim milk / PBS buffer, and HRP conjugated anti-Rabbit IgG should be diluted in 1: 50,000 - 100,000 as second antibody. ELISA titer in peptide based assay: 1:62500.
Comment:	Target Species of Antibody: Human
Restrictions:	For Research Use only

Handling

Format:	Lyophilized
Reconstitution:	Distilled water
Concentration:	Lot specific
Buffer:	Lyophilized from PBS with 2 % sucrose
Handling Advice:	Avoid repeat freeze-thaw cycles.
Storage:	4 °C,-20 °C
Storage Comment:	Long term: -20°C, the use of 50% glycerol is recommended if storing aliquots in -20°C for long term use (up to 1 year) Short term (less than 1 week): 4°C. Avoid freeze-thaw cycles.

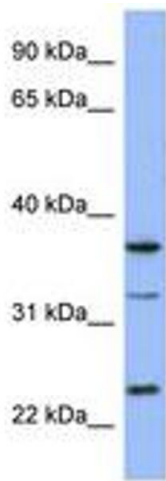


Image 1.