



[Go to Product page](#)

Datasheet for ABIN6741634  
**anti-RNF135 antibody (AA 107-156)**

1 Image

Overview

Quantity:	100 µL
Target:	RNF135
Binding Specificity:	AA 107-156
Reactivity:	Human, Rat, Dog, Monkey
Host:	Rabbit
Clonality:	Polyclonal
Conjugate:	This RNF135 antibody is un-conjugated
Application:	Western Blotting (WB)

Product Details

Immunogen:	Synthetic peptide located between aa107-156 of human RNF135 (B2R7G9, NP_922921). Percent identity by BLAST analysis: Human, Gorilla, Monkey (100%), Galago (92%), Marmoset, Rat (85%), Dog (84%), Elephant (83%).  Type of Immunogen: Synthetic peptide
Isotype:	IgG
Specificity:	Human RNF135
Predicted Reactivity:	Percent identity by BLAST analysis: Human (100%) Rat (85%) Dog (84%).
Purification:	Immunoaffinity purified

## Target Details

---

Target:	RNF135
Alternative Name:	RNF135 ( <a href="#">RNF135 Products</a> )
Background:	Name/Gene ID: RNF135  Synonyms: RNF135, L13, REUL, RIG-I E3 ubiquitin ligase, Ring finger protein 135, MMFD, Riplet
Gene ID:	84282
NCBI Accession:	<a href="#">NP_922921</a>
UniProt:	<a href="#">Q8IUD6</a>

## Application Details

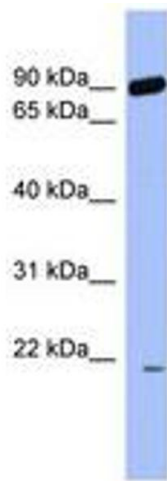
---

Application Notes:	Approved: WB (0.2 - 1 µg/mL)  Usage: Western Blot: Suggested dilution at 1 µg/mL in 5 % skim milk / PBS buffer, and HRP conjugated anti-Rabbit IgG should be diluted in 1: 50,000 - 100,000 as second antibody. ELISA titer in peptide based assay: 1:62500.
Comment:	Target Species of Antibody: Human
Restrictions:	For Research Use only

## Handling

---

Format:	Lyophilized
Reconstitution:	Distilled water
Concentration:	Lot specific
Buffer:	Lyophilized from PBS with 2 % sucrose
Handling Advice:	Avoid repeat freeze-thaw cycles.
Storage:	4 °C,-20 °C
Storage Comment:	Long term: -20°C, the use of 50% glycerol is recommended if storing aliquots in -20°C for long term use (up to 1 year)  Short term (less than 1 week): 4°C. Avoid freeze-thaw cycles.



**Image 1.**