



[Go to Product page](#)

Datasheet for ABIN6741639

anti-RAD51AP1 antibody (AA 215-264)

1 Image

Overview

Quantity:	100 µL
Target:	RAD51AP1
Binding Specificity:	AA 215-264
Reactivity:	Human, Dog, Horse, Rabbit, Monkey
Host:	Rabbit
Clonality:	Polyclonal
Conjugate:	This RAD51AP1 antibody is un-conjugated
Application:	Western Blotting (WB)

Product Details

Immunogen:	Synthetic peptide located between aa215-264 of human RAD51AP1 (Q96B01, NP_006470). Percent identity by BLAST analysis: Human, Gorilla, Gibbon, Monkey, Galago, Rabbit (100%), Pig (92%), Elephant, Panda, Dog, Bat (85%). Type of Immunogen: Synthetic peptide
Isotype:	IgG
Specificity:	Human RAD51AP1
Predicted Reactivity:	Percent identity by BLAST analysis: Human, Rabbit (100%) Pig (92%) Dog (85%).
Purification:	Immunoaffinity purified

Target Details

Target:	RAD51AP1
Alternative Name:	RAD51AP1 (RAD51AP1 Products)
Background:	Name/Gene ID: RAD51AP1 Synonyms: RAD51AP1, PIR51, RAD51-associated protein 1, RAD51 associated protein 1, RAD51-interacting protein
Gene ID:	10635
NCBI Accession:	NP_006470
UniProt:	Q96B01

Application Details

Application Notes:	Approved: WB (0.2 - 1 µg/mL) Usage: Western Blot: Suggested dilution at 1 µg/mL in 5 % skim milk / PBS buffer, and HRP conjugated anti-Rabbit IgG should be diluted in 1: 50,000 - 100,000 as second antibody. ELISA titer in peptide based assay: 1:62500.
Comment:	Target Species of Antibody: Human
Restrictions:	For Research Use only

Handling

Format:	Lyophilized
Reconstitution:	Distilled water
Concentration:	Lot specific
Buffer:	Lyophilized from PBS with 2 % sucrose
Handling Advice:	Avoid repeat freeze-thaw cycles.
Storage:	4 °C,-20 °C
Storage Comment:	Long term: -20°C, the use of 50% glycerol is recommended if storing aliquots in -20°C for long term use (up to 1 year) Short term (less than 1 week): 4°C. Avoid freeze-thaw cycles.

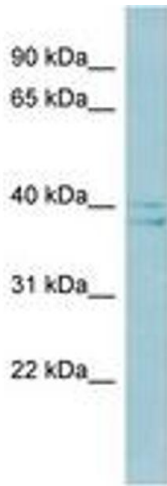


Image 1.