

Datasheet for ABIN6741643

anti-MYL3/CMLC1 antibody (AA 35-84)[Go to Product page](#)**1** Image

Overview

Quantity:	100 µL
Target:	MYL3/CMLC1 (MYL3)
Binding Specificity:	AA 35-84
Reactivity:	Human, Mouse, Rat, Guinea Pig, Horse, Cow, Rabbit, Dog, Hamster, Bat, Pig, Drosophila melanogaster
Host:	Rabbit
Clonality:	Polyclonal
Conjugate:	This MYL3/CMLC1 antibody is un-conjugated
Application:	Western Blotting (WB)

Product Details

Immunogen:	Synthetic peptide located between aa35-84 of human MYL3 (Q5R887, NP_000249). Percent identity by BLAST analysis: Human, Chimpanzee, Gorilla, Orangutan, Gibbon, Monkey, Galago, Mouse, Rat, Hamster, Elephant, Dog, Bovine, Bat, Rabbit, Horse, Pig, Opossum, Guinea pig, Drosophila (100%), Marmoset (92%), Turkey, Zebra finch, Chicken (85%), Frog (84%), Salmon, Stickleback (83%). Type of Immunogen: Synthetic peptide
Isotype:	IgG
Specificity:	Human MYL3
Predicted Reactivity:	Percent identity by BLAST analysis: Human, Mouse, Rat, Dog, Bovine, Rabbit, Guinea pig (100%)

Product Details

Chicken (85%).

Purification: Immunoaffinity purified

Target Details

Target: MYL3/CMLC1 (MYL3)

Alternative Name: MYL3 ([MYL3 Products](#))

Background: Name/Gene ID: MYL3

Synonyms: MYL3, CMH8, Cardiac myosin light chain 1, CMLC1, Myosin, light chain 3, alkali, Myosin light chain 3, Ventricular, skeletal, slow, VLC1, MLC1SB, MLC1V

Gene ID: 4634

NCBI Accession: [NP_000249](#)

UniProt: [P08590](#)

Application Details

Application Notes: Approved: WB (0.2 - 1 µg/mL)

Usage: Western Blot: Suggested dilution at 1 µg/mL in 5 % skim milk / PBS buffer, and HRP conjugated anti-Rabbit IgG should be diluted in 1: 50,000 - 100,000 as second antibody. ELISA titer in peptide based assay: 1:1562500.

Comment: Target Species of Antibody: Human

Restrictions: For Research Use only

Handling

Format: Lyophilized

Reconstitution: Distilled water

Concentration: Lot specific

Buffer: Lyophilized from PBS with 2 % sucrose

Handling Advice: Avoid repeat freeze-thaw cycles.

Storage: 4 °C, -20 °C

Handling

Storage Comment: Long term: -20°C, the use of 50% glycerol is recommended if storing aliquots in -20°C for long term use (up to 1 year)

Short term (less than 1 week): 4°C. Avoid freeze-thaw cycles.

Images

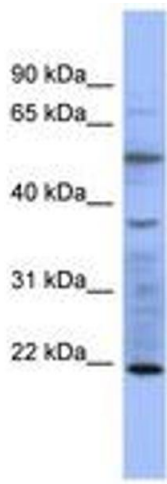


Image 1.