

Datasheet for ABIN6741648
anti-MASP2 antibody (AA 35-84)[Go to Product page](#)

1 Image

Overview

Quantity:	100 µL
Target:	MASP2
Binding Specificity:	AA 35-84
Reactivity:	Human, Mouse, Cow, Horse, Dog, Guinea Pig, Bat, Monkey
Host:	Rabbit
Clonality:	Polyclonal
Conjugate:	This MASP2 antibody is un-conjugated
Application:	Western Blotting (WB)

Product Details

Immunogen:	Synthetic peptide located between aa35-84 of human MASP2 (O00187, NP_006601). Percent identity by BLAST analysis: Human, Chimpanzee, Gorilla, Monkey, Galago, Marmoset, Mouse, Elephant, Dog, Bovine, Bat, Horse, Guinea pig (100%), Gibbon, Rat, Opossum (92%), Panda (91%), Chicken (83%). Type of Immunogen: Synthetic peptide
Isotype:	IgG
Specificity:	Human MASP2
Predicted Reactivity:	Percent identity by BLAST analysis: Human, Mouse, Dog, Bovine, Horse, Guinea pig (100%) Rat (92%).
Purification:	Immunoaffinity purified

Target Details

Target:	MASP2
Alternative Name:	MASP2 / MASP-2 (MASP2 Products)
Background:	Name/Gene ID: MASP2 Subfamily: Serine S1 Family: Protease Synonyms: MASP2, MASP1P1, MASP2-PEN, Small MBL-associated protein, MAP19, MASP-2, SMAP
Gene ID:	10747
NCBI Accession:	NP_006601
UniProt:	O00187
Pathways:	Complement System

Application Details

Application Notes:	Approved: WB (0.2 - 1 µg/mL) Usage: Western Blot: Suggested dilution at 1 µg/mL in 5 % skim milk / PBS buffer, and HRP conjugated anti-Rabbit IgG should be diluted in 1: 50,000 - 100,000 as second antibody. ELISA titer in peptide based assay: 1:62500.
Comment:	Target Species of Antibody: Human
Restrictions:	For Research Use only

Handling

Format:	Lyophilized
Reconstitution:	Distilled water
Concentration:	Lot specific
Buffer:	Lyophilized from PBS with 2 % sucrose
Handling Advice:	Avoid repeat freeze-thaw cycles.
Storage:	4 °C,-20 °C
Storage Comment:	Long term: -20°C, the use of 50% glycerol is recommended if storing aliquots in -20°C for long

Handling

term use (up to 1 year)
Short term (less than 1 week): 4°C. Avoid freeze-thaw cycles.

Images

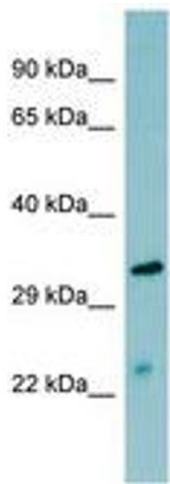


Image 1.