



Datasheet for ABIN6741651  
**anti-SLC27A5 antibody (AA 611-660)**



[Go to Product page](#)

1 Image

Overview

Quantity:	100 µL
Target:	SLC27A5
Binding Specificity:	AA 611-660
Reactivity:	Human, Mouse, Rat, Monkey, Cow, Horse
Host:	Rabbit
Clonality:	Polyclonal
Conjugate:	This SLC27A5 antibody is un-conjugated
Application:	Western Blotting (WB)

Product Details

Immunogen:	Synthetic peptide located between aa611-660 of human SLC27A5 (Q9Y2P5, NP_036386). Percent identity by BLAST analysis: Human, Chimpanzee, Gibbon, Monkey, Marmoset, Mouse, Rat (100%), Galago, Panda, Bat, Rabbit (92%), Bovine (85%), Horse (84%).  Type of Immunogen: Synthetic peptide
Isotype:	IgG
Specificity:	Human SLC27A5
Predicted Reactivity:	Percent identity by BLAST analysis: Mouse (100%) Rabbit (92%) Bovine (85%) Horse (84%).
Purification:	Immunoaffinity purified

## Target Details

---

Target:	SLC27A5
Alternative Name:	SLC27A5 / BACS ( <a href="#">SLC27A5 Products</a> )
Background:	Name/Gene ID: SLC27A5 Subfamily: Fatty acid transporter Family: Transporter  Synonyms: SLC27A5, ACSB, ACSVL6, Bile acid-CoA ligase, Bile acyl-CoA synthetase, BACS, BAL, BA-CoA ligase, Cholate--CoA ligase, FACVL3, Fatty acid transport protein 5, FATP5, VLACS-related, VLCS-H2, VLACSR, VLCSH2, FATP-5
Gene ID:	10998
NCBI Accession:	<a href="#">NP_036386</a>
UniProt:	<a href="#">Q9Y2P5</a>

## Application Details

---

Application Notes:	Approved: WB (0.2 - 1 µg/mL)  Usage: Western Blot: Suggested dilution at 1 µg/mL in 5 % skim milk / PBS buffer, and HRP conjugated anti-Rabbit IgG should be diluted in 1: 50,000 - 100,000 as second antibody. ELISA titer in peptide based assay: 1:312500.
Comment:	Target Species of Antibody: Human
Restrictions:	For Research Use only

## Handling

---

Format:	Lyophilized
Reconstitution:	Distilled water
Concentration:	Lot specific
Buffer:	Lyophilized from PBS with 2 % sucrose
Handling Advice:	Avoid repeat freeze-thaw cycles.
Storage:	4 °C,-20 °C
Storage Comment:	Long term: -20°C, the use of 50% glycerol is recommended if storing aliquots in -20°C for long

## Handling

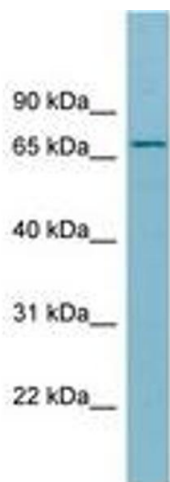
---

term use (up to 1 year)

Short term (less than 1 week): 4°C. Avoid freeze-thaw cycles.

## Images

---



**Image 1.**