

Datasheet for ABIN6741658
anti-PIM1 antibody (N-Term)



[Go to Product page](#)

1 Image

Overview

Quantity:	100 µL
Target:	PIM1
Binding Specificity:	N-Term
Reactivity:	Human, Mouse, Rat, Horse, Sheep, Cow, Dog, Rabbit, Guinea Pig, Pig, Monkey, Bat
Host:	Rabbit
Clonality:	Polyclonal
Conjugate:	This PIM1 antibody is un-conjugated
Application:	Western Blotting (WB)

Product Details

Immunogen:	Synthetic peptide from N-Terminus of human PIM1 (P11309-2, NP_002639). Percent identity by BLAST analysis: Human, Chimpanzee, Gorilla, Gibbon, Monkey, Galago, Marmoset, Mouse, Rat, Sheep, Panda, Dog, Bovine, Bat, Rabbit, Horse, Pig, Guinea pig (100%), Elephant, Cat (92%). Type of Immunogen: Synthetic peptide
Isotype:	IgG
Specificity:	Human PIM1
Predicted Reactivity:	Percent identity by BLAST analysis: Human, Mouse, Rat, Sheep, Dog, Bovine, Rabbit, Horse, Pig, Guinea pig (100%).
Purification:	Immunoaffinity purified

Target Details

Target:	PIM1
Alternative Name:	PIM1 / Pim-1 (PIM1 Products)
Background:	Name/Gene ID: PIM1 Subfamily: PIM Family: Protein Kinase Synonyms: PIM1, Pim-1 kinase 44 kDa isoform, Proviral integration site 1, Oncogene PIM1, PIM, Pim-1, Pim-1 oncogene
Gene ID:	5292
NCBI Accession:	NP_002639
UniProt:	P11309
Pathways:	Glycosaminoglycan Metabolic Process

Application Details

Application Notes:	Approved: WB (0.2 - 1 µg/mL) Usage: Western Blot: Suggested dilution at 1 µg/mL in 5 % skim milk / PBS buffer, and HRP conjugated anti-Rabbit IgG should be diluted in 1: 50,000 - 100,000 as second antibody. ELISA titer in peptide based assay: 1:62500.
Comment:	Target Species of Antibody: Human
Restrictions:	For Research Use only

Handling

Format:	Lyophilized
Reconstitution:	Distilled water
Concentration:	Lot specific
Buffer:	Lyophilized from PBS with 2 % sucrose
Handling Advice:	Avoid repeat freeze-thaw cycles.
Storage:	4 °C,-20 °C
Storage Comment:	Long term: -20°C, the use of 50% glycerol is recommended if storing aliquots in -20°C for long

Handling

term use (up to 1 year)

Short term (less than 1 week): 4°C. Avoid freeze-thaw cycles.

Images

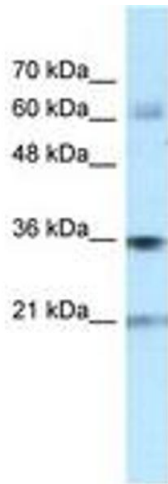


Image 1.