

Datasheet for ABIN6741659
anti-PKC gamma antibody (AA 539-588)



[Go to Product page](#)

1 Image

Overview

Quantity:	100 µL
Target:	PKC gamma (PRKCG)
Binding Specificity:	AA 539-588
Reactivity:	Human, Mouse, Rat, Rabbit, Cow, Dog, Guinea Pig, Horse, Monkey, Zebrafish (Danio rerio), Pig, Bat
Host:	Rabbit
Clonality:	Polyclonal
Conjugate:	This PKC gamma antibody is un-conjugated
Application:	Western Blotting (WB)

Product Details

Immunogen:	Synthetic peptide located between aa539-588 of human PRKCG (P05129, NP_002730). Percent identity by BLAST analysis: Human, Chimpanzee, Gorilla, Gibbon, Baboon, Monkey, Galago, Marmoset, Mouse, Rat, Shrew, Elephant, Panda, Dog, Bovine, Bat, Rabbit, Horse, Pig, Guinea pig, Armadillo (100%), Xenopus (92%), Zebrafish (85%). Type of Immunogen: Synthetic peptide
Isotype:	IgG
Specificity:	Human PRKCG / PKC-Gamma
Predicted Reactivity:	Percent identity by BLAST analysis: Human, Dog, Bovine, Horse (100%) Zebrafish (85%).
Purification:	Immunoaffinity purified

Target Details

Target:	PKC gamma (PRKCG)
Alternative Name:	PRKCG / PKC-Gamma (PRKCG Products)
Background:	Name/Gene ID: PRKCG Subfamily: PKC Family: Protein Kinase Synonyms: PRKCG, PKC-gamma, PRKC-gamma, Protein kinase C gamma, Protein kinase C gamma type, PKC Gamma, PKCC, PKCG, Pkcgamma, Protein kinase C, gamma, SCA14
Gene ID:	5582
NCBI Accession:	NP_002730
UniProt:	P05129
Pathways:	WNT Signaling , EGFR Signaling Pathway , Neurotrophin Signaling Pathway , Thyroid Hormone Synthesis , Myometrial Relaxation and Contraction , G-protein mediated Events , Positive Regulation of Response to DNA Damage Stimulus , Interaction of EGFR with phospholipase C-gamma , Thromboxane A2 Receptor Signaling , VEGF Signaling

Application Details

Application Notes:	Approved: WB (0.2 - 1 µg/mL) Usage: Western Blot: Suggested dilution at 1 µg/mL in 5 % skim milk / PBS buffer, and HRP conjugated anti-Rabbit IgG should be diluted in 1: 50,000 - 100,000 as second antibody. ELISA titer in peptide based assay: 1:312500.
Comment:	Target Species of Antibody: Human
Restrictions:	For Research Use only

Handling

Format:	Lyophilized
Reconstitution:	Distilled water
Concentration:	Lot specific
Buffer:	Lyophilized from PBS with 2 % sucrose
Handling Advice:	Avoid repeat freeze-thaw cycles.

Handling

Storage: 4 °C, -20 °C

Storage Comment: Long term: -20°C, the use of 50% glycerol is recommended if storing aliquots in -20°C for long term use (up to 1 year)
Short term (less than 1 week): 4°C. Avoid freeze-thaw cycles.

Images

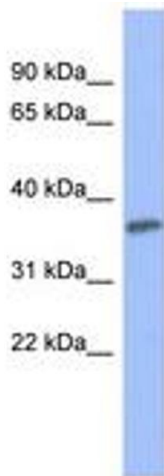


Image 1.