



Datasheet for ABIN6741665 **anti-MAPK12 antibody (AA 35-84)**



[Go to Product page](#)

1 Image

Overview

Quantity:	100 µL
Target:	MAPK12
Binding Specificity:	AA 35-84
Reactivity:	Human, Mouse, Rat, Rabbit, Guinea Pig, Monkey, Cow, Horse, Pig, Xenopus laevis
Host:	Rabbit
Clonality:	Polyclonal
Conjugate:	This MAPK12 antibody is un-conjugated
Application:	Western Blotting (WB)

Product Details

Immunogen: Synthetic peptide located between aa35-84 of human MAPK12 (P53778, NP_002960). Percent identity by BLAST analysis: Human, Gorilla, Monkey, Galago, Marmoset, Mouse, Rat, Panda, Bovine, Rabbit, Horse, Pig, Opossum, Guinea pig, Zebra finch, Xenopus, Catfish (100%), Gibbon (93%), Chimpanzee, Sheep, Elephant, Dog, Bat, Chicken, Platypus, Lizard, Salmon, Stickleback, Zebrafish (92%), Goat, Turkey (85%).

Type of Immunogen: Synthetic peptide

Isotype: IgG

Specificity: Human MAPK12 / ERK5

Predicted Reactivity: Percent identity by BLAST analysis: Human, Bovine, Rabbit, Horse, Pig, Guinea pig, Xenopus (100%) Dog, Zebrafish (92%).

Product Details

Purification: Immunoaffinity purified

Target Details

Target: MAPK12

Alternative Name: MAPK12 / ERK6 / SAPK3 ([MAPK12 Products](#))

Background: Name/Gene ID: MAPK12
Subfamily: MAPK
Family: Protein Kinase

Synonyms: MAPK12, ERK5, ERK6, ERK-6, MAP kinase 12, MAPK 12, MAP kinase p38 gamma, SAPK3, p38-gamma, p38GAMMA, SAPK-3, ERK3, PRKM12

Gene ID: 6300

NCBI Accession: [NP_002960](#)

UniProt: [P53778](#)

Pathways: [MAPK Signaling](#), [Neurotrophin Signaling Pathway](#), [Regulation of Muscle Cell Differentiation](#), [Hepatitis C](#), [BCR Signaling](#), [S100 Proteins](#)

Application Details

Application Notes: Approved: WB (0.2 - 1 µg/mL)

Usage: Western Blot: Suggested dilution at 1 µg/mL in 5 % skim milk / PBS buffer, and HRP conjugated anti-Rabbit IgG should be diluted in 1: 50,000 - 100,000 as second antibody. ELISA titer in peptide based assay: 1:62500.

Comment: Target Species of Antibody: Human

Restrictions: For Research Use only

Handling

Format: Lyophilized

Reconstitution: Distilled water

Concentration: Lot specific

Buffer: Lyophilized from PBS with 2 % sucrose

Handling

Handling Advice: Avoid repeat freeze-thaw cycles.

Storage: 4 °C,-20 °C

Storage Comment: Long term: -20°C, the use of 50% glycerol is recommended if storing aliquots in -20°C for long term use (up to 1 year)
Short term (less than 1 week): 4°C. Avoid freeze-thaw cycles.

Images

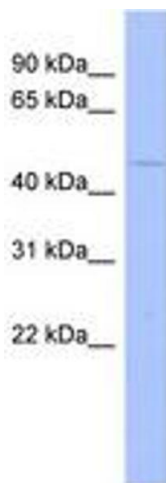


Image 1.