



[Go to Product page](#)

Datasheet for ABIN6741682
anti-NTSR1 antibody (AA 35-84)

1 Image

Overview

Quantity:	100 µL
Target:	NTSR1
Binding Specificity:	AA 35-84
Reactivity:	Human, Mouse, Guinea Pig, Horse
Host:	Rabbit
Clonality:	Polyclonal
Conjugate:	This NTSR1 antibody is un-conjugated
Application:	Western Blotting (WB)

Product Details

Immunogen:	Synthetic peptide located between aa35-84 of human NTSR1 (P30989, NP_002522). Percent identity by BLAST analysis: Human, Chimpanzee, Gorilla, Gibbon, Monkey, Guinea pig (100%), Galago, Marmoset, Elephant, Panda, Dog, Bovine (92%), Turkey, Chicken, Platypus, Lizard (90%), Mouse, Rat, Horse, Frog, Zebrafish (85%), Opossum (81%). Type of Immunogen: Synthetic peptide
Isotype:	IgG
Specificity:	Human NTSR1
Predicted Reactivity:	Percent identity by BLAST analysis: Guinea pig (100%) Dog, Bovine (92%) Chicken (90%) Mouse, Horse (85%).
Purification:	Immunoaffinity purified

Target Details

Target:	NTSR1
Alternative Name:	NTSR1 / NTR (NTSR1 Products)
Background:	Name/Gene ID: NTSR1 Subfamily: Neurotensin Family: GPCR Synonyms: NTSR1, Neurotensin receptor type 1, NT-1r, NT1 receptor, NTR, NTS1, Neurotensin receptor 1, NT-R-1, NTR1, NTRH, NTRR, Neurotensin receptor ntr1, NTS-1, Neurotensin type 1 receptor, NT receptor-1, RNTR1
Gene ID:	4923
NCBI Accession:	NP_002522
UniProt:	P30989

Application Details

Application Notes:	Approved: WB (0.2 - 1 µg/mL) Usage: Western Blot: Suggested dilution at 1 µg/mL in 5 % skim milk / PBS buffer, and HRP conjugated anti-Rabbit IgG should be diluted in 1: 50,000 - 100,000 as second antibody. ELISA titer in peptide based assay: 1:312500.
Comment:	Target Species of Antibody: Human
Restrictions:	For Research Use only

Handling

Format:	Lyophilized
Reconstitution:	Distilled water
Concentration:	Lot specific
Buffer:	Lyophilized from PBS with 2 % sucrose
Handling Advice:	Avoid repeat freeze-thaw cycles.
Storage:	4 °C,-20 °C
Storage Comment:	Long term: -20°C, the use of 50% glycerol is recommended if storing aliquots in -20°C for long

Handling

term use (up to 1 year)

Short term (less than 1 week): 4°C. Avoid freeze-thaw cycles.

Images

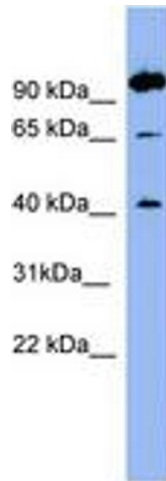


Image 1.