

Datasheet for ABIN6741685
anti-SLC10A1 antibody (AA 107-156)



[Go to Product page](#)

1 Image

Overview

Quantity:	100 µL
Target:	SLC10A1
Binding Specificity:	AA 107-156
Reactivity:	Human, Mouse, Rat, Dog, Guinea Pig, Bat
Host:	Rabbit
Clonality:	Polyclonal
Conjugate:	This SLC10A1 antibody is un-conjugated
Application:	Western Blotting (WB)

Product Details

Immunogen:	Synthetic peptide located between aa107-156 of human SLC10A1 (Q14973, NP_003040). Percent identity by BLAST analysis: Human, Chimpanzee, Gibbon, Monkey, Mouse, Rat, Panda, Dog, Bat, Guinea pig (100%), Marmoset, Bovine, Rabbit, Horse, Pig (92%), Galago (85%). Type of Immunogen: Synthetic peptide
Isotype:	IgG
Specificity:	Human SLC10A1
Predicted Reactivity:	Percent identity by BLAST analysis: Human, Mouse, Dog, Guinea pig (100%) Bovine, Rabbit, Pig (92%).
Purification:	Immunoaffinity purified

Target Details

Target:	SLC10A1
Alternative Name:	SLC10A1 / NTCP (SLC10A1 Products)
Background:	Name/Gene ID: SLC10A1 Subfamily: Bile acid:sodium symporter Family: Transporter Synonyms: SLC10A1, Growth-inhibiting protein 29, Na(+)/bile acid cotransporter, Sodium/bile acid cotransporter, Na+/bile acid cotransporter, NTCP, NTCP1
Gene ID:	6554
NCBI Accession:	NP_003040
UniProt:	Q14973

Application Details

Application Notes:	Approved: WB (0.2 - 1 µg/mL) Usage: Western Blot: Suggested dilution at 1 µg/mL in 5 % skim milk / PBS buffer, and HRP conjugated anti-Rabbit IgG should be diluted in 1: 50,000 - 100,000 as second antibody. ELISA titer in peptide based assay: 1:312500.
Comment:	Target Species of Antibody: Human
Restrictions:	For Research Use only

Handling

Format:	Lyophilized
Reconstitution:	Distilled water
Concentration:	Lot specific
Buffer:	Lyophilized from PBS with 2 % sucrose
Handling Advice:	Avoid repeat freeze-thaw cycles.
Storage:	4 °C,-20 °C
Storage Comment:	Long term: -20°C, the use of 50% glycerol is recommended if storing aliquots in -20°C for long term use (up to 1 year)

Handling

Short term (less than 1 week): 4°C. Avoid freeze-thaw cycles.

Images

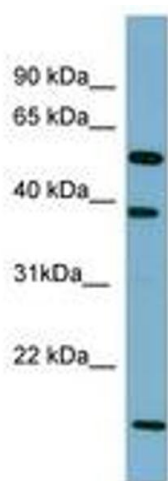


Image 1.