

Datasheet for ABIN6741691  
**anti-SMR3A antibody (AA 71-120)**



[Go to Product page](#)

1 Image

## Overview

Quantity:	100 µL
Target:	SMR3A
Binding Specificity:	AA 71-120
Reactivity:	Human
Host:	Rabbit
Clonality:	Polyclonal
Conjugate:	This SMR3A antibody is un-conjugated
Application:	Western Blotting (WB)

## Product Details

Immunogen:	Synthetic peptide located between aa71-120 of human SMR3A (Q99954, NP_036522). Percent identity by BLAST analysis: Human, Gorilla, Gibbon (100%), Marmoset (91%).  Type of Immunogen: Synthetic peptide
Isotype:	IgG
Specificity:	Human SMR3A
Predicted Reactivity:	Percent identity by BLAST analysis: Human (100%).
Purification:	Immunoaffinity purified

## Target Details

Target:	SMR3A
---------	-------

## Target Details

---

Alternative Name:	SMR3A / PBI ( <a href="#">SMR3A Products</a> )
Background:	Name/Gene ID: SMR3A  Synonyms: SMR3A, P-B1, PROL5, Proline-rich protein PBI, PRL5, Proline-rich protein 5, PBI, Proline rich 5 (salivary), Proline- rich protein 5
Gene ID:	26952
NCBI Accession:	<a href="#">NP_036522</a>

## Application Details

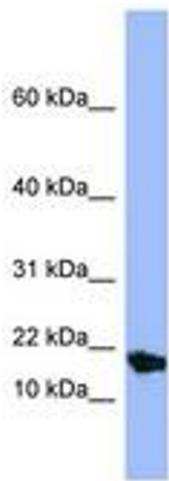
---

Application Notes:	Approved: WB (0.2 - 1 µg/mL)  Usage: Western Blot: Suggested dilution at 1 µg/mL in 5 % skim milk / PBS buffer, and HRP conjugated anti-Rabbit IgG should be diluted in 1: 50,000 - 100,000 as second antibody. ELISA titer in peptide based assay: 1:312500.
Comment:	Target Species of Antibody: Human
Restrictions:	For Research Use only

## Handling

---

Format:	Lyophilized
Reconstitution:	Distilled water
Concentration:	Lot specific
Buffer:	Lyophilized from PBS with 2 % sucrose
Handling Advice:	Avoid repeat freeze-thaw cycles.
Storage:	4 °C,-20 °C
Storage Comment:	Long term: -20°C, the use of 50% glycerol is recommended if storing aliquots in -20°C for long term use (up to 1 year)  Short term (less than 1 week): 4°C. Avoid freeze-thaw cycles.



**Image 1.**