

Datasheet for ABIN6741709
anti-RRAD antibody (AA 143-192)[Go to Product page](#)

1 Image

Overview

Quantity:	100 µL
Target:	RRAD
Binding Specificity:	AA 143-192
Reactivity:	Human, Cow, Dog, Rabbit, Bat, Monkey
Host:	Rabbit
Clonality:	Polyclonal
Conjugate:	This RRAD antibody is un-conjugated
Application:	Western Blotting (WB)

Product Details

Immunogen:	Synthetic peptide located between aa143-192 of human RRAD (P55042, NP_004156). Percent identity by BLAST analysis: Human, Gorilla, Gibbon, Monkey, Galago, Marmoset, Elephant, Dog, Bovine, Bat, Rabbit (100%), Mouse, Rat, Hamster, Horse, Opossum, Guinea pig, Turkey, Zebra finch, Chicken, Platypus, Xenopus, Newt, Stickleback, Pufferfish, Zebrafish (92%). Type of Immunogen: Synthetic peptide
Isotype:	IgG
Specificity:	Human RRAD
Predicted Reactivity:	Percent identity by BLAST analysis: Dog, Bovine, Rabbit (100%) Human, Mouse, Rat, Horse, Chicken, Xenopus, Zebrafish (92%).
Purification:	Immunoaffinity purified

Target Details

Target:	RRAD
Alternative Name:	RRAD (RRAD Products)
Background:	Name/Gene ID: RRAD Family: Ras GTPase superfamily IPR001806 Synonyms: RRAD, GTP-binding protein RAD, Ras associated with diabetes, REM3, RAD
Gene ID:	6236
NCBI Accession:	NP_004156
UniProt:	P55042

Application Details

Application Notes:	Approved: WB (0.2 - 1 µg/mL) Usage: Western Blot: Suggested dilution at 1 µg/mL in 5 % skim milk / PBS buffer, and HRP conjugated anti-Rabbit IgG should be diluted in 1: 50,000 - 100,000 as second antibody. ELISA titer in peptide based assay: 1:1562500.
Comment:	Target Species of Antibody: Human
Restrictions:	For Research Use only

Handling

Format:	Lyophilized
Reconstitution:	Distilled water
Concentration:	Lot specific
Buffer:	Lyophilized from PBS with 2 % sucrose
Handling Advice:	Avoid repeat freeze-thaw cycles.
Storage:	4 °C,-20 °C
Storage Comment:	Long term: -20°C, the use of 50% glycerol is recommended if storing aliquots in -20°C for long term use (up to 1 year) Short term (less than 1 week): 4°C. Avoid freeze-thaw cycles.

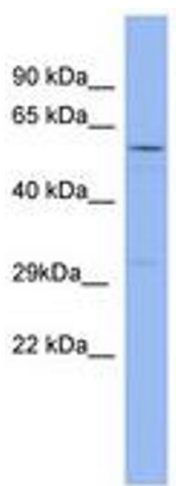


Image 1.