



[Go to Product page](#)

Datasheet for ABIN6741714  
**anti-MAGEB1 antibody (C-Term)**

1 Image

Overview

Quantity:	100 µL
Target:	MAGEB1
Binding Specificity:	C-Term
Reactivity:	Human, Mouse, Dog, Rabbit, Horse, Rat, Pig, Bat
Host:	Rabbit
Clonality:	Polyclonal
Conjugate:	This MAGEB1 antibody is un-conjugated
Application:	Western Blotting (WB)

Product Details

Immunogen:	Synthetic peptide from C-Terminus of human MAGEB1 (P43366, NP_803134). Percent identity by BLAST analysis: Human, Chimpanzee, Gorilla, Gibbon, Monkey, Mouse, Rat, Panda, Bat, Rabbit, Horse, Pig (100%), Marmoset, Hamster, Bovine, Guinea pig (92%), Galago (90%), Elephant, Dog, Cat (85%).  Type of Immunogen: Synthetic peptide
Isotype:	IgG
Specificity:	Human MAGEB1
Predicted Reactivity:	Percent identity by BLAST analysis: Human, Rabbit, Horse (100%) Bovine (92%) Mouse, Dog (85%) Pig (84%).
Purification:	Immunoaffinity purified

## Target Details

---

Target:	MAGEB1
Alternative Name:	MAGEB1 ( <a href="#">MAGEB1 Products</a> )
Background:	Name/Gene ID: MAGEB1  Synonyms: MAGEB1, Cancer/testis antigen 3.1, DAM10, CT3.1, MAGE-Xp, MAGEXP, Melanoma-associated antigen B1, MAGE-B1 antigen, MAGEL1, Melanoma antigen family B, 1, MAGE-XP antigen
Gene ID:	4112
NCBI Accession:	<a href="#">NP_803134</a>
UniProt:	<a href="#">P43366</a>

## Application Details

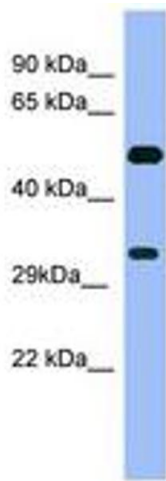
---

Application Notes:	Approved: WB (0.2 - 1 µg/mL)  Usage: Western Blot: Suggested dilution at 1 µg/mL in 5 % skim milk / PBS buffer, and HRP conjugated anti-Rabbit IgG should be diluted in 1: 50,000 - 100,000 as second antibody. ELISA titer in peptide based assay: 1:312500.
Comment:	Target Species of Antibody: Human
Restrictions:	For Research Use only

## Handling

---

Format:	Lyophilized
Reconstitution:	Distilled water
Concentration:	Lot specific
Buffer:	Lyophilized from PBS with 2 % sucrose
Handling Advice:	Avoid repeat freeze-thaw cycles.
Storage:	4 °C, -20 °C
Storage Comment:	Long term: -20°C, the use of 50% glycerol is recommended if storing aliquots in -20°C for long term use (up to 1 year)  Short term (less than 1 week): 4°C. Avoid freeze-thaw cycles.



**Image 1.**