



Datasheet for ABIN6741721
anti-ABCF2 antibody (AA 143-192)



[Go to Product page](#)

1 Image

Overview

Quantity:	100 µL
Target:	ABCF2
Binding Specificity:	AA 143-192
Reactivity:	Human, Guinea Pig, Xenopus laevis, Bat
Host:	Rabbit
Clonality:	Polyclonal
Conjugate:	This ABCF2 antibody is un-conjugated
Application:	Western Blotting (WB)

Product Details

Immunogen: Synthetic peptide located between aa143-192 of human ABCF2 (Q75MJ1, NP_005683). Percent identity by BLAST analysis: Human, Chimpanzee, Gorilla, Gibbon, Bat, Guinea pig, Xenopus, Stickleback (100%), Monkey, Marmoset, Mouse, Rat, Elephant, Panda, Dog, Bovine, Rabbit, Horse, Pig, Opossum, Turkey, Zebra finch, Chicken, Platypus, Zebrafish (92%), Seabass, Salmon (85%).

Type of Immunogen: Synthetic peptide

Isotype: IgG

Specificity: Human ABCF2

Predicted Reactivity: Percent identity by BLAST analysis: Human, Guinea pig, Xenopus (100%) Mouse, Rat, Dog, Bovine, Rabbit, Pig, Chicken, Zebrafish (92%).

Product Details

Purification: Immunoaffinity purified

Target Details

Target: ABCF2

Alternative Name: ABCF2 ([ABCF2 Products](#))

Background: Name/Gene ID: ABCF2
Subfamily: ATP-binding cassette - ABCF/GCN20
Family: Transporter

Synonyms: ABCF2, ABC-type transport protein, ABC28, EST133090, M-ABC1, HUSSY18, HUSSY-18

Gene ID: 10061

NCBI Accession: [NP_005683](#)

UniProt: [Q9UG63](#)

Application Details

Application Notes: Approved: WB (0.2 - 1 µg/mL)

Usage: Western Blot: Suggested dilution at 1.0 µg/mL in 5 % skim milk / PBS buffer, and HRP conjugated anti-Rabbit IgG should be diluted in 1: 50,000 - 100,000 as second antibody. ELISA titer in peptide based assay: 1:312500.

Comment: Target Species of Antibody: Human

Restrictions: For Research Use only

Handling

Format: Lyophilized

Reconstitution: Distilled water

Concentration: Lot specific

Buffer: Lyophilized from PBS with 2 % sucrose

Handling Advice: Avoid repeat freeze-thaw cycles.

Handling

Storage: 4 °C, -20 °C

Storage Comment: Long term: -20°C, the use of 50% glycerol is recommended if storing aliquots in -20°C for long term use (up to 1 year)
Short term (less than 1 week): 4°C. Avoid freeze-thaw cycles.

Images

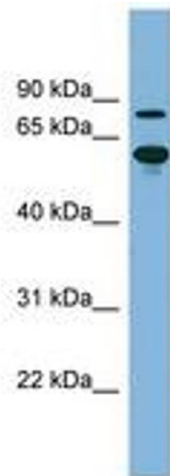


Image 1.