

Datasheet for ABIN6741727
anti-OXR1 antibody (AA 143-192)[Go to Product page](#)

1 Image

Overview

Quantity:	100 µL
Target:	OXR1
Binding Specificity:	AA 143-192
Reactivity:	Human, Mouse, Rat, Horse, Cow, Rabbit, Dog, Guinea Pig, Monkey, Bat, Chicken, Pig
Host:	Rabbit
Clonality:	Polyclonal
Conjugate:	This OXR1 antibody is un-conjugated
Application:	Western Blotting (WB)

Product Details

Immunogen:	Synthetic peptide located between aa143-192 of human OXR1 (Q8N573, NP_851999). Percent identity by BLAST analysis: Human, Chimpanzee, Gorilla, Gibbon, Monkey, Galago, Marmoset, Mouse, Rat, Elephant, Panda, Dog, Bat, Rabbit, Horse, Pig, Guinea pig, Turkey, Chicken (100%), Zebra finch, Platypus, Xenopus (92%), Bovine, Lizard (85%). Type of Immunogen: Synthetic peptide
Isotype:	IgG
Specificity:	Human OXR1
Predicted Reactivity:	Percent identity by BLAST analysis: Human, Mouse, Rat, Dog, Rabbit, Horse, Pig, Guinea pig, Chicken (100%) Xenopus (92%) Bovine (85%).
Purification:	Immunoaffinity purified

Target Details

Target:	OXR1
Alternative Name:	OXR1 (OXR1 Products)
Background:	Name/Gene ID: OXR1 Synonyms: OXR1, Nbla00307, Oxidation resistance protein 1, Oxidation resistance 1
Gene ID:	55074
NCBI Accession:	NP_851999
UniProt:	Q8N573

Application Details

Application Notes:	Approved: WB (0.2 - 1 µg/mL) Usage: Western Blot: Suggested dilution at 1 µg/mL in 5 % skim milk / PBS buffer, and HRP conjugated anti-Rabbit IgG should be diluted in 1: 50,000 - 100,000 as second antibody. ELISA titer in peptide based assay: 1:62500.
Comment:	Target Species of Antibody: Human
Restrictions:	For Research Use only

Handling

Format:	Lyophilized
Reconstitution:	Distilled water
Concentration:	Lot specific
Buffer:	Lyophilized from PBS with 2 % sucrose
Handling Advice:	Avoid repeat freeze-thaw cycles.
Storage:	4 °C, -20 °C
Storage Comment:	Long term: -20°C, the use of 50% glycerol is recommended if storing aliquots in -20°C for long term use (up to 1 year) Short term (less than 1 week): 4°C. Avoid freeze-thaw cycles.

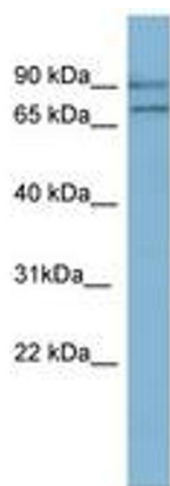


Image 1.