



[Go to Product page](#)

Datasheet for ABIN6741739  
**anti-CEACAM6 antibody (AA 35-84)**

1 Image

Overview

Quantity:	100 µL
Target:	CEACAM6
Binding Specificity:	AA 35-84
Reactivity:	Human
Host:	Rabbit
Clonality:	Polyclonal
Conjugate:	This CEACAM6 antibody is un-conjugated
Application:	Western Blotting (WB)

Product Details

Immunogen:	Synthetic peptide located between aa35-84 of human CEACAM6 (P40199, NP_002474). Percent identity by BLAST analysis: Human (100%), Gorilla, Gibbon (92%), Marmoset (85%), Monkey (84%).  Type of Immunogen: Synthetic peptide
Isotype:	IgG
Specificity:	Human CEACAM6
Predicted Reactivity:	Percent identity by BLAST analysis: Human (100%).
Purification:	Immunoaffinity purified

## Target Details

---

Target:	CEACAM6
Alternative Name:	CD66c / CEACAM6 ( <a href="#">CEACAM6 Products</a> )
Background:	Name/Gene ID: CEACAM6 Family: CEA  Synonyms: CEACAM6, CD66c, CD66c antigen, CEAL, NCA, Normal cross-reacting antigen
Gene ID:	4680
NCBI Accession:	<a href="#">NP_002474</a>
UniProt:	<a href="#">P40199</a>

## Application Details

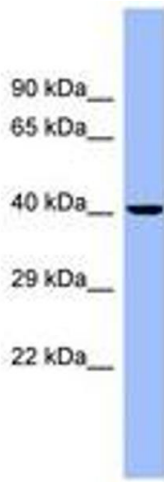
---

Application Notes:	Approved: WB (0.2 - 1 µg/mL)  Usage: Western Blot: Suggested dilution at 1 µg/mL in 5 % skim milk / PBS buffer, and HRP conjugated anti-Rabbit IgG should be diluted in 1: 50,000 - 100,000 as second antibody. ELISA titer in peptide based assay: 1:312500.
Comment:	Target Species of Antibody: Human
Restrictions:	For Research Use only

## Handling

---

Format:	Lyophilized
Reconstitution:	Distilled water
Concentration:	Lot specific
Buffer:	Lyophilized from PBS with 2 % sucrose
Handling Advice:	Avoid repeat freeze-thaw cycles.
Storage:	4 °C,-20 °C
Storage Comment:	Long term: -20°C, the use of 50% glycerol is recommended if storing aliquots in -20°C for long term use (up to 1 year) Short term (less than 1 week): 4°C. Avoid freeze-thaw cycles.



**Image 1.**