



[Go to Product page](#)

Datasheet for ABIN6741746
anti-CYP11B2 antibody (C-Term)

1 Image

Overview

Quantity:	100 µL
Target:	CYP11B2
Binding Specificity:	C-Term
Reactivity:	Human
Host:	Rabbit
Clonality:	Polyclonal
Conjugate:	This CYP11B2 antibody is un-conjugated
Application:	Western Blotting (WB)

Product Details

Immunogen:	Synthetic peptide from C-Terminus of human CYP11B2 (P19099, NP_000489). Percent identity by BLAST analysis: Human, Gorilla (100%), Monkey (92%), Gibbon (85%), Marmoset (84%). Type of Immunogen: Synthetic peptide
Isotype:	IgG
Specificity:	Human CYP11B2
Predicted Reactivity:	Percent identity by BLAST analysis:
Purification:	Immunoaffinity purified

Target Details

Target:	CYP11B2
---------	---------

Target Details

Alternative Name:	Aldosterone Synthase / CYP11B2 (CYP11B2 Products)
Background:	Name/Gene ID: CYP11B2 Family: Cytochrome P450 Synonyms: CYP11B2, ALDOS, Aldosterone synthase, CYP11BL, CYPXIB2, Cytochrome P-450Aldo, Cytochrome P-450C18, P-450C18, p450aldo, Steroid 18-hydroxylase, Steroid 11-beta-monooxygenase, CYP11B, p450C18, Steroid 11-beta/18-hydroxylase
Gene ID:	1585
NCBI Accession:	NP_000489
UniProt:	P19099
Pathways:	ACE Inhibitor Pathway , Metabolism of Steroid Hormones and Vitamin D , Steroid Hormone Biosynthesis , Regulation of Systemic Arterial Blood Pressure by Hormones , C21-Steroid Hormone Metabolic Process , Feeding Behaviour

Application Details

Application Notes:	Approved: WB (0.2 - 1 µg/mL) Usage: Western Blot: Suggested dilution at 1 µg/mL in 5 % skim milk / PBS buffer, and HRP conjugated anti-Rabbit IgG should be diluted in 1: 50,000 - 100,000 as second antibody. ELISA titer in peptide based assay: 1:1562500.
Comment:	Target Species of Antibody: Human
Restrictions:	For Research Use only

Handling

Format:	Lyophilized
Reconstitution:	Distilled water
Concentration:	Lot specific
Buffer:	Lyophilized from PBS with 2 % sucrose
Handling Advice:	Avoid repeat freeze-thaw cycles.
Storage:	4 °C, -20 °C

Handling

Storage Comment: Long term: -20°C, the use of 50% glycerol is recommended if storing aliquots in -20°C for long term use (up to 1 year)
Short term (less than 1 week): 4°C. Avoid freeze-thaw cycles.

Images

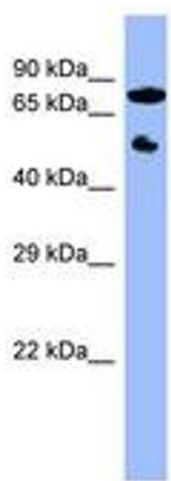


Image 1.