

Datasheet for ABIN6741751  
**anti-UGCG antibody (AA 35-84)**[Go to Product page](#)

## 1 Image

## Overview

Quantity:	100 µL
Target:	UGCG
Binding Specificity:	AA 35-84
Reactivity:	Human, Mouse, Rat, Cow, Pig, Rabbit, Dog, Guinea Pig, Horse, Zebrafish (Danio rerio), Bat, Chicken, Hamster, Monkey, Xenopus laevis
Host:	Rabbit
Clonality:	Polyclonal
Conjugate:	This UGCG antibody is un-conjugated
Application:	Western Blotting (WB)

## Product Details

Immunogen:	Synthetic peptide located between aa35-84 of human UGCG (Q16739, NP_003349). Percent identity by BLAST analysis: Human, Chimpanzee, Gorilla, Gibbon, Monkey, Galago, Marmoset, Mouse, Rat, Hamster, Elephant, Panda, Dog, Bovine, Bat, Rabbit, Horse, Pig, Guinea pig, Turkey, Zebra finch, Chicken, Lizard, Xenopus, Stickleback, Zebrafish (100%), Opossum, Drosophila (85%).  Type of Immunogen: Synthetic peptide
Isotype:	IgG
Specificity:	Human UGCG
Predicted Reactivity:	Percent identity by BLAST analysis: Dog, Bovine, Rabbit, Horse, Pig, Guinea pig, Chicken,

## Product Details

Zebrafish (100%).

Purification: Immunoaffinity purified

## Target Details

Target: UGCG

Alternative Name: GCS / UGCG ([UGCG Products](#))

Background: Name/Gene ID: UGCG

Synonyms: UGCG, Ceramide glucosyl transferase, GLCT1, Glucosylceramide synthase, GLCT-1, Ceramide glucosyltransferase, GCS

Gene ID: 7357

NCBI Accession: [NP\\_003349](#)

UniProt: [Q16739](#)

## Application Details

Application Notes: Approved: WB (0.2 - 1 µg/mL)

Usage: Western Blot: Suggested dilution at 1 µg/mL in 5 % skim milk / PBS buffer, and HRP conjugated anti-Rabbit IgG should be diluted in 1: 50,000 - 100,000 as second antibody. ELISA titer in peptide based assay: 1:1562500.

Comment: Target Species of Antibody: Human

Restrictions: For Research Use only

## Handling

Format: Lyophilized

Reconstitution: Distilled water

Concentration: Lot specific

Buffer: Lyophilized from PBS with 2 % sucrose

Handling Advice: Avoid repeat freeze-thaw cycles.

Storage: 4 °C, -20 °C

Handling

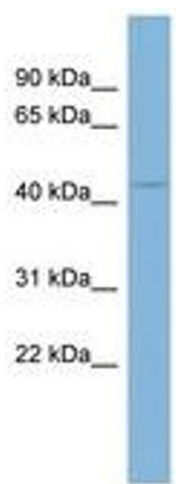
---

Storage Comment: Long term: -20°C, the use of 50% glycerol is recommended if storing aliquots in -20°C for long term use (up to 1 year)

Short term (less than 1 week): 4°C. Avoid freeze-thaw cycles.

Images

---



**Image 1.**