



[Go to Product page](#)

Datasheet for ABIN6741770

## anti-PTPN12 antibody (AA 323-372)

### 1 Image

#### Overview

|                      |   |
|----------------------|---|
| Quantity:            | 100 µL  |
| Target:              | PTPN12  |
| Binding Specificity: | AA 323-372                                    |
| Reactivity:          | Human, Mouse, Rat, Rabbit, Guinea Pig, Monkey |
| Host:                | Rabbit  |
| Clonality:           | Polyclonal                                    |
| Conjugate:           | This PTPN12 antibody is un-conjugated         |
| Application:         | Western Blotting (WB)                         |

#### Product Details

|                       |   |
|-----------------------|---|
| Immunogen:            | Synthetic peptide located between aa323-372 of human PTPN12 (Q05209, NP_002826).<br>Percent identity by BLAST analysis: Human, Chimpanzee, Gorilla, Orangutan, Gibbon, Marmoset, Mouse, Rat, Elephant, Rabbit, Guinea pig, Zebra finch, Platypus (100%), Panda, Dog, Bovine, Bat, Horse, Opossum, Chicken (92%), Turkey (86%), Xenopus (85%).<br><br>Type of Immunogen: Synthetic peptide |
| Isotype:              | IgG   |
| Specificity:          | Human PTPN12  |
| Predicted Reactivity: | Percent identity by BLAST analysis: Human, Rat, Rabbit, Guinea pig (100%) Dog, Bovine, Horse, Chicken (92%) Xenopus (85%).  |
| Purification:         | Immunoaffinity purified   |

## Target Details

---

|                   |  |
|-------------------|--|
| Target:           | PTPN12   |
| Alternative Name: | PTP-PEST / PTPN12 ( <a href="#">PTPN12 Products</a> )  |
| Background:       | Name/Gene ID: PTPN12<br>Subfamily: NT4<br>Family: Protein Phosphatase<br><br>Synonyms: PTPN12, Phosphatase pest, PTPG1, Ptp-g1, PTP-PEST |
| Gene ID:          | 5782   |
| NCBI Accession:   | <a href="#">NP_002826</a>  |
| UniProt:          | <a href="#">Q05209</a>   |

## Application Details

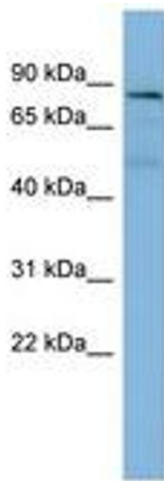
---

|                    |  |
|--------------------|--|
| Application Notes: | Approved: WB (0.2 - 1 µg/mL)<br><br>Usage: Western Blot: Suggested dilution at 1 µg/mL in 5 % skim milk / PBS buffer, and HRP conjugated anti-Rabbit IgG should be diluted in 1: 50,000 - 100,000 as second antibody. ELISA titer in peptide based assay: 1:1562500. |
| Comment:           | Target Species of Antibody: Human  |
| Restrictions:      | For Research Use only  |

## Handling

---

|                  |   |
|------------------|---|
| Format:          | Lyophilized   |
| Reconstitution:  | Distilled water   |
| Concentration:   | Lot specific  |
| Buffer:          | Lyophilized from PBS with 2 % sucrose   |
| Handling Advice: | Avoid repeat freeze-thaw cycles.  |
| Storage:         | 4 °C, -20 °C  |
| Storage Comment: | Long term: -20°C, the use of 50% glycerol is recommended if storing aliquots in -20°C for long term use (up to 1 year)<br>Short term (less than 1 week): 4°C. Avoid freeze-thaw cycles. |



**Image 1.**