



[Go to Product page](#)

Datasheet for ABIN6741774

## anti-PRKRIP1 antibody (N-Term)

### 1 Image

#### Overview

Quantity:	100 µL
Target:	PRKRIP1
Binding Specificity:	N-Term
Reactivity:	Human, Mouse, Pig, Rabbit, Cow, Rat, Dog, Horse, Monkey, Bat
Host:	Rabbit
Clonality:	Polyclonal
Conjugate:	This PRKRIP1 antibody is un-conjugated
Application:	Western Blotting (WB)

#### Product Details

Immunogen:	Synthetic peptide from N-Terminus of human PRKRIP1 (Q9H875, NP_078929). Percent identity by BLAST analysis: Human, Gorilla, Orangutan, Gibbon, Galago, Marmoset, Mouse, Rat, Elephant, Panda, Dog, Bovine, Bat, Rabbit, Horse, Pig (100%), Opossum (92%), Zebra finch, Chicken (90%), Guinea pig (85%).  Type of Immunogen: Synthetic peptide
Isotype:	IgG
Specificity:	Human PRKRIP1
Predicted Reactivity:	Percent identity by BLAST analysis: Mouse, Rat, Dog, Rabbit (100%).
Purification:	Immunoaffinity purified

## Target Details

---

Target:	PRKRIP1
Alternative Name:	PRKRIP1 ( <a href="#">PRKRIP1 Products</a> )
Background:	Name/Gene ID: PRKRIP1  Synonyms: PRKRIP1, C114, KRBOX3, PRKR-interacting protein 1, KRAB box domain containing 3
Gene ID:	79706
NCBI Accession:	<a href="#">NP_078929</a>
UniProt:	<a href="#">Q9H875</a>

## Application Details

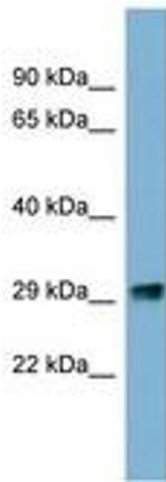
---

Application Notes:	Approved: WB (0.2 - 1 µg/mL)  Usage: Western Blot: Suggested dilution at 1 µg/mL in 5 % skim milk / PBS buffer, and HRP conjugated anti-Rabbit IgG should be diluted in 1: 50,000 - 100,000 as second antibody. ELISA titer in peptide based assay: 1:1562500.
Comment:	Target Species of Antibody: Human
Restrictions:	For Research Use only

## Handling

---

Format:	Lyophilized
Reconstitution:	Distilled water
Concentration:	Lot specific
Buffer:	Lyophilized from PBS with 2 % sucrose
Handling Advice:	Avoid repeat freeze-thaw cycles.
Storage:	4 °C,-20 °C
Storage Comment:	Long term: -20°C, the use of 50% glycerol is recommended if storing aliquots in -20°C for long term use (up to 1 year)  Short term (less than 1 week): 4°C. Avoid freeze-thaw cycles.



**Image 1.**