



[Go to Product page](#)

Datasheet for ABIN6741780

anti-ATP2A1/SERCA1 antibody (N-Term)

1 Image

Overview

Quantity:	100 µL
Target:	ATP2A1/SERCA1 (ATP2A1)
Binding Specificity:	N-Term
Reactivity:	Human, Rat, Mouse, Rabbit, Cow, Guinea Pig, Horse, Monkey, Zebrafish (Danio rerio), Bat, Pig
Host:	Rabbit
Clonality:	Polyclonal
Conjugate:	This ATP2A1/SERCA1 antibody is un-conjugated
Application:	Western Blotting (WB)

Product Details

Immunogen:	Synthetic peptide from N-Terminus of human ATP2A1 (Q7Z675, NP_004311). Percent identity by BLAST analysis: Human, Chimpanzee, Gorilla, Gibbon, Marmoset, Mouse, Rat, Elephant, Bovine, Bat, Rabbit, Pig, Guinea pig (100%), Panda, Dog (92%), Horse, Zebrafish (84%), Galago (83%). Type of Immunogen: Synthetic peptide
Isotype:	IgG
Specificity:	Human ATP2A1 / SERCA1
Predicted Reactivity:	Percent identity by BLAST analysis: Human, Rat, Pig (100%) Dog (92%) Horse (84%).
Purification:	Immunoaffinity purified

Target Details

Target:	ATP2A1/SERCA1 (ATP2A1)
Alternative Name:	ATP2A1 / SERCA1 (ATP2A1 Products)
Background:	Name/Gene ID: ATP2A1 Subfamily: ATPase - P type, type IIA Family: Transporter Synonyms: ATP2A1, SERCA1, ATP2A, Calcium pump 1, SR Ca(2+)-ATPase 1
Gene ID:	487
NCBI Accession:	NP_004311
UniProt:	O14983
Pathways:	Ribonucleoside Biosynthetic Process

Application Details

Application Notes:	Approved: WB (0.2 - 1 µg/mL) Usage: Western Blot: Suggested dilution at 1 µg/mL in 5 % skim milk / PBS buffer, and HRP conjugated anti-Rabbit IgG should be diluted in 1: 50,000 - 100,000 as second antibody. ELISA titer in peptide based assay: 1:62500.
Comment:	Target Species of Antibody: Human
Restrictions:	For Research Use only

Handling

Format:	Lyophilized
Reconstitution:	Distilled water
Concentration:	Lot specific
Buffer:	Lyophilized from PBS with 2 % sucrose
Handling Advice:	Avoid repeat freeze-thaw cycles.
Storage:	4 °C,-20 °C
Storage Comment:	Long term: -20°C, the use of 50% glycerol is recommended if storing aliquots in -20°C for long term use (up to 1 year)

Handling

Short term (less than 1 week): 4°C. Avoid freeze-thaw cycles.

Images

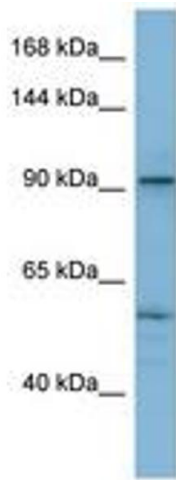


Image 1.