



Datasheet for ABIN6741790
anti-EFCAB4B antibody (AA 71-120)



[Go to Product page](#)

1 Image

Overview

Quantity:	100 µL
Target:	EFCAB4B
Binding Specificity:	AA 71-120
Reactivity:	Human, Rat, Horse, Rabbit, Cow, Dog, Guinea Pig
Host:	Rabbit
Clonality:	Polyclonal
Conjugate:	This EFCAB4B antibody is un-conjugated
Application:	Western Blotting (WB)

Product Details

Immunogen:	Synthetic peptide located between aa71-120 of human EFCAB4B (Q9BSW2, NP_116069). Percent identity by BLAST analysis: Human, Chimpanzee, Gorilla (100%), Gibbon, Monkey, Marmoset, Pig (92%), Xenopus (91%), Galago, Mouse, Elephant, Dog, Bat, Horse, Guinea pig (85%), Rat (78%). Type of Immunogen: Synthetic peptide
Isotype:	IgG
Specificity:	Human EFCAB4B
Predicted Reactivity:	Percent identity by BLAST analysis: Human (100%) Dog, Horse, Guinea pig (85%).
Purification:	Immunoaffinity purified

Target Details

Target: EFCAB4B

Alternative Name: EFCAB4B ([EFCAB4B Products](#))

Background: Name/Gene ID: CRACR2A

Synonyms: CRACR2A, CRAC channel regulator 2A, EFCAB4B

Gene ID: 84766

NCBI Accession: [NP_116069](#)

UniProt: [Q9BSW2](#)

Application Details

Application Notes: Approved: WB (0.2 - 1 µg/mL)

Usage: Western Blot: Suggested dilution at 1 µg/mL in 5 % skim milk / PBS buffer, and HRP conjugated anti-Rabbit IgG should be diluted in 1: 50,000 - 100,000 as second antibody. ELISA titer in peptide based assay: 1:312500.

Comment: Target Species of Antibody: Human

Restrictions: For Research Use only

Handling

Format: Lyophilized

Reconstitution: Distilled water

Concentration: Lot specific

Buffer: Lyophilized from PBS with 2 % sucrose

Handling Advice: Avoid repeat freeze-thaw cycles.

Storage: 4 °C, -20 °C

Storage Comment: Long term: -20°C, the use of 50% glycerol is recommended if storing aliquots in -20°C for long term use (up to 1 year)

Short term (less than 1 week): 4°C. Avoid freeze-thaw cycles.

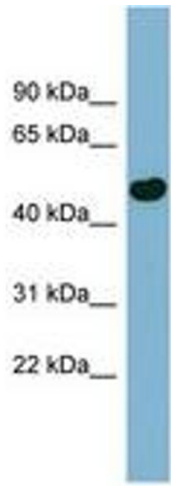


Image 1.