



Datasheet for ABIN6741791
anti-EFCAB4B antibody (AA 215-264)



[Go to Product page](#)

1 Image

Overview

| | |
|----------------------|--|
| Quantity: | 100 µL |
| Target: | EFCAB4B |
| Binding Specificity: | AA 215-264 |
| Reactivity: | Human, Horse |
| Host: | Rabbit |
| Clonality: | Polyclonal |
| Conjugate: | This EFCAB4B antibody is un-conjugated |
| Application: | Western Blotting (WB) |

Product Details

| | |
|-----------------------|--|
| Immunogen: | Synthetic peptide located between aa215-264 of human EFCAB4B (Q9BSW2, NP_116069). Percent identity by BLAST analysis: Human, Chimpanzee, Gorilla, Gibbon, Monkey, Galago, Elephant, Horse (100%), Marmoset, Mouse, Rat, Dog, Bovine, Bat, Rabbit, Pig, Opossum, Guinea pig, Zebra finch, Platypus, Xenopus (92%), Lizard (85%). Type of Immunogen: Synthetic peptide |
| Isotype: | IgG |
| Specificity: | Human EFCAB4B |
| Predicted Reactivity: | Percent identity by BLAST analysis: Human, Horse (100%) Rat, Dog, Bovine, Rabbit, Guinea pig (92%). |
| Purification: | Immunoaffinity purified |

Target Details

Target: EFCAB4B

Alternative Name: EFCAB4B ([EFCAB4B Products](#))

Background: Name/Gene ID: CRACR2A

Synonyms: CRACR2A, CRAC channel regulator 2A, EFCAB4B

Gene ID: 84766

NCBI Accession: [NP_116069](#)

UniProt: [Q9BSW2](#)

Application Details

Application Notes: Approved: WB (0.2 - 1 µg/mL)

Usage: Western Blot: Suggested dilution at 1 µg/mL in 5 % skim milk / PBS buffer, and HRP conjugated anti-Rabbit IgG should be diluted in 1: 50,000 - 100,000 as second antibody. ELISA titer in peptide based assay: 1:312500.

Comment: Target Species of Antibody: Human

Restrictions: For Research Use only

Handling

Format: Lyophilized

Reconstitution: Distilled water

Concentration: Lot specific

Buffer: Lyophilized from PBS with 2 % sucrose

Handling Advice: Avoid repeat freeze-thaw cycles.

Storage: 4 °C, -20 °C

Storage Comment: Long term: -20°C, the use of 50% glycerol is recommended if storing aliquots in -20°C for long term use (up to 1 year)

Short term (less than 1 week): 4°C. Avoid freeze-thaw cycles.

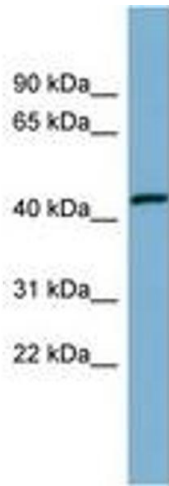


Image 1.