



[Go to Product page](#)

Datasheet for ABIN6741798

## anti-C17orf64 antibody (C-Term)

### 1 Image

#### Overview

Quantity:	100 µL
Target:	C17orf64
Binding Specificity:	C-Term
Reactivity:	Human, Dog, Horse, Bat
Host:	Rabbit
Clonality:	Polyclonal
Conjugate:	This C17orf64 antibody is un-conjugated
Application:	Western Blotting (WB)

#### Product Details

Immunogen:	Synthetic peptide from C-Terminus of human C17orf64 (Q86WR6, NP_859058). Percent identity by BLAST analysis: Human, Bat, Horse (100%), Gibbon, Pig (92%), Rabbit (91%), Monkey (85%), Galago, Dog, Bovine (84%).  Type of Immunogen: Synthetic peptide
Isotype:	IgG
Specificity:	Human C17orf64
Predicted Reactivity:	Percent identity by BLAST analysis: Pig (92%) Rabbit (91%) Dog (84%).
Purification:	Immunoaffinity purified

## Target Details

---

Target:	C17orf64
Alternative Name:	C17orf64 ( <a href="#">C17orf64 Products</a> )
Background:	Name/Gene ID: C17orf64  Synonyms: C17orf64
Gene ID:	124773
NCBI Accession:	<a href="#">NP_859058</a>
UniProt:	<a href="#">Q86WR6</a>

## Application Details

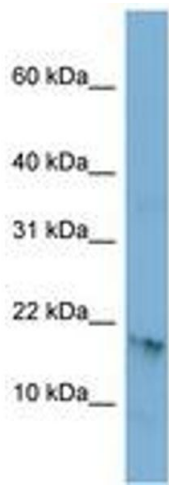
---

Application Notes:	Approved: WB (0.2 - 1 µg/mL)  Usage: Western Blot: Suggested dilution at 1 µg/mL in 5 % skim milk / PBS buffer, and HRP conjugated anti-Rabbit IgG should be diluted in 1: 50,000 - 100,000 as second antibody. ELISA titer in peptide based assay: 1:1562500.
Comment:	Target Species of Antibody: Human
Restrictions:	For Research Use only

## Handling

---

Format:	Lyophilized
Reconstitution:	Distilled water
Concentration:	Lot specific
Buffer:	Lyophilized from PBS with 2 % sucrose
Handling Advice:	Avoid repeat freeze-thaw cycles.
Storage:	4 °C, -20 °C
Storage Comment:	Long term: -20°C, the use of 50% glycerol is recommended if storing aliquots in -20°C for long term use (up to 1 year)  Short term (less than 1 week): 4°C. Avoid freeze-thaw cycles.



**Image 1.**