

Datasheet for ABIN6741803  
**anti-MYBPH antibody (AA 107-156)**[Go to Product page](#)

## 1 Image

## Overview

Quantity:	100 µL
Target:	MYBPH
Binding Specificity:	AA 107-156
Reactivity:	Human, Mouse, Rat, Rabbit, Cow, Dog, Guinea Pig, Pig, Monkey
Host:	Rabbit
Clonality:	Polyclonal
Conjugate:	This MYBPH antibody is un-conjugated
Application:	Western Blotting (WB)

## Product Details

Immunogen:	Synthetic peptide located between aa107-156 of human MYBPH (Q13203, NP_004988). Percent identity by BLAST analysis: Human, Gorilla, Monkey, Galago, Marmoset, Mouse, Rat, Dog, Rabbit, Pig (100%), Gibbon, Elephant, Horse (92%), Bovine, Bat, Guinea pig (85%).  Type of Immunogen: Synthetic peptide
Isotype:	IgG
Specificity:	Human MYBPH
Predicted Reactivity:	Percent identity by BLAST analysis: Human, Mouse, Rat, Dog, Rabbit, Pig (100%) Horse (92%) Bovine, Guinea pig (85%).
Purification:	Immunoaffinity purified

## Target Details

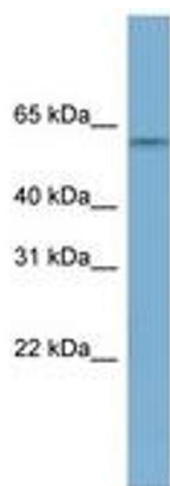
Target:	MYBPH
Alternative Name:	MYBPH ( <a href="#">MYBPH Products</a> )
Background:	Name/Gene ID: MYBPH  Synonyms: MYBPH, H-protein, Myosin binding protein H, Myosin-binding protein H, MyBP-H
Gene ID:	4608
NCBI Accession:	<a href="#">NP_004988</a>
UniProt:	<a href="#">Q13203</a>

## Application Details

Application Notes:	Approved: WB (0.2 - 1 µg/mL)  Usage: Western Blot: Suggested dilution at 1 µg/mL in 5 % skim milk / PBS buffer, and HRP conjugated anti-Rabbit IgG should be diluted in 1: 50,000 - 100,000 as second antibody. ELISA titer in peptide based assay: 1:62500.
Comment:	Target Species of Antibody: Human
Restrictions:	For Research Use only

## Handling

Format:	Lyophilized
Reconstitution:	Distilled water
Concentration:	Lot specific
Buffer:	Lyophilized from PBS with 2 % sucrose
Handling Advice:	Avoid repeat freeze-thaw cycles.
Storage:	4 °C, -20 °C
Storage Comment:	Long term: -20°C, the use of 50% glycerol is recommended if storing aliquots in -20°C for long term use (up to 1 year)  Short term (less than 1 week): 4°C. Avoid freeze-thaw cycles.



**Image 1.**