

Datasheet for ABIN6741810
anti-PHYH antibody (AA 251-300)[Go to Product page](#)

1 Image

Overview

Quantity:	100 µL
Target:	PHYH
Binding Specificity:	AA 251-300
Reactivity:	Human, Rat, Pig
Host:	Rabbit
Clonality:	Polyclonal
Conjugate:	This PHYH antibody is un-conjugated
Application:	Western Blotting (WB)

Product Details

Immunogen:	Synthetic peptide located between aa251-300 of human PHYH (O14832, NP_006205). Percent identity by BLAST analysis: Human, Chimpanzee, Gorilla, Orangutan, Gibbon, Baboon, Monkey, Galago, Rat (100%), Marmoset, Mouse, Hamster, Bat, Horse, Opossum (92%), Dog, Bovine, Rabbit, Pig, Guinea pig, Xenopus, Salmon (85%), Elephant (84%). Type of Immunogen: Synthetic peptide
Isotype:	IgG
Specificity:	Human PHYH
Predicted Reactivity:	Percent identity by BLAST analysis: Human (100%) Mouse (92%) Pig, Xenopus (85%).
Purification:	Immunoaffinity purified

Target Details

Target:	PHYH
Alternative Name:	RD / PHYH (PHYH Products)
Background:	Name/Gene ID: PHYH Synonyms: PHYH, LN1, LNAP1, PHYH1, Phytanoyl-CoA 2-hydroxylase, Phytanoyl-CoA hydroxylase, RD, PAHX, Phytanic acid oxidase
Gene ID:	5264
NCBI Accession:	NP_006205
UniProt:	O14832
Pathways:	Monocarboxylic Acid Catabolic Process

Application Details

Application Notes:	Approved: WB (0.2 - 1 µg/mL) Usage: Western Blot: Suggested dilution at 1 µg/mL in 5 % skim milk / PBS buffer, and HRP conjugated anti-Rabbit IgG should be diluted in 1: 50,000 - 100,000 as second antibody. ELISA titer in peptide based assay: 1:312500.
Comment:	Target Species of Antibody: Human
Restrictions:	For Research Use only

Handling

Format:	Lyophilized
Reconstitution:	Distilled water
Concentration:	Lot specific
Buffer:	Lyophilized from PBS with 2 % sucrose
Handling Advice:	Avoid repeat freeze-thaw cycles.
Storage:	4 °C, -20 °C
Storage Comment:	Long term: -20°C, the use of 50% glycerol is recommended if storing aliquots in -20°C for long term use (up to 1 year) Short term (less than 1 week): 4°C. Avoid freeze-thaw cycles.

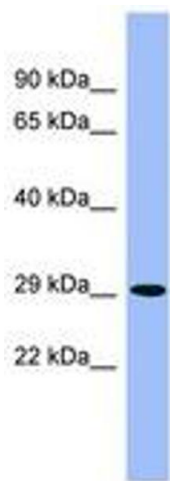


Image 1.