



[Go to Product page](#)

Datasheet for ABIN6741824
anti-NRIP3 antibody (C-Term)

1 Image

Overview

Quantity:	100 µL
Target:	NRIP3
Binding Specificity:	C-Term
Reactivity:	Human, Mouse, Rat, Horse, Dog, Bat, Monkey
Host:	Rabbit
Clonality:	Polyclonal
Conjugate:	This NRIP3 antibody is un-conjugated
Application:	Western Blotting (WB)

Product Details

Immunogen:	Synthetic peptide from C-Terminus of human NRIP3 (Q9NQ35, NP_065696). Percent identity by BLAST analysis: Human, Chimpanzee, Gorilla, Orangutan, Gibbon, Monkey, Galago, Marmoset, Mouse, Rat, Elephant, Dog, Bat, Horse (100%), Bovine, Rabbit, Guinea pig (92%), Platypus (90%), Opossum (85%). Type of Immunogen: Synthetic peptide
Isotype:	IgG
Specificity:	Human NRIP3
Predicted Reactivity:	Percent identity by BLAST analysis: Human, Mouse, Rat, Dog (100%) Horse (93%) Bovine, Rabbit, Guinea pig (92%).
Purification:	Immunoaffinity purified

Target Details

Target: NRIP3

Alternative Name: NRIP3 ([NRIP3 Products](#))

Background: Name/Gene ID: NRIP3

Synonyms: NRIP3, C11orf14, Sarcoma antigen NY-SAR-105, NY-SAR-105

Gene ID: 56675

NCBI Accession: [NP_065696](#)

UniProt: [Q9NQ35](#)

Application Details

Application Notes: Approved: WB (0.2 - 1 µg/mL)

Usage: Western Blot: Suggested dilution at 1 µg/mL in 5 % skim milk / PBS buffer, and HRP conjugated anti-Rabbit IgG should be diluted in 1: 50,000 - 100,000 as second antibody. ELISA titer in peptide based assay: 1:1562500.

Comment: Target Species of Antibody: Human

Restrictions: For Research Use only

Handling

Format: Lyophilized

Reconstitution: Distilled water

Concentration: Lot specific

Buffer: Lyophilized from PBS with 2 % sucrose

Handling Advice: Avoid repeat freeze-thaw cycles.

Storage: 4 °C, -20 °C

Storage Comment: Long term: -20°C, the use of 50% glycerol is recommended if storing aliquots in -20°C for long term use (up to 1 year)

Short term (less than 1 week): 4°C. Avoid freeze-thaw cycles.

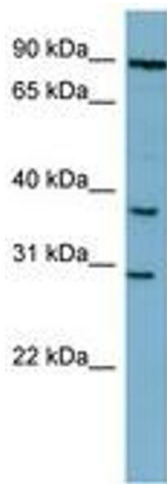


Image 1.